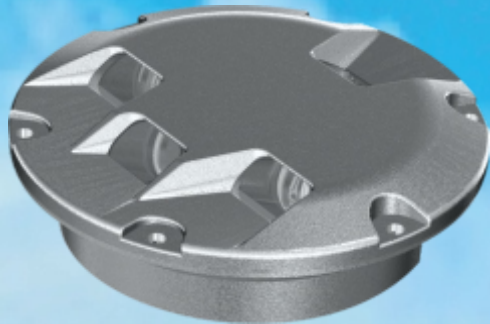


HALOGEN INSET LIGHTS

- simple and robust design with strong focus to power efficiency
- easy and quick maintenance, low life cycle servicing costs
- easily replaceable non-glued prisms

TI40/41 (8")

- TI40 series
 - low protrusion **9,35 mm**
 - optimized for low power consumption
- TI41 series
 - very low protrusion **6,35 mm**
 - optimized for easy snow removal operations
- RCL - runway centre line lights
- TDZ - touchdown zone lights (with or without toe-in)
- RETIL - rapid exit TWY indicator lights
- THL - Take-off and hold lights (RWSL, only TI40)
- common optical parts with TI70 series



TI70 (12")

- standard protrusion **12,5 mm**
- APP - approach centre line and crossbar lights
- ASR - approach side row lights
- THR - threshold and threshold wingbar lights
- RWE - runway end lights
- THR/RWE - threshold/runway end lights
- RGH - high intensity RGL lights (Configuration B)
- common optical parts with TI40/41 series

TI42 (8")

- extremely low protrusion **3,5 mm**
- high power efficiency (30W for taxiway edge lights)
- FATO - final approach and take-off area lights
- TLOF - touchdown and lift-off area lights
- TWY - taxiway edge lights
- AGL - aircraft stand manoeuvring guidance lights
- TCL - omnidirectional taxiway centre line lights
- SBL - stop/no-entry bar lights (RVR ≥ 350 m)
- REM, MTE - omnidirectional low/medium intensity runway edge and threshold/runway end lights



TWY centre line lights (8")

- very low protrusion **6,35 mm**
- high power efficiency due to **20 W / 2,2 A** lamps *
- low secondary cable power losses due to **2,2 A** system *
- standard **6,6 A / 2,2 A** isolating transformers *
- required CCR power almost equal to that required by LED lights
- TCLS/C - taxiway centre line, wide/curved (RVR < 350 m)
- EREX - enhanced rapid exit taxiway centre line
- REL - runway entrance lights (RWSL)
- RGL - low intensity RGL lights (Configuration B)
 - * 20 W / 2,2 A lamps not used in stop/no-entry bar, enhanced rapid exit taxiway centre line and runway entrance lights
 - * 6,6 A lamps also available (on demand)