

Distanzbolzen

Messing vernickelt
mit Innengewinde
M2 - M5

Entretoises hexagonales

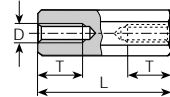
laiton nickelé
avec filet femelle
M2 - M5

Spacers

nickel-plated brass
with internal thread
M2 - M5

Bestellbeispiel:
Exemple de commande:
Example of order:

M20005.00.65
(M2 x 5 x 4 MS ni)



D mm	L mm	SW mm	Stand.-Packg.	Artikel-Nr. Numéro d'article Part-No.	D mm	L mm	SW mm	T mm	Stand.-Packg.	Artikel-Nr. Numéro d'article Part-No.
M2	4	4	500	M20004.00.65	M2	25	4	10	200	M20025.00.65
	5	4	500	M20005.00.65		30	4	10	200	M20030.00.65
	6	4	200	M20006.00.65		35	4	10	100	M20035.00.65
	7	4	200	M20007.00.65		40	4	10	100	M20040.00.65
	8	4	200	M20008.00.65		45	4	10	100	M20045.00.65
	10	4	200	M20010.00.65	M2.5	25	5	10	200	M25025.00.65
	12	4	200	M20012.00.65		30	5	10	200	M25030.00.65
	15	4	200	M20015.00.65		35	5	10	100	M25035.00.65
	18	4	200	M20018.00.65		40	5	10	100	M25040.00.65
	20	4	200	M20020.00.65		45	5	10	100	M25045.00.65
M2.5	5	5	500	M25005.00.65	M3	25	5	10	200	M30025.00.65
	8	5	200	M25008.00.65		27	5	10	200	M30027.00.65
	10	5	200	M25010.00.65		30	5	10	200	M30030.00.65
	12	5	200	M25012.00.65		33	5	10	200	M30033.00.65
	15	5	200	M25015.00.65		35	5	10	100	M30035.00.65
	18	5	200	M25018.00.65		37	5	10	100	M30037.00.65
	20	5	200	M25020.00.65		38	5	10	100	M30038.00.65
						40	5	10	100	M30040.00.65
						45	5	10	100	M30045.00.65
						50	5	10	100	M30050.00.65
M3	5	5	500	M30005.00.65	M4	25	7	10	200	M40025.00.65
	6	5	500	M30006.00.65		30	7	10	200	M40030.00.65
	7	5	500	M30007.00.65		35	7	10	100	M40035.00.65
	8	5	200	M30008.00.65		40	7	10	100	M40040.00.65
	9	5	200	M30009.00.65		45	7	10	100	M40045.00.65
	10	5	200	M30010.00.65		50	7	10	50	M40050.00.65
	11	5	200	M30011.00.65		55	7	10	50	M40055.00.65
	12	5	200	M30012.00.65		58	7	10	50	M40058.00.65
	13	5	200	M30013.00.65		60	7	10	50	M40060.00.65
	14	5	200	M30014.00.65		70	7	10	50	M40070.00.65
	15	5	200	M30015.00.65		80	7	10	50	M40080.00.65
	16	5	200	M30016.00.65		M5	25	8	10	100
18	5	200	M30018.00.65	30	8		10	50	M50030.00.65	
20	5	200	M30020.00.65	35	8		10	50	M50035.00.65	
				40	8		10	50	M50040.00.65	
				45	8		10	50	M50045.00.65	
				50	8		10	50	M50050.00.65	
				55	8		10	50	M50055.00.65	
				60	8		10	50	M50060.00.65	
				70	8		10	50	M50070.00.65	
				80	8		10	20	M50080.00.65	
M4	10	7	200	M40010.00.65	90	8	10	20	M50090.00.65	
	12	7	200	M40012.00.65	100	8	10	20	M50100.00.65	
	13	7	200	M40013.00.65						
	14	7	200	M40014.00.65						
	15	7	200	M40015.00.65						
	16	7	200	M40016.00.65						
M5	8	8	100	M50008.00.65						
	10	8	100	M50010.00.65						
	12	8	100	M50012.00.65						
	15	8	100	M50015.00.65						
	20	8	100	M50020.00.65						

Andere Abmessungen auf Anfrage

Autres dimensions sur demande

Further dimensions on request

Distanzbolzen

Messing vernickelt
mit Innen- und Aussengewinde
M2 - M5

Entretoises hexagonales

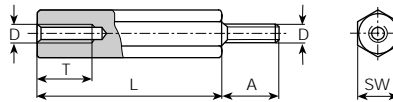
laiton nickelé
avec filet femelle et mâle
M2 - M5

Spacers

nickel-plated brass
with internal and external thread
M2 - M5

Bestellbeispiel:
Exemple de commande:
Example of order:

M20005.01.65
(M2 x 5 x 4 x 2.5 x 6 MS ni))



D mm	L mm	SW mm	T mm	A mm	Stand.-Packg.	Artikel-Nr. Numéro d'article Part-No.	D mm	L mm	SW mm	T mm	A mm	Stand.-Packg.	Artikel-Nr. Numéro d'article Part-No.	
M2	5	4	2.5	6	500	M20005.01.65	M4	10	7	5	8	100	M40010.01.65	
	8	4	5	6	500	M20008.01.65		12	7	8	8	100	M40012.01.65	
	10	4	5	6	200	M20010.01.65		14	7	10	8	100	M40014.01.65	
	12	4	6	6	200	M20012.01.65		15	7	10	8	100	M40015.01.65	
	15	4	6	6	200	M20015.01.65		16	7	10	8	100	M40016.01.65	
	18	4	6	6	200	M20018.01.65		18	7	10	8	100	M40018.01.65	
	20	4	6	6	200	M20020.01.65		20	7	10	8	100	M40020.01.65	
	25	4	6	6	100	M20025.01.65		25	7	10	10	100	M40025.01.65	
	30	4	6	6	100	M20030.01.65		30	7	10	10	100	M40030.01.65	
	35	4	6	6	100	M20035.01.65		35	7	10	10	100	M40035.01.65	
	40	4	6	6	100	M20040.01.65		40	7	10	10	100	M40040.01.65	
									45	7	10	10	50	M40045.01.65
	M2.5	5	5	3	6	500		M25005.01.65	50	7	10	10	50	M40050.01.65
8		5	5	6	500	M25008.01.65	55	7	10	10	50	M40055.01.65		
10		5	5	6	200	M25010.01.65	60	7	10	10	50	M40060.01.65		
12		5	6	6	200	M25012.01.65	70	7	10	10	50	M40070.01.65		
15		5	6	6	200	M25015.01.65	80	7	10	10	50	M40080.01.65		
18		5	6	6	200	M25018.01.65	100	7	10	10	50	M40100.01.65		
20		5	6	6	200	M25020.01.65	M5	15	8	10	8	100	M50015.01.65	
25		5	6	6	100	M25025.01.65		16	8	10	8	50	M50016.01.65	
30		5	6	6	100	M25030.01.65		18	8	10	8	50	M50018.01.65	
35		5	6	6	100	M25035.01.65		20	8	10	8	50	M50020.01.65	
40		5	6	6	100	M25040.01.65		25	8	10	10	50	M50025.01.65	
M3	5	5	3	5	500	M30005.01.65		30	8	10	10	50	M50030.01.65	
	8	5	5	6	500	M30008.01.65		35	8	10	10	50	M50035.01.65	
	10	5	6	8	200	M30010.01.65		40	8	10	10	50	M50040.01.65	
	11	5	6	8	200	M30011.01.65		45	8	10	10	50	M50045.01.65	
	12	5	8	8	200	M30012.01.65		50	8	10	10	50	M50050.01.65	
	14	5	8	8	200	M30014.01.65		55	8	10	10	50	M50055.01.65	
	15	5	8	8	200	M30015.01.65	60	8	10	10	50	M50060.01.65		
	16	5	8	8	200	M30016.01.65	70	8	10	10	50	M50070.01.65		
	17	5	8	8	200	M30017.01.65	80	8	10	10	20	M50080.01.65		
	18	5	8	8	200	M30018.01.65	90	8	10	10	20	M50090.01.65		
	20	5	8	8	200	M30020.01.65	100	8	10	10	20	M50100.01.65		
	22	5	10	8	200	M30022.01.65								
	25	5	10	10	100	M30025.01.65								
	30	5	10	10	100	M30030.01.65								
	32	5	10	6	100	M30032.01.65								
	35	5	10	10	100	M30035.01.65								
	40	5	10	10	100	M30040.01.65								
	45	5	10	10	100	M30045.01.65								
	50	5	10	10	100	M30050.01.65								
	100	5	10	10	50	M30100.01.65								

Andere Abmessungen auf Anfrage

Autres dimensions sur demande

Further dimensions on request

Distanzbolzen

Messing vernickelt
mit Innengewinde
M3 (EU)

Entretoises hexagonales

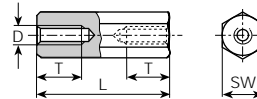
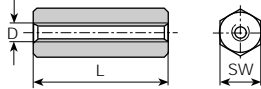
laiton nickélé
avec filet femelle
M3 (EU)

Spacers

nickel-plated brass
with internal thread
M3 (EU)

Bestellbeispiel:
Exemple de commande:
Example of order:

M30005.50.65
(M3 x 5 x 5.5 MS ni)



D mm	L mm	SW mm	Stand.-Packg.	Artikel-Nr. Numéro d'article Part-No.	D mm	L mm	SW mm	T mm	Stand.-Packg.	Artikel-Nr. Numéro d'article Part-No.
M3	5	5.5	500	M30005.50.65	M3	25	5.5	10	200	M30025.50.65
	6	5.5	500	M30006.50.65		30	5.5	10	200	M30030.50.65
	7	5.5	500	M30007.50.65		35	5.5	10	100	M30035.50.65
	8	5.5	200	M30008.50.65		40	5.5	10	100	M30040.50.65
	10	5.5	200	M30010.50.65		45	5.5	10	100	M30045.50.65
	11	5.5	200	M30011.50.65		50	5.5	10	100	M30050.50.65
	12	5.5	200	M30012.50.65		55	5.5	10	100	M30055.50.65
	13	5.5	200	M30013.50.65		60	5.5	10	100	M30060.50.65
	14	5.5	200	M30014.50.65						
	15	5.5	200	M30015.50.65						
	18	5.5	200	M30018.50.65						
20	5.5	200	M30020.50.65							

Distanzbolzen

Messing vernickelt
mit Innen- und Aussengewinde
M3 (EU)

Entretoises hexagonales

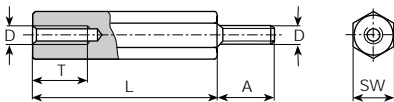
laiton nickélé
avec filet femelle et mâle
M3 (EU)

Spacers

nickel-plated brass
with internal and external thread
M3 (EU)

Bestellbeispiel:
Exemple de commande:
Example of order:

M30005.51.65
(M3 x 5 x 5.5 x 3 x 8 MS ni)



D mm	L mm	SW mm	T mm	A mm	Stand.-Packg.	Artikel-Nr. Numéro d'article Part-No.
M3	5	5.5	3	8	500	M30005.51.65
	8	5.5	5	8	500	M30008.51.65
	10	5.5	6	8	200	M30010.51.65
	11	5.5	6	8	200	M30011.51.65
	12	5.5	8	8	200	M30012.51.65
	14	5.5	8	8	200	M30014.51.65
	15	5.5	8	8	200	M30015.51.65
	18	5.5	8	8	200	M30018.51.65
	20	5.5	8	8	200	M30020.51.65
	25	5.5	10	10	100	M30025.51.65
	30	5.5	10	10	100	M30030.51.65
	35	5.5	10	10	100	M30035.51.65
	40	5.5	10	10	100	M30040.51.65
	45	5.5	10	10	100	M30045.51.65
	50	5.5	10	10	100	M30050.51.65

Andere Abmessungen auf Anfrage

Autres dimensions sur demande

Further dimensions on request

Distanzbolzen

Stahl verzinkt
mit Innen- und Aussengewinde
M6 (EU)

Entretoises hexagonales

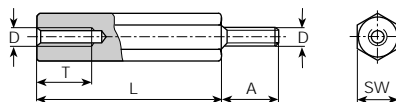
acier zingué
avec filet femelle et mâle
M6 (EU)

Spacers

zinc-plated steel
with internal and external thread
M6 (EU)

Bestellbeispiel:
Exemple de commande:
Example of order:

M60010.51.99
(M6 x 10 x 10x 5 x 10 ST zn)



D mm	L mm	SW mm	T mm	A mm	Stand.-Packg.	Artikel-Nr. Numéro d'article Part-No.	D mm	L mm	SW mm	T mm	A mm	Stand.-Packg.	Artikel-Nr. Numéro d'article Part-No.
M6	10	10	5	10	100	M60010.51.99	M6	70	10	10	10	50	M60070.51.99
	15	10	10	10	100	M60015.51.99		75	10	10	10	50	M60075.51.99
	20	10	10	10	100	M60020.51.99		80	10	10	10	50	M60080.51.99
	25	10	10	10	100	M60025.51.99		85	10	10	10	50	M60085.51.99
	30	10	10	10	50	M60030.51.99		90	10	10	10	50	M60090.51.99
	35	10	10	10	50	M60035.51.99		95	10	10	10	50	M60095.51.99
	40	10	10	10	50	M60040.51.99		100	10	10	10	20	M60100.51.99
	45	10	10	10	50	M60045.51.99		110	10	10	10	20	M60110.51.99
	48	10	10	10	50	M60048.51.99		120	10	10	10	20	M60120.51.99
	50	10	10	10	50	M60050.51.99		130	10	10	10	20	M60130.51.99
	55	10	10	10	50	M60055.51.99		140	10	10	10	20	M60140.51.99
	60	10	10	10	50	M60060.51.99		150	10	10	10	20	M60150.51.99
65	10	10	10	10	50	M60065.51.99	160	10	10	10	20	M60160.51.99	

Andere Abmessungen auf Anfrage

Autres dimensions sur demande

Further dimensions on request

Distanzbolzen

Stahl verzinkt
mit Innen- und Aussengewinde
M6

Entretoises hexagonales

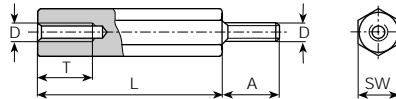
acier zingué
avec filet femelle et mâle
M6

Spacers

zinc-plated steel
with internal and external thread
M6

Bestellbeispiel:
Exemple de commande:
Example of order:

M60015.01.99
(M6 x 15 x 9 x 10 x 10 ST zn)



D mm	L mm	SW mm	T mm	A mm	Stand.-Packg.	Artikel-Nr. Numéro d'article Part-No.	D mm	L mm	SW mm	T mm	A mm	Stand.-Packg.	Artikel-Nr. Numéro d'article Part-No.
M6	10	9	5	10	100	M60010.01.99	M6	70	9	10	10	50	M60070.01.99
	15	9	10	10	100	M60015.01.99		75	9	10	10	50	M60075.01.99
	20	9	10	10	100	M60020.01.99		80	9	10	10	50	M60080.01.99
	25	9	10	10	100	M60025.01.99		85	9	10	10	50	M60085.01.99
	30	9	10	10	50	M60030.01.99		90	9	10	10	50	M60090.01.99
	35	9	10	10	50	M60035.01.99		95	9	10	10	50	M60095.01.99
	40	9	10	10	50	M60040.01.99		100	9	10	10	20	M60100.01.99
	45	9	10	10	50	M60045.01.99		110	9	10	10	20	M60110.01.99
	48	9	10	10	50	M60048.01.99		120	9	10	10	20	M60120.01.99
	50	9	10	10	50	M60050.01.99		130	9	10	10	20	M60130.01.99
	55	9	10	10	50	M60055.01.99		140	9	10	10	20	M60140.01.99
	60	9	10	10	50	M60060.01.99		150	9	10	10	20	M60150.01.99
	65	9	10	10	50	M60065.01.99		160	9	10	10	20	M60160.01.99

Distanzbolzen

Stahl verzinkt
mit Innengewinde
M6

Entretoises hexagonales

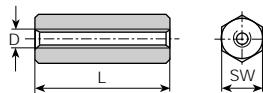
acier zingué
avec filet femelle
M6

Spacers

zinc-plated steel
with internal thread
M6

Bestellbeispiel:
Exemple de commande:
Example of order:

M60015.00.99
(M6 x 15 x 9 ST zn)



D mm	L mm	SW mm	Stand.-Packg.	Artikel-Nr. Numéro d'article Part-No.
M6	15	9	100	M60015.00.99
	20	9	100	M60020.00.99
	25	9	100	M60025.00.99

Mit Innen- und Aussengewinde Distanzbolzen kombinierbar.
Andere Abmessungen auf Anfrage

Autres longueurs possibles combinées avec les positions ci-dessus à filet mâle.
Autres dimensions sur demande

Other lengths are possible in combination with the above outside thread-positions.
Further dimensions on request

Isolier-Distanzbolzen

Polyamid, mit Innengewinde
M2.5 - M4

Werkstoff:

PA = Polyamid, schwarz (Nylon)

Temperaturbeständigkeit:

- 40°C bis +110°C

Bestellbeispiel:

Exemple de commande:

Example of order:

M25006.00.PA
(M2.5 x 6 x 5 x 3 PA)

Entretoises hexagonales isolantes

polyamide, avec filet femelle
M2.5 - M4

Matière:

PA = polyamide, noire (nylon)

Résistant à une température de:

- 40°C à +110°C

Insulating spacers

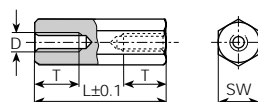
polyamid, with internal thread
M2.5 - M4

Material:

PA = polyamid, black (nylon)

Temperature range:

- 40°C up to +110°C



D mm	L mm	SW mm	T mm	Stand.-Packg.	Artikel-Nr. Numéro d'article Part-No.	D mm	L mm	SW mm	T mm	Stand.-Packg.	Artikel-Nr. Numéro d'article Part-No.		
M2.5	6	5	3	500	M25006.00.PA	M3	31	6	10	100	M30031.00.PA		
	7	5	3.5	500	M25007.00.PA		32	6	10	100	M30032.00.PA		
	8	5	4	200	M25008.00.PA		33	6	10	100	M30033.00.PA		
	9	5	4.5	200	M25009.00.PA		34	6	10	100	M30034.00.PA		
	10	5	5	200	M25010.00.PA		35	6	10	100	M30035.00.PA		
	11	5	5.5	200	M25011.00.PA		36	6	10	100	M30036.00.PA		
	12	5	6	200	M25012.00.PA		37	6	10	100	M30037.00.PA		
	13	5	6.5	200	M25013.00.PA		38	6	10	100	M30038.00.PA		
	14	5	7	200	M25014.00.PA		40	6	10	100	M30040.00.PA		
	15	5	7.5	100	M25015.00.PA		42	6	10	100	M30042.00.PA		
	16	5	8	100	M25016.00.PA		44	6	10	100	M30044.00.PA		
	17	5	8.5	100	M25017.00.PA		46	6	10	100	M30046.00.PA		
	18	5	9	100	M25018.00.PA		48	6	10	100	M30048.00.PA		
	19	5	9.5	100	M25019.00.PA		50	6	10	100	M30050.00.PA		
	20	5	10	100	M25020.00.PA		55	6	10	100	M30055.00.PA		
	21	5	10	100	M25021.00.PA		60	6	10	100	M30060.00.PA		
	22	5	10	100	M25022.00.PA		65	6	10	100	M30065.00.PA		
	23	5	10	100	M25023.00.PA		M4	10	8	5	200	M40010.00.PA	
	24	5	10	100	M25024.00.PA			11	8	5.5	200	M40011.00.PA	
	25	5	10	100	M25025.00.PA			12	8	6	200	M40012.00.PA	
	26	5	10	100	M25026.00.PA			13	8	6.5	200	M40013.00.PA	
	28	5	10	100	M25028.00.PA			14	8	7	100	M40014.00.PA	
	30	5	10	100	M25030.00.PA			15	8	7.5	100	M40015.00.PA	
	32	5	10	100	M25032.00.PA			16	8	8	100	M40016.00.PA	
	35	5	10	100	M25035.00.PA			17	8	8.5	100	M40017.00.PA	
	M3	6	6	3	500			M30006.00.PA	18	8	9	100	M40018.00.PA
		7	6	3.5	500			M30007.00.PA	19	8	9.5	100	M40019.00.PA
		8	6	4	200			M30008.00.PA	20	8	10	100	M40020.00.PA
		9	6	4.5	200			M30009.00.PA	21	8	10	100	M40021.00.PA
		10	6	5	200			M30010.00.PA	22	8	10	100	M40022.00.PA
		11	6	5.5	200			M30011.00.PA	23	8	10	100	M40023.00.PA
		12	6	6	200			M30012.00.PA	24	8	10	100	M40024.00.PA
		13	6	6.5	200		M30013.00.PA	25	8	10	100	M40025.00.PA	
		14	6	7	200		M30014.00.PA	26	8	10	100	M40026.00.PA	
		15	6	7.5	100		M30015.00.PA	27	8	10	100	M40027.00.PA	
16		6	8	100	M30016.00.PA	28	8	10	100	M40028.00.PA			
17		6	8.5	100	M30017.00.PA	29	8	10	100	M40029.00.PA			
18		6	9	100	M30018.00.PA	30	8	10	50	M40030.00.PA			
19		6	9.5	100	M30019.00.PA	32	8	10	50	M40032.00.PA			
20		6	10	100	M30020.00.PA	34	8	10	50	M40034.00.PA			
21		6	10	100	M30021.00.PA	36	8	10	50	M40036.00.PA			
22		6	10	100	M30022.00.PA	38	8	10	50	M40038.00.PA			
23		6	10	100	M30023.00.PA	40	8	10	50	M40040.00.PA			
24		6	10	100	M30024.00.PA	42	8	10	50	M40042.00.PA			
25		6	10	100	M30025.00.PA	44	8	10	50	M40044.00.PA			
26		6	10	100	M30026.00.PA	46	8	10	50	M40046.00.PA			
27		6	10	100	M30027.00.PA	48	8	10	50	M40048.00.PA			
28		6	10	100	M30028.00.PA	50	8	10	20	M40050.00.PA			
29		6	10	100	M30029.00.PA	55	8	10	20	M40055.00.PA			
30		6	10	100	M30030.00.PA	60	8	10	20	M40060.00.PA			
							65	8	10	20	M40065.00.PA		

Isolier-Distanzbolzen

Polyamid
mit Innen- und Aussengewinde
M3 - M4

Werkstoff:
PA = Polyamid, schwarz (Nylon)

Temperaturbeständigkeit:
- 40°C bis +110°C

Bestellbeispiel:
Exemple de commande:
Example of order:

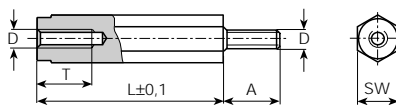
M30006.01.PA
(M3 x 6 x 6 x 3.5 x 8 PA)

Entretoises hexagonales isolantes

polyamide
avec filet femelle et mâle
M3 - M4

Matière:
PA = polyamide, noire (nylon)

Résistant à une température de:
- 40°C à +110°C



Insulating spacers

polyamid
with internal and thread external
M3 - M4

Material:
PA = polyamid, black (nylon)

Temperature range:
- 40°C up to +110°C

D mm	L mm	SW mm	T mm	A mm	Stand.-Packg.	Artikel-Nr. Numéro d'article Part-No.	D mm	L mm	SW mm	T mm	A mm	Stand.-Packg.	Artikel-Nr. Numéro d'article Part-No.
M3	6	6	3.5	8	200	M30006.01.PA	M4	10	8	7	8	200	M40010.01.PA
	8	6	5	8	200	M30008.01.PA		11	8	7	8	100	M40011.01.PA
	10	6	7	8	200	M30010.01.PA		12	8	7	8	100	M40012.01.PA
	11	6	7	8	200	M30011.01.PA		13	8	10	8	100	M40013.01.PA
	12	6	9	8	200	M30012.01.PA		14	8	10	8	100	M40014.01.PA
	13	6	9	8	100	M30013.01.PA		15	8	10	8	100	M40015.01.PA
	14	6	9	8	100	M30014.01.PA		16	8	10	8	100	M40016.01.PA
	15	6	10	8	100	M30015.01.PA		17	8	10	8	100	M40017.01.PA
	16	6	10	8	100	M30016.01.PA		18	8	10	8	100	M40018.01.PA
	17	6	10	8	100	M30017.01.PA		19	8	10	8	100	M40019.01.PA
	18	6	10	8	100	M30018.01.PA		20	8	10	8	100	M40020.01.PA
	19	6	10	8	100	M30019.01.PA		21	8	10	8	50	M40021.01.PA
	20	6	10	8	100	M30020.01.PA		22	8	10	8	50	M40022.01.PA
	21	6	10	8	50	M30021.01.PA		23	8	10	8	50	M40023.01.PA
	22	6	10	8	50	M30022.01.PA		24	8	10	8	50	M40024.01.PA
	23	6	10	8	50	M30023.01.PA		25	8	10	8	50	M40025.01.PA
	24	6	10	8	50	M30024.01.PA		26	8	10	8	50	M40026.01.PA
	25	6	10	8	50	M30025.01.PA		27	8	10	8	50	M40027.01.PA
	26	6	10	8	50	M30026.01.PA		28	8	10	8	50	M40028.01.PA
	27	6	10	8	50	M30027.01.PA		29	8	10	8	50	M40029.01.PA
28	6	10	8	50	M30028.01.PA	30	8	10	8	50	M40030.01.PA		
29	6	10	8	50	M30029.01.PA	32	8	10	8	50	M40032.01.PA		
30	6	10	8	50	M30030.01.PA	34	8	10	8	50	M40034.01.PA		
32	6	10	8	50	M30032.01.PA	36	8	10	8	50	M40036.01.PA		
34	6	10	8	50	M30034.01.PA	38	8	10	8	50	M40038.01.PA		
36	6	10	8	50	M30036.01.PA	40	8	10	8	50	M40040.01.PA		
38	6	10	8	50	M30038.01.PA	45	8	10	8	50	M40045.01.PA		
40	6	10	8	50	M30040.01.PA	50	8	10	8	20	M40050.01.PA		
41	6	10	8	50	M30041.01.PA	55	8	10	8	20	M40055.01.PA		
45	6	10	8	50	M30045.01.PA	60	8	10	8	20	M40060.01.PA		
50	6	10	8	50	M30050.01.PA	65	8	10	8	20	M40065.01.PA		

Andere Abmessungen auf Anfrage

Autres dimensions sur demande

Further dimensions on request

Isolier-Distanzbolzen

Polyamid
mit Aussengewinde
M3 - M4

Werkstoff:

PA = Polyamid, schwarz (Nylon)

Temperaturbeständigkeit:

- 40°C bis +110°C

Bestellbeispiel:

Exemple de commande:

Example of order:

M30005.11.PA

(M3 x 5 x 6 x 6 PA)

Entretoises hexagonales isolantes

polyamide
avec filet mâle
M3 - M4

Matériau:

PA = polyamide, noire (nylon)

Résistant à une température de:

- 40°C à +110°C

Insulating spacers

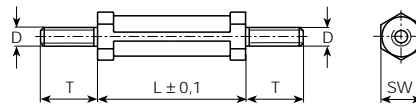
polyamid
with external thread
M3 - M4

Material:

PA = polyamid, black (nylon)

Temperature range:

- 40°C up to +110°C



D mm	L mm	SW mm	T mm	Stand.-Packg.	Artikel-Nr. Numéro d'article Part-No.	D mm	L mm	SW mm	T mm	Stand.-Packg.	Artikel-Nr. Numéro d'article Part-No.
M3	5	6	6	100	M30005.11.PA	M4	5	6	6.4	100	M40005.11.PA
	6	6	6	100	M30006.11.PA		6	6	6.4	100	M40006.11.PA
	7	6	6	100	M30007.11.PA		7	6	6.4	100	M40007.11.PA
	8	6	6	100	M30008.11.PA		8	6	6.4	100	M40008.11.PA
	9	6	6	100	M30009.11.PA		9	6	6.4	100	M40009.11.PA
	10	6	6	100	M30010.11.PA		10	6	6.4	100	M40010.11.PA
	11	6	6	100	M30011.11.PA		11	6	6.4	100	M40011.11.PA
	12	6	6	100	M30012.11.PA		12	6	6.4	100	M40012.11.PA
	13	6	6	100	M30013.11.PA		13	6	6.4	100	M40013.11.PA
	14	6	6	100	M30014.11.PA		14	6	6.4	100	M40014.11.PA
	15	6	6	100	M30015.11.PA		15	6	6.4	100	M40015.11.PA
	16	6	6	100	M30016.11.PA		16	6	6.4	100	M40016.11.PA
	17	6	6	100	M30017.11.PA		17	6	6.4	100	M40017.11.PA
	18	6	6	100	M30018.11.PA		18	6	6.4	100	M40018.11.PA
	19	6	6	100	M30019.11.PA		19	6	6.4	100	M40019.11.PA
	20	6	6	100	M30020.11.PA		20	6	6.4	100	M40020.11.PA
	21	6	6	50	M30021.11.PA		21	6	6.4	50	M40021.11.PA
	22	6	6	50	M30022.11.PA		22	6	6.4	50	M40022.11.PA
	23	6	6	50	M30023.11.PA		23	6	6.4	50	M40023.11.PA
	24	6	6	50	M30024.11.PA		24	6	6.4	50	M40024.11.PA
	25	6	6	50	M30025.11.PA		25	6	6.4	50	M40025.11.PA
	26	6	6	50	M30026.11.PA		26	6	6.4	50	M40026.11.PA
	27	6	6	50	M30027.11.PA		27	6	6.4	50	M40027.11.PA
	28	6	6	50	M30028.11.PA		28	6	6.4	50	M40028.11.PA
	29	6	6	50	M30029.11.PA		29	6	6.4	50	M40029.11.PA
	30	6	6	50	M30030.11.PA		30	6	6.4	50	M40030.11.PA
	31	6	6	50	M30031.11.PA		31	6	6.4	50	M40031.11.PA
	32	6	6	50	M30032.11.PA		32	6	6.4	50	M40032.11.PA
	33	6	6	50	M30033.11.PA		33	6	6.4	50	M40033.11.PA
	34	6	6	50	M30034.11.PA		34	6	6.4	50	M40034.11.PA
	35	6	6	50	M30035.11.PA		35	6	6.4	50	M40035.11.PA
	36	6	6	50	M30036.11.PA		36	6	6.4	50	M40036.11.PA

Andere Abmessungen auf Anfrage

Autres dimensions sur demande

Further dimensions on request

Isolier-Distanzbolzen

Polyamid
einschnappbar mit Innengewinde
M3

Werkstoff:
PA = Polyamid, schwarz (Nylon)

Temperaturbeständigkeit:
- 40°C bis +110°C

Bestellbeispiel:
Exemple de commande:
Example of order:

M30E06.00.PA
(M3 E x 6 x 8 x 3 x 9.5 PA)

Entretoises hexagonales isolantes

polyamide
encliquante avec filet femelle
M3

Matière:
PA = polyamide, noire (nylon)

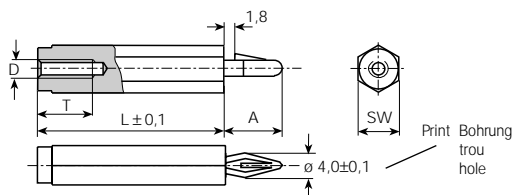
Résistant à une température de:
- 40°C à +110°C

Insulating spacers

polyamid
snap in form with internal thread
M3

Material:
PA = polyamid, black (nylon)

Temperature range:
- 40°C up to +110°C



D mm	L mm	SW mm	T mm	A mm	Stand.-Packg.	Artikel-Nr. Numéro d'article Part-No.	D mm	L mm	SW mm	T mm	A mm	Stand.-Packg.	Artikel-Nr. Numéro d'article Part-No.
M3	6	8	3	9.5	200	M30E06.00.PA	M4	14	8	9	9.5	100	M40E14.00.PA
	7	8	3.5	9.5	200	M30E07.00.PA							
	8	8	4	9.5	200	M30E08.00.PA	18	8	9	9.5	100	M40E18.00.PA	
	9	8	4.5	9.5	200	M30E09.00.PA							
	10	8	5	9.5	200	M30E10.00.PA							
	11	8	5.5	9.5	200	M30E11.00.PA							
	12	8	6	9.5	200	M30E12.00.PA							
	13	8	6.5	9.5	100	M30E13.00.PA							
	14	8	7	9.5	100	M30E14.00.PA							
	15	8	7.5	9.5	100	M30E15.00.PA							
	16	8	8	9.5	100	M30E16.00.PA							
	17	8	8.5	9.5	100	M30E17.00.PA							
	18	8	9	9.5	100	M30E18.00.PA							
	19	8	9.5	9.5	100	M30E19.00.PA							
	20	8	10	9.5	100	M30E20.00.PA							
	21	8	10	9.5	100	M30E21.00.PA							
	22	8	10	9.5	100	M30E22.00.PA							
	23	8	10	9.5	100	M30E23.00.PA							
	24	8	10	9.5	100	M30E24.00.PA							
	25	8	10	9.5	100	M30E25.00.PA							
	26	8	10	9.5	100	M30E26.00.PA							
	27	8	10	9.5	100	M30E27.00.PA							
	28	8	10	9.5	100	M30E28.00.PA							
	29	8	10	9.5	100	M30E29.00.PA							
	30	8	10	9.5	100	M30E30.00.PA							
	31	8	10	9.5	100	M30E31.00.PA							
	32	8	10	9.5	100	M30E32.00.PA							
	33	8	10	9.5	100	M30E33.00.PA							
	34	8	10	9.5	100	M30E34.00.PA							
	35	8	10	9.5	100	M30E35.00.PA							
	36	8	10	9.5	100	M30E36.00.PA							
	37	8	10	9.5	100	M30E37.00.PA							
	38	8	10	9.5	100	M30E38.00.PA							
	39	8	10	9.5	100	M30E39.00.PA							
	40	8	10	9.5	100	M30E40.00.PA							
	41	8	10	9.5	100	M30E41.00.PA							
	42	8	10	9.5	100	M30E42.00.PA							
	43	8	10	9.5	100	M30E43.00.PA							
	44	8	10	9.5	100	M30E44.00.PA							
	45	8	10	9.5	100	M30E45.00.PA							
	46	8	10	9.5	100	M30E46.00.PA							
	47	8	10	9.5	100	M30E47.00.PA							
	48	8	10	9.5	100	M30E48.00.PA							
	49	8	10	9.5	100	M30E49.00.PA							
	50	8	10	9.5	100	M30E50.00.PA							

Andere Abmessungen auf Anfrage

Autres dimensions sur demande

Further dimensions on request

Isolier-Distanzbolzen

Polyamid
einschnappbar mit Aussengewinde
M3 - M4

Werkstoff:

PA = Polyamid, schwarz (Nylon)

Temperaturbeständigkeit:

- 40°C bis +110°C

Bestellbeispiel:

Exemple de commande:

Example of order:

M30D05.01.PA

(M3 D x 5 x 6 x 6 x 9.5 PA)

Entretoises hexagonales isolantes

polyamide
encliquante avec filet mâle
M3 - M4

Matière:

PA = polyamide, noire (nylon)

Résistant à une température de:

- 40°C à +110°C

Insulating spacers

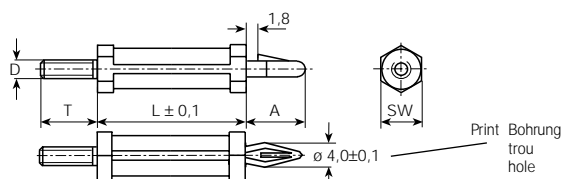
polyamid
snap in form with external thread
M3 - M4

Material:

PA = polyamid, black (nylon)

Temperature range:

- 40°C up to +110°C



D mm	L mm	SW mm	T mm	A mm	Stand.-Packg.	Artikel-Nr. Numéro d'article Part-No.	D mm	L mm	SW mm	T mm	A mm	Stand.-Packg.	Artikel-Nr. Numéro d'article Part-No.
M3	5	6	6	9.5	200	M30D05.01.PA	M4	5	8	6.4	9.5	200	M40D05.01.PA
	6	6	6	9.5	200	M30D06.01.PA		6	8	6.4	9.5	200	M40D06.01.PA
	7	6	6	9.5	200	M30D07.01.PA		7	8	6.4	9.5	200	M40D07.01.PA
	8	6	6	9.5	200	M30D08.01.PA		8	8	6.4	9.5	200	M40D08.01.PA
	9	6	6	9.5	200	M30D09.01.PA		9	8	6.4	9.5	200	M40D09.01.PA
	10	6	6	9.5	200	M30D10.01.PA		10	8	6.4	9.5	200	M40D10.01.PA
	11	6	6	9.5	200	M30D11.01.PA		11	8	6.4	9.5	200	M40D11.01.PA
	12	6	6	9.5	200	M30D12.01.PA		12	8	6.4	9.5	200	M40D12.01.PA
	13	6	6	9.5	100	M30D13.01.PA		13	8	6.4	9.5	100	M40D13.01.PA
	14	6	6	9.5	100	M30D14.01.PA		14	8	6.4	9.5	100	M40D14.01.PA
	15	6	6	9.5	100	M30D15.01.PA		15	8	6.4	9.5	100	M40D15.01.PA
	16	6	6	9.5	100	M30D16.01.PA		16	8	6.4	9.5	100	M40D16.01.PA
	17	6	6	9.5	100	M30D17.01.PA		17	8	6.4	9.5	100	M40D17.01.PA
	18	6	6	9.5	100	M30D18.01.PA		18	8	6.4	9.5	100	M40D18.01.PA
	19	6	6	9.5	100	M30D19.01.PA		19	8	6.4	9.5	100	M40D19.01.PA
	20	6	6	9.5	100	M30D20.01.PA		20	8	6.4	9.5	100	M40D20.01.PA
	21	6	6	9.5	100	M30D21.01.PA		21	8	6.4	9.5	100	M40D21.01.PA
	22	6	6	9.5	100	M30D22.01.PA		22	8	6.4	9.5	100	M40D22.01.PA
	23	6	6	9.5	100	M30D23.01.PA		23	8	6.4	9.5	100	M40D23.01.PA
	24	6	6	9.5	100	M30D24.01.PA		24	8	6.4	9.5	100	M40D24.01.PA
	25	6	6	9.5	100	M30D25.01.PA		25	8	6.4	9.5	100	M40D25.01.PA
	26	6	6	9.5	100	M30D26.01.PA		26	8	6.4	9.5	100	M40D26.01.PA
	27	6	6	9.5	100	M30D27.01.PA		27	8	6.4	9.5	100	M40D27.01.PA
	28	6	6	9.5	100	M30D28.01.PA		28	8	6.4	9.5	100	M40D28.01.PA
	29	6	6	9.5	100	M30D29.01.PA		29	8	6.4	9.5	100	M40D29.01.PA
	30	6	6	9.5	100	M30D30.01.PA		30	8	6.4	9.5	100	M40D30.01.PA
	31	6	6	9.5	100	M30D31.01.PA		31	8	6.4	9.5	100	M40D31.01.PA
	32	6	6	9.5	100	M30D32.01.PA		32	8	6.4	9.5	100	M40D32.01.PA
	33	6	6	9.5	100	M30D33.01.PA		33	8	6.4	9.5	100	M40D33.01.PA
	34	6	6	9.5	100	M30D34.01.PA		34	8	6.4	9.5	100	M40D34.01.PA
	35	6	6	9.5	100	M30D35.01.PA		35	8	6.4	9.5	100	M40D35.01.PA
	36	6	6	9.5	100	M30D36.01.PA		36	8	6.4	9.5	100	M40D36.01.PA

Andere Abmessungen auf Anfrage

Autres dimensions sur demande

Further dimensions on request

Isolier-Abstandshalter

Polyamid
einschnappbar mit Kopf

Werkstoff:
PA = Polyamid, schwarz (Nylon)

Temperaturbeständigkeit:
- 40°C bis +110°C

Bestellbeispiel:
Exemple de commande:
Example of order:

AH2E032.PA
(AH 2 E x 3.2 x 9.9 PA)

Entretoises isolantes

polyamide
encliquante avec tête

Matière:
PA = polyamide, noire (nylon)

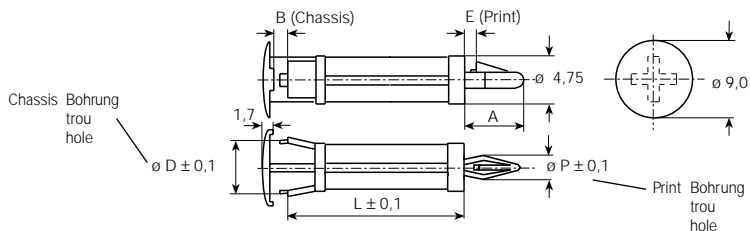
Résistant à une température de:
- 40°C à +110°C

Insulating spacers

polyamid
snap in form with head

Material:
PA = polyamid, black (nylon)

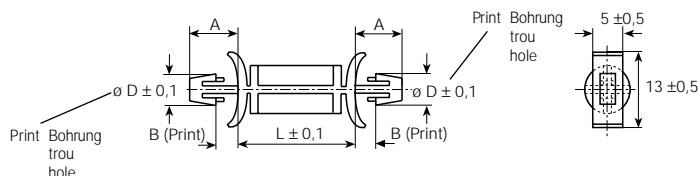
Temperature range:
- 40°C up to +110°C



Chassis B mm	L mm	øD mm	A mm	Print E mm	øP mm	Stand.-Packg.	Artikel-Nr. Numéro d'article Part-No.	Chassis B mm	L mm	øD mm	A mm	Print E mm	øP mm	Stand.-Packg.	Artikel-Nr. Numéro d'article Part-No.	
1	5	5	10.5	0.6	4	100	AH16E050.PA	2	16	5	9.9	1.5	3.2	100	AH2E160.PA	
	7	5	10.5	0.6	4	100	AH16E070.PA		17	5	9.9	1.5	3.2	100	AH2E170.PA	
	8	5	10.5	0.6	4	100	AH16E080.PA		18	5	9.9	1.5	3.2	100	AH2E180.PA	
	9.5	5	10.5	0.6	4	100	AH16E095.PA		19	5	9.9	1.5	3.2	100	AH2E190.PA	
	12	5	10.5	0.6	4	100	AH16E120.PA		20	5	9.9	1.5	3.2	100	AH2E200.PA	
	13	5	10.5	0.6	4	100	AH16E130.PA		3	3.2	5	9.9	1.5	3.2	100	AH3E032.PA
	15	5	10.5	0.6	4	100	AH16E150.PA			4	5	9.9	1.5	3.2	100	AH3E040.PA
	17	5	10.5	0.6	4	100	AH16E170.PA			5	5	9.9	1.5	3.2	100	AH3E050.PA
	25	5	10.5	0.6	4	100	AH16E250.PA			6	5	9.9	1.5	3.2	100	AH3E060.PA
	27	5	10.5	0.6	4	100	AH16E270.PA			7	5	9.9	1.5	3.2	100	AH3E070.PA
2	3.2	5	9.9	1.5	3.2	100	AH2E032.PA	8		5	9.9	1.5	3.2	100	AH3E080.PA	
	4	5	9.9	1.5	3.2	100	AH2E040.PA	9		5	9.9	1.5	3.2	100	AH3E090.PA	
	5	5	9.9	1.5	3.2	100	AH2E050.PA	10		5	9.9	1.5	3.2	100	AH3E100.PA	
	6	5	9.9	1.5	3.2	100	AH2E060.PA	11		5	9.9	1.5	3.2	100	AH3E110.PA	
	7	5	9.9	1.5	3.2	100	AH2E070.PA	12		5	9.9	1.5	3.2	100	AH3E120.PA	
	8	5	9.9	1.5	3.2	100	AH2E080.PA	13	5	9.9	1.5	3.2	100	AH3E130.PA		
	9	5	9.9	1.5	3.2	100	AH2E090.PA	14	5	9.9	1.5	3.2	100	AH3E140.PA		
	10	5	9.9	1.5	3.2	100	AH2E100.PA	15	5	9.9	1.5	3.2	100	AH3E150.PA		
	11	5	9.9	1.5	3.2	100	AH2E110.PA	16	5	9.9	1.5	3.2	100	AH3E160.PA		
	12	5	9.9	1.5	3.2	100	AH2E120.PA	17	5	9.9	1.5	3.2	100	AH3E170.PA		
13	5	9.9	1.5	3.2	100	AH2E130.PA	18	5	9.9	1.5	3.2	100	AH3E180.PA			
14	5	9.9	1.5	3.2	100	AH2E140.PA	19	5	9.9	1.5	3.2	100	AH3E190.PA			
15	5	9.9	1.5	3.2	100	AH2E150.PA	20	5	9.9	1.5	3.2	100	AH3E200.PA			

Bestellbeispiel:
Exemple de commande:
Example of order:

AH1E085.PA
(AH 1 E x 8.5 x 7.8 PA)



Print B mm	L mm	øD mm	A mm	Stand.-Packg.	Artikel-Nr. Numéro d'article Part-No.	Print B mm	L mm	øD mm	A mm	Stand.-Packg.	Artikel-Nr. Numéro d'article Part-No.
1.5-2.6	8.5	4	7.8	100	AH1E085.PA	1.5-2.6	8.5	4.75	7.8	100	AH15E085.PA
	12	4	7.8	100	AH1E120.PA		12	4.75	7.8	100	AH15E120.PA
	15.1	4	7.8	100	AH1E151.PA		15.1	4.75	7.8	100	AH15E151.PA
	18.3	4	7.8	100	AH1E183.PA		18.3	4.75	7.8	100	AH15E183.PA
	21.5	4	7.8	100	AH1E215.PA		21.5	4.75	7.8	100	AH15E215.PA
	24.5	4	7.8	100	AH1E245.PA		24.5	4.75	7.8	100	AH15E245.PA

Andere Abmessungen auf Anfrage

Autres dimensions sur demande

Further dimensions on request

Isolier-Distanzbolzen

Polystyrol
mit Innen- und Aussengewinde aus Metall
M3 - M4

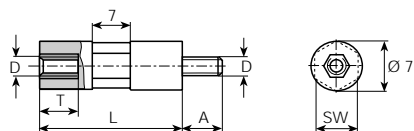
Werkstoff:

PS = Kunststoffmantel aus Polystyrol grau
Aussengewindebolzen aus Stahl verzinkt
Innengewindebuchse aus Messing blank

Temperaturbeständigkeit:
- 40°C bis +70°C

Bestellbeispiel:
Exemple de commande:
Example of order:

M30015.01.PS
(M3 x 15 x 6 x 7 x 7 PS)



Entretoises hexagonales isolantes

polystyrène
avec filet métallique femelle et mâle
M3 - M4

Matière:

PS = Partie isolée en polystyrène gris
Tige filetée en acier zingué
Filet intérieur en laiton brut

Résistant à une température de:
- 40°C à +70°C

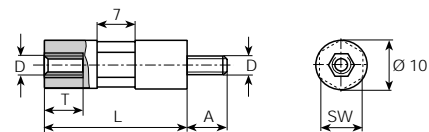
Insulating spacers

polystyrene
with internal and external metal thread
M3 - M4

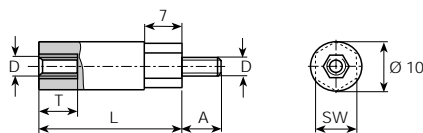
Material:

PS = Plastic part of grey polystyrene
Threaded-end of zinc-plated steel
Threaded-bush of yellow brass clean

Temperature range:
- 40°C up to +70°C



D mm	L mm	SW mm	T mm	A mm	Stand.-Packg.	Artikel-Nr. Numéro d'article Part-No.
M3	15	6	7	7	100	M30015.01.PS
	20	6	7	7	100	M30020.01.PS
	25	6	7	7	50	M30025.01.PS
	30	6	7	7	50	M30030.01.PS
	40	6	7	7	50	M30040.01.PS
	55	6	7	7	50	M30055.01.PS



D mm	L mm	SW mm	T mm	A mm	Stand.-Packg.	Artikel-Nr. Numéro d'article Part-No.
M4	15	9	7	7	100	M40015.01.PS
	20	9	7	7	100	M40020.01.PS
	25	9	7	7	50	M40025.01.PS
	30	9	7	7	50	M40030.01.PS
	40	9	7	7	50	M40040.01.PS
	55	9	7	7	50	M40055.01.PS
	60	9	7	7	50	M40060.01.PS
	90	9	7	7	50	M40090.01.PS

D mm	L mm	SW mm	T mm	A mm	Stand.-Packg.	Artikel-Nr. Numéro d'article Part-No.
M4	10	9	3.5	7	100	M40010.01.PS
	12	9	3.5	7	100	M40012.01.PS
	14	9	3.5	7	100	M40014.01.PS
	16	9	7	7	100	M40016.01.PS
	18	9	7	7	100	M40018.01.PS
	22	9	7	7	50	M40022.01.PS
	24	9	7	7	50	M40024.01.PS
	28	9	7	7	50	M40028.01.PS
	32	9	7	7	50	M40032.01.PS
	35	9	7	7	50	M40035.01.PS
	38	9	7	7	50	M40038.01.PS
	45	9	7	7	50	M40045.01.PS
	50	9	7	7	50	M40050.01.PS
	56	9	7	7	20	M40056.01.PS
	62	9	7	7	20	M40062.01.PS
	65	9	7	7	20	M40065.01.PS
	70	9	7	7	20	M40070.01.PS
	75	9	7	7	20	M40075.01.PS
	80	9	7	7	20	M40080.01.PS
	85	9	7	7	20	M40085.01.PS

Andere Abmessungen auf Anfrage

Autres dimensions sur demande

Further dimensions on request

Isolier-Distanzbolzen

Polystyrol
mit Innen- und Aussengewinde aus Metall
M5 - M6

Werkstoff:

PS = Kunststoffmantel aus Polystyrol grau
Aussengewindebolzen aus Stahl verzinkt
Innengewindebühse aus Messing blank

Temperaturbeständigkeit:

- 40°C bis +70°C

Bestellbeispiel:

Exemple de commande:

Example of order:

M50015.01.PS

(M5 x 15 x 13 x 7 x 7 PS)

Entretoises hexagonales isolantes

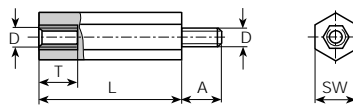
polystyrène
avec filet métallique femelle et mâle
M5 - M6

Matière:

PS = Partie isolée en polystyrène gris
Tige filetée en acier zingué
Filet intérieur en laiton brut

Résistant à une température de:

- 40°C à +70°C



Insulating spacers

polystyrene
with internal and external metal thread
M5 - M6

Material:

PS = Plastic part of grey polystyrene
Threaded-end of zinc-plated steel
Threaded-bush of yellow brass clean

Temperature range:

- 40°C up to +70°C

D mm	L mm	SW mm	T mm	A mm	Stand.-Packg.	Artikel-Nr. Numéro d'article Part-No.	D mm	L mm	SW mm	T mm	A mm	Stand.-Packg.	Artikel-Nr. Numéro d'article Part-No.
M5	15	13	7	7	100	M50015.01.PS	M6	15	13	8	7	100	M60015.01.PS
	20	13	7	7	100	M50020.01.PS		20	13	8	7	100	M60020.01.PS
	25	13	7	7	100	M50025.01.PS		25	13	8	7	100	M60025.01.PS
	30	13	7	7	100	M50030.01.PS		30	13	8	7	100	M60030.01.PS
	35	13	7	7	50	M50035.01.PS		35	13	8	7	50	M60035.01.PS
	40	13	7	7	50	M50040.01.PS		40	13	8	7	50	M60040.01.PS
	45	13	7	7	50	M50045.01.PS		45	13	8	7	50	M60045.01.PS
	50	13	7	7	50	M50050.01.PS		50	13	8	7	50	M60050.01.PS
	55	13	7	7	20	M50055.01.PS		55	13	8	7	20	M60055.01.PS
	60	13	7	7	20	M50060.01.PS		60	13	8	7	20	M60060.01.PS
	65	13	7	7	20	M50065.01.PS		65	13	8	7	20	M60065.01.PS
	70	13	7	7	20	M50070.01.PS		70	13	8	7	20	M60070.01.PS
	75	13	7	7	20	M50075.01.PS		75	13	8	7	20	M60075.01.PS
	80	13	7	7	20	M50080.01.PS		80	13	8	7	20	M60080.01.PS
	85	13	7	7	20	M50085.01.PS		85	13	8	7	20	M60085.01.PS
	90	13	7	7	20	M50090.01.PS		90	13	8	7	20	M60090.01.PS
100	13	7	7	20	M50100.01.PS	100	13	8	7	20	M60100.01.PS		
110	13	7	7	20	M50110.01.PS	110	13	8	7	20	M60110.01.PS		
120	13	7	7	20	M50120.01.PS	120	13	8	7	20	M60120.01.PS		

Distanzbolzen

Werkstoff:

PS = Kunststoffmantel aus Polystyrol grau
Durchgehender Gewindebolzen aus Stahl verzinkt

Temperaturbeständigkeit:

- 40°C bis +70°C

Bestellbeispiel:

Exemple de commande:

Example of order:

M60045.11.PS

(M6 x 45 x 9 x 10 PS)

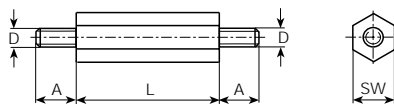
Entretoises hexagonales

Matière:

PS = Partie isolée en polystyrène gris
Tige filetée totalement en acier zingué

Résistant à une température de:

- 40°C à +70°C



Insulating spacers

Material:

PS = Plastic part of grey polystyrene
Threaded-end rod of zinc-plated steel

Temperature range:

- 40°C up to +70°C

D mm	L mm	SW mm	A mm	Stand.-Packg.	Artikel-Nr. Numéro d'article Part-No.
M6	45	9	10	100	M60045.11.PS
	50	9	10	100	M60050.11.PS
	60	9	10	50	M60060.11.PS
	70	9	10	50	M60070.11.PS
	85	9	10	50	M60085.11.PS
	100	9	10	50	M60100.11.PS
	110	9	10	50	M60110.11.PS
	120	9	10	50	M60120.11.PS
	140	9	10	50	M60140.11.PS
180	9	10	50	M60180.11.PS	

Andere Abmessungen auf Anfrage

Autres dimensions sur demande

Further dimensions on request

Ziermutter

Polystyrol
mit Innengewinde aus Metall
M4 - M6

Werkstoff:

PS = Kunststoffmantel aus Polystyrol grau
Innengewindebühse aus Messing blank

Temperaturbeständigkeit:

- 40°C bis +70°C

Bestellbeispiel:

Exemple de commande:
Example of order:

M40.0.PS
(M4 x 12 x 14 x 8 PS - 0)

Bouchons écrou

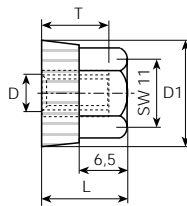
polystyrène
avec filet métallique femelle
M4 - M6

Matière:

PS = Partie isolée en polystyrène gris
Filet intérieur en laiton brut

Résistant à une température de:

- 40°C à +70°C



Cap nut

polystyrene
with internal metal thread
M4 - M6

Material:

PS = Plastic part of grey polystyrene
Threaded-bush of yellow brass clean

Temperature range:

- 40°C up to +70°C

D mm	L mm	øD1 mm	T mm	Stand.-Packg.	Artikel-Nr. Numéro d'article Part-No.
M4	12 ±1	14	8 ±1	100	M40.0.PS
M5	12 ±1	14	8 ±1	100	M50.0.PS
M6	12 ±1	14	8 ±1	100	M60.0.PS

Ziermutter unverlierbar

mit Innengewinde aus Metall

Werkstoff:

PS = Kunststoffmantel aus Polystyrol grau
Innengewindebolzen aus Stahl verzinkt

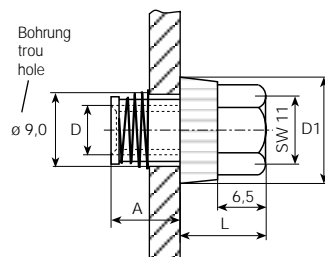
Temperaturbeständigkeit:

- 40°C bis +70°C

Bestellbeispiel:

Exemple de commande:
Example of order:

M60.10.PS
(M6 x 12 x 14 x 10 PS - 10)



Bouchons écrou imperdable

avec filet métallique femelle

Matière:

PS = Partie isolée en polystyrène gris
Tige intérieur en acier zingué

Résistant à une température de:

- 40°C à +70°C

Cap nut captive

with internal metal thread

Material:

PS = Plastic part of grey polystyrene
Threaded-end of yellow zinc-plated steel

Temperature range:

- 40°C up to +70°C

D mm	L mm	øD1 mm	A mm	Stand.-Packg.	Artikel-Nr. Numéro d'article Part-No.
M6	12 ±1	14	10 ±1	100	M60.10.PS

Zierschraube

mit Aussengewinde aus Metall

Werkstoff:

PS = Kunststoffmantel aus Polystyrol grau
Aussengewindebolzen aus Stahl verzinkt

Temperaturbeständigkeit:

- 40°C bis +70°C

Bestellbeispiel:

Exemple de commande:
Example of order:

M40.1.PS
(M4 x 12 x 14 x 8 PS - 1)

Bouchons vis

avec filet métallique mâle

Matière:

PS = Partie isolée en polystyrène gris
Tige fileté en acier zingué

Résistant à une température de:

- 40°C à +70°C

Cap bolt

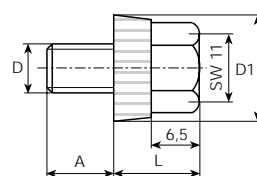
with external metal thread

Material:

PS = Plastic part of grey polystyrene
Threaded-end of zinc-plated steel

Temperature range:

- 40°C up to +70°C



D mm	L mm	øD1 mm	A mm	Stand.-Packg.	Artikel-Nr. Numéro d'article Part-No.
M4	12 ±1	14	8 ±1	100	M40.1.PS
M5	12 ±1	14	8 ±1	100	M50.1.PS
M6	12 ±1	14	8 ±1	100	M60.1.PS

Andere Abmessungen auf Anfrage

Autres dimensions sur demande

Further dimensions on request

Distanzhülsen

Aluminium
Messing
Stahl
für Bolzen M2 - M3

Werkstoff:

AL = Aluminium
MS = Messing
ST = Stahl

Oberflächenbehandlung: Code
bl = blank (0)
ag = versilbert (1)
ni = vernickelt (5)
sn = verzinkt (8)
zn = verzinkt (9)

Bestellbeispiel:
Exemple de commande:
Example of order:

X30020030.10
(X3.0 x 0.3 x 2.0 AL bl)

Entretoises

aluminium
laiton
acier
pour borne M2 - M3

Matière:

AL = aluminium
MS = laiton
ST = acier

Traitements de surface: Code
bl = brut (0)
ag = argenté (1)
ni = nickelé (5)
sn = étamé (8)
zn = zingué (9)

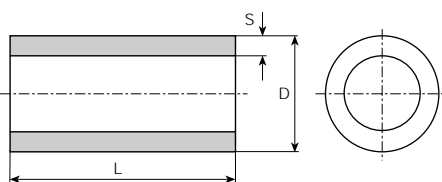
Spacer sleeves

aluminium
brass
steel
for stud M2 - M3

Material:

AL = aluminium
MS = brass
ST = steel

Surface-plating: Code
bl = clean (0)
ag = silver-plated (1)
ni = nickel-plated (5)
sn = tin-plated (8)
zn = zinc-plated (9)



für Bolzen pour borne for stud	øD mm	S mm	L mm	Werkstoff Matière Material	Stand.-Packg.		Artikel-Nr. Numéro d'article Part-No.	für Bolzen pour borne for stud	øD mm	S mm	L mm	Werkstoff Matière Material	Stand.-Packg.		Artikel-Nr. Numéro d'article Part-No.		
					2000	5000							2000	5000			
M2	3	0.3	2	AL		•	X30020030.10	M2.5	4.5	0.9	2	AL		•	X45020090.10		
		0.4	2.1	MS		•	X30021040.6()			0.9	2.2	AL		•	X45022090.10		
		0.3	2.5	MS		•	X30025030.6()			0.9	2.5	AL		•	X45025090.10		
		0.3	3	MS		•	X30030030.6()			0.9	3	AL		•	X45030090.10		
		0.3	3	ST		•	X30030030.9()			0.9	3.5	AL		•	X45035090.10		
		0.3	4	AL		•	X30040030.10			0.9	4	AL		•	X45040090.10		
		0.3	5	AL		•	X30050030.10			0.9	4.4	AL		•	X45044090.10		
		0.4	5	MS		•	X30050040.6()			0.9	4.5	AL		•	X45045090.10		
		0.5	5	MS		•	X30050050.6()			0.9	5	AL		•	X45050090.10		
		0.3	6	MS		•	X30060030.6()			0.9	5	ST		•	X45050090.9()		
		0.3	7	ST		•	X30070030.9()			0.9	6	AL		•	X45060090.10		
		0.5	13	MS		•	X30130050.6()			0.9	6.5	AL		•	X45065090.10		
		0.5	13	ST		•	X30130050.9()			0.9	7	AL		•	X45070090.10		
		M2	4	0.8	2	AL				•	X40020080.10	0.9	8	AL		•	X45080090.10
				0.75	2.5	MS				•	X40025075.6()	0.9	8.6	AL	1000	•	X45086090.10
				0.8	3	AL				•	X40030080.10	0.9	9	AL		•	X45090090.10
				0.8	4	AL				•	X40040080.10	0.9	10	AL		•	X45100090.10
0.75	5			MS		•	X40050075.6()	0.9	10.5	AL	1000	•	X45105090.10				
0.8	5			AL		•	X40050080.10	0.9	11	AL		•	X45110090.10				
0.8	5.3			AL		•	X40053080.10	0.9	12	AL		•	X45120090.10				
0.8	6			AL		•	X40060080.10	0.9	14	AL		•	X45140090.10				
0.8	7			AL		•	X40070080.10	0.9	15	AL		•	X45150090.10				
0.8	8			AL		•	X40080080.10	0.9	16	AL		•	X45160090.10				
0.8	9			AL		•	X40090080.10	0.9	20	AL		•	X45200090.10				
0.8	10			AL	1000	•	X40100080.10	M3	4	0.4	4	AL	1000	•	X40040040.10		
0.8	12			AL	1000	•	X40120080.10			0.4	8	AL		•	X40080040.10		
0.8	15			AL	1000	•	X40150080.10			0.4	12	AL	1000	•	X40120040.10		
0.8	16			AL	1000	•	X40160080.10			0.4	12	MS	1000	•	X40120040.6()		
0.8	19			AL	1000	•	X40190080.10			0.4	28	MS	500	•	X40280040.6()		
0.8	20			AL	1000	•	X40200080.10			M3	4.5	0.5	3	MS		•	X45030050.6()
0.8	30	AL	500	•	X40300080.10	M3	4.8					0.5	3	MS		•	X48030050.6()
M2.5	4	0.5	1.9	MS				•	X40019050.6()								
		0.5	3	MS		•	X40030050.6()										
		0.5	4	AL		•	X40040050.10										
		0.5	4	MS		•	X40040050.6()										
		0.5	9	MS		•	X40090050.6()										
		0.5	12	MS	1000	•	X40120050.6()										
		0.5	18.6	MS	1000	•	X40186050.6()										

Andere Abmessungen auf Anfrage

Autres dimensions sur demande

Further dimensions on request

für Bolzen pour borne for stud	øD mm	S mm	L mm	Werkstoff Matière Material	Stand.-Packg.		Artikel-Nr. Numéro d'article Part-No.		für Bolzen pour borne for stud	øD mm	S mm	L mm	Werkstoff Matière Material	Stand.-Packg.		Artikel-Nr. Numéro d'article Part-No.	
					2000	5000								2000	5000		
M3	5	0.75	2	AL		•	X50020075.10		M3	5.5	1.1	1	AL	•		X55010110.10	
		0.75	2	MS		•	X50020075.6()				1.1	1.5	AL	•		X55015110.10	
		0.75	2	ST	1000		X50020075.9()				1.1	2	AL	•		X55020110.10	
		0.75	2.5	AL		•	X50025075.10				1.1	2.5	AL	•		X55025110.10	
		0.75	2.5	ST	1000		X50025075.9()				1.1	3	AL	•		X55030110.10	
		0.75	3	AL		•	X50030075.10				1.1	3.5	AL	•		X55035110.10	
		0.75	3	MS		•	X50030075.6()				1.1	4	AL	•		X55040110.10	
		0.75	3	ST	•		X50030075.9()				1.1	4.2	AL	•		X55042110.10	
		0.75	3.5	AL		•	X50035075.10				1.1	4.6	AL	•		X55046110.10	
		0.75	4	AL		•	X50040075.10				1.1	4.7	AL	•		X55047110.10	
		0.75	4	ST	•		X50040075.9()				1.1	5	AL	•		X55050110.10	
		0.75	4.5	MS		•	X50045075.6()				1.1	5.3	AL	1000		X55053110.10	
		1.0	4.5	ST		•	X50045100.9()				1.1	5.5	AL		•	X55055110.10	
		0.75	5	AL		•	X50050075.10				1.1	6	AL		•	X55060110.10	
		0.75	5	MS		•	X50050075.6()				1.1	6.5	AL		•	X55065110.10	
		0.75	5	ST		•	X50050075.9()				1.1	6.6	AL	1000		X55066110.10	
		0.8	5	ST		•	X50050080.9()				1.1	7	AL		•	X55070110.10	
		1.0	5	MS		•	X50050100.6()				1.1	7.5	AL	1000		X55075110.10	
		0.75	5.5	AL	1000		X50055075.10				1.1	8	AL		•	X55080110.10	
		0.75	6	AL		•	X50060075.10				1.1	9	AL	1000		X55090110.10	
		0.75	6	ST		•	X50060075.9()				1.1	9.5	AL	500		X55095110.10	
		0.75	6.5	AL		•	X50065075.10				1.1	10	AL		•	X55100110.10	
		0.8	6.5	ST	•		X50065080.9()				1.1	10.5	AL		•	X55105110.10	
		0.75	7	AL		•	X50070075.10				1.1	10.7	AL		•	X55107110.10	
		0.75	7	MS		•	X50070075.6()				1.1	11	AL		•	X55110110.10	
		0.75	8	AL		•	X50080075.10				1.1	11.5	AL	1000		X55115110.10	
		0.75	8	MS		•	X50080075.6()				1.1	11.6	AL		•	X55116110.10	
		0.75	8	ST	1000		X50080075.9()				1.1	12	AL		•	X55120110.10	
		0.75	8.5	MS		•	X50085075.6()				1.1	12.5	AL	1000		X55125110.10	
		0.75	9	AL		•	X50090075.10				1.1	13	AL		•	X55130110.10	
		0.75	9	ST	1000		X50090075.9()				1.1	14	AL		•	X55140110.10	
		0.75	9.5	AL		•	X50095075.10				1.1	15	AL		•	X55150110.10	
		0.75	10	AL		•	X50100075.10				1.1	16	AL		•	X55160110.10	
		0.75	10	MS		•	X50100075.6()				1.1	18	AL		•	X55180110.10	
		0.75	10	ST		•	X50100075.9()				1.1	19	AL		•	X55190110.10	
		0.8	10	ST	1000		X50100080.9()				1.1	20	AL		•	X55200110.10	
		0.75	11	AL		•	X50110075.10				1.1	22	AL		•	X55220110.10	
		0.75	11	MS		•	X50110075.6()				1.1	24	AL	500		X55240110.10	
		0.75	11	ST		•	X50110075.9()				1.1	25	AL		•	X55250110.10	
		0.75	11.5	AL	1000		X50115075.10				1.1	26.8	AL		•	X55268110.10	
		0.75	12	AL		•	X50120075.10				1.1	27.5	AL		•	X55275110.10	
		0.75	12	MS		•	X50120075.6()				1.1	30	AL		•	X55300110.10	
		0.75	12	ST		•	X50120075.9()				1.1	32	AL		•	X55320110.10	
		0.75	13	AL		•	X50130075.10				1.1	38	AL		•	X55380110.10	
		0.75	13	ST		•	X50130075.9()				1.1	40	AL		•	X55400110.10	
		0.75	14	AL		•	X50140075.10										
		0.75	14	ST		•	X50140075.9()										
0.75	15	AL		•	X50150075.10												
0.75	16	AL		•	X50160075.10												
0.75	16	ST	1000		X50160075.9()												
0.75	17	ST	1000		X50170075.9()												
0.75	18	AL		•	X50180075.10												
0.75	18	ST		•	X50180075.9()												
0.75	20	AL		•	X50200075.10												
0.75	22	AL		•	X50220075.10												
0.75	23	AL		•	X50230075.10												
0.75	23	MS	1000		X50230075.6()												
0.75	24	AL		•	X50240075.10												
0.75	24	ST		•	X50240075.9()												
0.75	25	AL		•	X50250075.10												
0.75	26.5	AL	1000		X50265075.10												
0.75	30	AL		•	X50300075.10												
0.75	35	AL		•	X50350075.10												
0.75	40	AL	200		X50400075.10												
0.75	43	AL	200		X50430075.10												
0.75	50	AL	200		X50500075.10												

Andere Abmessungen auf Anfrage

Autres dimensions sur demande

Further dimensions on request

Distanzhülsen

Aluminium
Messing
Stahl
für Bolzen M4 - M8

Werkstoff:

AL = Aluminium
MS = Messing
ST = Stahl

Oberflächenbehandlung: Code
bl = blank (0)
ag = versilbert (1)
ni = vernickelt (5)
sn = verzinkt (8)
zn = verzinkt (9)

Bestellbeispiel:
Exemple de commande:
Example of order:

X50030035.60
(X5.0 x 0.35 x 3.0 MS bl)

Entretoises

aluminium
laiton
acier
pour borne M4 - M8

Matière:

AL = aluminium
MS = laiton
ST = acier

Traitements de surface: Code
bl = brut (0)
ag = argenté (1)
ni = nickelé (5)
sn = étamé (8)
zn = zingué (9)

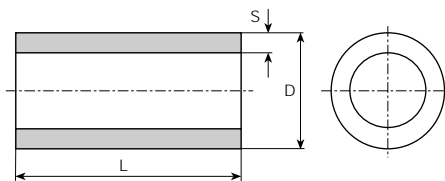
Spacer sleeves

aluminium
brass
steel
for stud M4 - M8

Material:

AL = aluminium
MS = brass
ST = steel

Surface-plating: Code
bl = clean (0)
ag = silver-plated (1)
ni = nickel-plated (5)
sn = tin-plated (8)
zn = zinc-plated (9)



für Bolzen pour borne for stud	øD mm	S mm	L mm	Werkstoff Matière Material	Stand.-Packg.		Artikel-Nr. Numéro d'article Part-No.		für Bolzen pour borne for stud	øD mm	S mm	L mm	Werkstoff Matière Material	Stand.-Packg.		Artikel-Nr. Numéro d'article Part-No.
					2000	5000								2000	5000	
M4	5	0.35	3	MS	1000	•	X50030035.6()		M4	6	0.9	11.7	AL	500	•	X60117090.10
		0.5	4	MS			X60120075.6()									
		0.5	6	AL			X60120075.9()									
		0.5	10	AL			X60120090.10									
		0.5	14	AL			X60130075.9()									
M4	6	0.9	1.5	AL	1000	•	X60015090.10		M4	6	0.75	12	MS	500	•	X60140075.9()
		0.75	2	ST			X60140090.10									
		0.9	2	AL			X60150075.9()									
		0.9	2.5	AL			X60150090.10									
		0.9	2.6	AL			X60160075.9()									
		0.75	3	ST			X60025090.10									
		0.9	3	AL			X60026090.10									
		1.0	3	MS			X60030075.9()									
		0.9	3.5	AL			X60030090.10									
		1.0	3.5	MS			X60030100.6()									
		1.0	3.5	ST			X60035090.10									
		0.75	4	MS			X60035090.10									
		0.75	4	ST			X60040075.6()									
		0.9	4	AL			X60040075.9()									
		1.0	4	MS			X60040090.10									
		1.0	4.5	MS			X60040100.6()									
		1.0	4.5	ST			X60045100.6()									
		0.75	5	ST			X60045100.9()									
		0.9	5	AL			X60050075.9()									
		1.0	5	MS			X60050090.10									
		0.9	5.5	AL			X60050100.6()									
		1.0	5.5	ST			X60055090.10									
		0.75	6	ST			X60055100.9()									
		0.9	6	AL			X60060075.9()									
		1.0	6	MS			X60060090.10									
		0.9	6.5	AL			X60060100.6()									
		0.75	7	ST			X60065090.10									
		0.9	7	AL			X60070075.9()									
		0.75	7	AL			X60070090.10									
		0.9	8	ST			X60080075.9()									
		0.9	8	AL			X60080090.10									
		0.75	9	ST			X60080090.10									
		0.9	9	AL			X60090075.9()									
		0.75	10	ST			X60090090.10									
		0.9	10	AL			X60100075.9()									
0.75	11	ST	X60100090.10													
0.9	11	AL	X60110075.9()													
1.0	11	MS	X60110090.10													
							X60110100.6()		M4	7	1.0	2	AL		•	X70020100.10
									M4	7	1.4	3	AL		•	X70030140.10
									M4	7	1.35	3.5	AL	500	•	X70035135.10
									M4	7	1.4	4	AL		•	X70040140.10
									M4	7	1.4	5	AL		•	X70050140.10
									M4	7	1.35	5.2	AL	1000	•	X70052135.10
									M4	7	1.4	6	AL		•	X70060140.10
									M4	7	1.4	7	AL		•	X70070140.10

Andere Abmessungen auf Anfrage

Autres dimensions sur demande

Further dimensions on request

für Bolzen pour borne for stud	øD mm	S mm	L mm	Werkstoff Matière Material	Stand.-Packg.		Artikel-Nr. Numéro d'article Part-No.		für Bolzen pour borne for stud	øD mm	S mm	L mm	Werkstoff Matière Material	Stand.-Packg.		Artikel-Nr. Numéro d'article Part-No.	
					2000	5000								2000	5000		
M4	7	1.4	8	AL	•		X70080140.10		M5	8	1.2	22	ST	•		X80220120.9()	
		1.4	9	AL	•		X70090140.10				1.4	25	AL	•		X80250140.10	
		1.4	10	AL	•		X70100140.10				1.2	26	ST	500		X80260120.9()	
		1.35	10.2	AL	500		X70102135.10				1.4	26.5	AL	•		X80265140.10	
		1.4	11	AL	•		X70110140.10				1.4	28	AL	500		X80280140.10	
		1.4	12	AL	•		X70120140.10				1.4	30	AL	•		X80300140.10	
		1.4	13	AL	•		X70130140.10				1.2	30	ST	500		X80300120.9()	
		1.4	14	AL	•		X70140140.10				1.2	32	ST	500		X80320120.9()	
		1.4	15	AL	•		X70150140.10				1.4	35	AL	•		X80350140.10	
		1.4	16	AL	•		X70160140.10				1.4	38	AL	•		X80380140.10	
		1.4	16.5	AL	500		X70165140.10				1.2	38	ST	500		X80380120.9()	
		1.4	17	AL	•		X70170140.10				1.4	40	AL	•		X80400140.10	
		1.4	17.2	AL	500		X70172140.10				1.2	40	ST	500		X80400120.9()	
		1.0	18	AL	•		X70180100.10				1.2	80	ST	100		X80800120.9()	
		1.4	18	AL	•		X70180140.10				1.2	82	ST	100		X80820120.9()	
		1.4	20	AL	200		X70200140.10										
		1.4	22	AL	200		X70220140.10										
		1.4	25	AL	200		X70250140.10										
		1.4	30	AL	200		X70300140.10										
M4	8	1.6	5	ST	500		X80050160.9()		M6	8	1.0	3	AL	500		X80030100.10	
M5	6	0.5	5	AL	1000		X60050050.10		M6	10	1.8	3	ST	1000		X1000301809()	
		0.5	12	MS	•		X60120050.6()				1.8	4	ST	•		X1000401809()	
		0.5	12.7	MS	1000		X60127050.6()				1.8	5	ST	•		X1000501809()	
		0.48	15.5	MS	1000		X60155048.6()				1.8	6	ST	•		X1000601809()	
M5	7	1.0	5	AL	500		X70050100.10		1.8	7	ST	•		X1000701809()			
		1.0	5	MS	•		X70050100.6()		1.8	8	ST	•		X1000801809()			
		1.0	9	MS	•		X70090100.6()		1.8	9	ST	1000		X1000901809()			
		1.0	13	MS	•		X70130100.6()		1.8	10	ST	•		X1001001809()			
		1.0	15	MS	•		X70150100.6()		1.8	11	ST	1000		X1001101809()			
		1.0	16	MS	•		X70160100.6()		1.8	12	ST	•		X1001201809()			
									1.8	13	ST	•		X1001301809()			
									1.8	15	ST	•		X1001501809()			
									1.8	24	ST	•		X1002401809()			
									1.8	28	ST	•		X1002801809()			
M5	8	1.4	3.5	AL	•		X80035140.10		1.8	30	ST	100		X1003001809()			
		1.2	4	ST	•		X80040120.9()		1.8	35	ST	100		X1003501809()			
		1.4	4	AL	•		X80040140.10		1.8	45	ST	100		X1004501809()			
		1.4	4.5	AL	•		X80045140.10										
		1.2	5	ST	•		X80050120.9()		M8	10	0.8	6	ST	1000		X1000600809()	
		1.4	5	AL	•		X80050140.10										
		1.2	6	ST	•		X80060120.9()		M8	12	1.8	12	ST	500		X1201201809()	
		1.4	6	AL	•		X80060140.10		1.8	14	ST	1000		X1201401809()			
		1.2	6.5	ST	500		X80065120.9()										
		1.2	7	ST	•		X80070120.9()										
		1.4	7	AL	•		X80070140.10										
		1.2	8	ST	•		X80080120.9()										
		1.4	8	AL	•		X80080140.10										
		1.2	9	ST	•		X80090120.9()										
		1.4	9	AL	•		X80090140.10										
		1.4	9.5	AL	•		X80095140.10										
		1.2	10	ST	•		X80100120.9()										
		1.4	10	AL	•		X80100140.10										
		1.2	11	ST	•		X80110120.9()										
		1.2	12	ST	•		X80120120.9()										
		1.4	12	AL	•		X80120140.10										
		1.2	13	ST	•		X80130120.9()										
		1.2	14	ST	•		X80140120.9()										
		1.4	14	AL	•		X80140140.10										
		1.1	15	ST	500		X80150110.9()										
		1.2	15	ST	•		X80150120.9()										
		1.4	15	AL	•		X80150140.10										
		1.2	16	ST	•		X80160120.9()										
		1.4	16	AL	•		X80160140.10										
1.2	17	ST	•		X80170120.9()												
1.2	18	ST	•		X80180120.9()												
1.4	18	AL	•		X80180140.10												
1.4	19	AL	•		X80190140.10												
1.2	20	ST	•		X80200120.9()												
1.4	20	AL	•		X80200140.10												
1.2	21	ST	•		X80210120.9()												

Andere Abmessungen auf Anfrage

Autres dimensions sur demande

Further dimensions on request

Rohrabschnitte

Kupfer
Messing
Stahl

Werkstoff:

CU = Kupfer
MS = Messing
ST = Stahl

Oberflächenbehandlung: Code
 bl = blank (0)
 ag = versilbert (1)
 ni = vernickelt (5)
 sn = verzinkt (8)
 zn = verzinkt (9)

Bestellbeispiel:
Exemple de commande:
Example of order:

X12080020.68
(X1.2 x 0.2 x 8.0 MS sn)

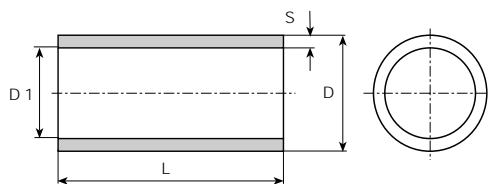
Pièces tubulaires cylindriques

cuivre
laiton
acier

Matériau:

CU = cuivre
MS = laiton
ST = acier

Traitements de surface: Code
 bl = brut (0)
 ag = argenté (1)
 ni = nickelé (5)
 sn = étamé (8)
 zn = zingué (9)



Cylindrical tubular pieces

copper
brass
steel

Material:

CU = copper
MS = brass
ST = steel

Surface-plating: Code
 bl = clean (0)
 ag = silver-plated (1)
 ni = nickel-plated (5)
 sn = tin-plated (8)
 zn = zinc-plated (9)

øD mm	S mm	L mm	Werkstoff Matière Material	Stand.-Packg.		Artikel-Nr. Numéro d'article Part-No.	øD mm	S mm	L mm	Werkstoff Matière Material	Stand.-Packg.		Artikel-Nr. Numéro d'article Part-No.		
				2000	5000						2000	5000			
1.2	0.2	8	MS		•	X12080020.6()	2.5	0.2	2	MS		•	X25020020.6()		
1.4	0.2	6	MS		•	X14060020.6()		0.2	3	MS		•	X25030020.6()		
	0.2	8	MS		•	X14080020.6()		0.25	3	ST		•	X25030025.9()		
	0.2	10	MS		•	X14100020.6()		0.2	5	MS		•	X25050020.6()		
1.5	0.25	2	MS		•	X15020025.6()		0.25	5	MS		•	X25050025.6()		
	0.25	3	MS		•	X15030025.6()		0.25	5	ST		•	X25050025.9()		
	0.25	4	MS		•	X15040025.6()		0.2	6	MS		•	X25065020.6()		
	0.25	5	MS		•	X15050025.6()		0.2	8	MS		•	X25080020.6()		
	0.2	6	MS		•	X15060020.6()		0.4	9	MS		•	X25090040.6()		
	0.2	7	MS		•	X15070020.6()		0.2	12	MS		•	X25120020.6()		
	0.2	12	MS		•	X15120025.6()		0.5	30	CU	1000		•	X25300050.4()	
							2.8	0.2	1	MS		•		X28010020.6()	
1.6	0.15	3	MS		•	X16030015.6()	3	0.25	7	MS		•	X30070025.6()		
	0.1	5	MS		•	X16050010.6()		0.7	8.2	CU		•	X30082070.4()		
	0.1	22	MS	4000		X16220010.6()		0.3	10	MS		•	X30100030.6()		
	0.1	24	MS	4000		X16240010.6()		0.5	51.5	MS	1000		•	X30515050.6()	
1.7	0.2	4	CU		•	X17040020.4()	3.5	0.25	12	MS		•	X35120025.6()		
	0.2	5	MS		•	X17050020.6()									
	0.2	8	MS		•	X17080020.6()	3.8	0.3	6.3	MS		•	X38063030.6()		
1.9	0.2	5	MS		•	X19050020.6()	4	0.3	3	MS		•	X40030030.6()		
								0.25	12	MS	1000		•	X40120025.6()	
2	0.4	1.5	MS		•	X20015040.6()		0.3	12	MS	1000		•	X40120030.6()	
	0.3	3	ST		•	X20030030.9()									
	0.25	5	MS		•	X20050025.6()	5	0.5	12	MS	1000		•	X50120050.6()	
	0.5	6	MS		•	X20060050.6()		0.4	22	CU		•		X50220040.4()	
	0.2	7	MS		•	X20070020.6()									
	0.4	8	MS		•	X20080040.6()	5.2	0.2	3	MS	1000		•	X52030020.6()	
	0.5	9	MS		•	X20090050.6()									
	0.5	9.5	MS		•	X20095050.6()	5.5	0.25	3	MS		•		X55030025.6()	
	0.5	12.5	MS		•	X20125050.6()		0.25	8	MS	1000		•	X55080025.6()	
	0.5	20	MS		•	X20200050.6()									
2.2	0.4	34	MS		•	X20340040.6()	6	0.25	2	MS		•		X60020025.6()	
	0.5	48	MS	500		X20480050.6()		0.25	15	MS	500		•		X60150025.6()
							9	0.3	121	MS	50		•		X9012100306()
	0.2	5	MS		•	X22050020.6()	9.3	0.25	2.5	MS		•		X93025025.6()	
	0.2	10	MS		•	X22100020.6()									

Andere Abmessungen auf Anfrage

Autres dimensions sur demande

Further dimensions on request

Crimphülsen

CU = Kupfer
MS = Messing

Douilles à sertir

CU = cuivre
MS = laiton

Ferrules

CU = copper
MS = brass



Crimphülsen

CU = Kupfer
MS = Messing

Douilles à sertir

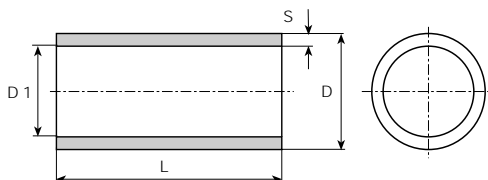
CU = cuivre
MS = laiton

Ferrules

CU = copper
MS = brass

Bestellbeispiel:
Exemple de commande:
Example of order:

X21035030.40
(X2.1x0.3x3.5 CU bl)



øD mm	S mm	L mm	øD1 mm	Werkstoff Matière Material	Stand.-Packg.		Artikel-Nr. Numéro d'article Part-No.	øD mm	S mm	L mm	øD1 mm	Werkstoff Matière Material	Stand.-Packg.		Artikel-Nr. Numéro d'article Part-No.
					2000	5000							2000	5000	
2.1	0.3	3.5	1.5	CU		•	X21035030.40	4.04	0.74	4.5	2.56	CU		•	X40045074.40
2.5	0.2	6.5	2.1	MS		•	X25065020.60	4.04	0.74	5.5	2.56	CU		•	X40055074.40
3.2	0.3	2.9	2.6	CU		•	X32029030.40	4.04	0.74	7	2.56	CU		•	X40070074.40
3.2	0.31	9.5	2.58	CU		•	X32095031.40	4.2	0.29	7	3.62	CU		•	X42070029.40
3.2	0.34	7.8	2.52	CU		•	X32078034.40	4.2	0.47	9	3.26	CU		•	X42090047.40
3.2	0.49	4.8	2.22	CU		•	X32048049.40	4.25	0.3	10	3.65	CU		•	X42100030.40
3.2	0.49	7.8	2.22	CU		•	X32078049.40	4.3	0.35	7.8	3.6	CU		•	X43078035.40
3.2	0.5	7	2.2	CU		•	X32070050.40	4.3	0.35	9	3.6	CU		•	X43090035.40
3.2	0.5	9	2.2	CU		•	X32090050.40	4.3	0.35	10.5	3.6	CU		•	X43105035.40
3.6	0.33	7	2.94	CU		•	X36070033.40	4.3	0.46	11	3.38	CU		•	X43110046.40
3.6	0.33	9	2.94	CU		•	X36090033.40	4.4	0.2	9	4	CU		•	X44090020.40
3.6	0.33	10	2.94	CU		•	X36100033.40	4.44	0.48	6.3	3.48	MS		•	X44063048.60
3.61	0.26	9.5	3.09	CU		•	X36095026.40	4.5	0.3	7	3.9	MS		•	X45090030.60
3.8	0.3	5.2	3.2	MS		•	X38052030.60	4.5	0.47	9	3.56	CU		•	X45090047.40
3.8	0.3	8	3.2	CU		•	X38080030.40	4.5	0.47	10.7	3.56	CU		•	X45107047.40
3.8	0.3	9.5	3.2	CU		•	X38095030.40	4.5	0.5	9	3.5	CU		•	X45090050.40
3.8	0.33	8	3.14	CU		•	X38080033.40	4.5	0.5	9	3.5	MS		•	X45090050.60
3.8	0.33	9	3.14	CU		•	X38090033.40	4.5	0.5	12	3.5	CU		•	X45120050.40
3.8	0.43	11	2.94	CU		•	X38110043.40	4.59	0.5	9	3.59	CU		•	X46090050.40
3.84	0.47	9	2.9	CU		•	X38090047.40	4.6	0.36	6.3	3.88	MS		•	X46063036.60
3.85	0.31	7.8	3.23	CU		•	X38078031.40	4.7	0.38	9	3.94	CU		•	X47090038.40
3.85	0.31	9	3.23	CU		•	X38090031.40	5	0.25	9	4.5	MS		•	X50090025.60
3.85	0.31	10.5	3.23	CU		•	X38105031.40	5	0.34	10.5	4.32	CU		•	X50105034.40
3.86	0.3	6.5	3.26	CU		•	X38065030.40	5	0.4	10.5	4.2	CU		•	X50105040.40
3.88	0.28	10	3.32	CU		•	X38100028.40	5	0.42	7	4.16	CU		•	X50070042.40
3.9	0.2	8	3.5	CU		•	X39080020.40	5	0.42	9	4.16	CU		•	X50090042.40
3.92	0.29	9	3.34	CU		•	X39090029.40	5	0.42	10	4.16	CU		•	X50100042.40
3.94	0.41	12.8	3.12	MS		•	X39128041.60	5	0.5	11	4	CU		•	X50110050.40
4	0.28	7	3.44	CU		•	X40070028.40	5.08	0.48	9	4.12	CU		•	X51090048.40
4	0.35	7	3.3	CU		•	X40070035.40	5.1	0.5	12	4.1	CU		•	X51120050.40
4	0.35	9	3.3	CU		•	X40090035.40	5.12	0.42	9	4.28	CU		•	X51090042.40
4	0.37	13	3.26	CU		•	X40130037.40	5.12	0.42	10	4.28	CU		•	X51100042.40
4	0.45	7	3.1	MS		•	X40070045.60	5.12	0.42	11	4.28	CU		•	X51110042.40
4	0.55	5.5	2.9	CU		•	X40055055.40	5.2	0.52	9	4.16	CU		•	X52090052.40
4	0.55	7	2.9	CU		•	X40070055.40	5.23	0.67	9	3.89	CU		•	X52090067.40
4	0.7	5.5	2.6	CU		•	X40055070.40	5.3	0.39	10.5	4.52	CU		•	X53105039.40
4	0.7	7	2.6	CU		•	X40070070.40	5.3	0.55	9	4.2	CU		•	X53090055.40
4.03	0.73	10	2.57	CU		•	X40100073.40	5.34	0.47	9	4.4	CU		•	X53090047.40
4.04	0.34	5.5	3.36	CU		•	X40055034.40	5.4	0.42	10	4.56	CU		•	X54100042.40
4.04	0.34	7	3.36	CU		•	X40070034.40	5.6	0.4	6.5	4.8	CU		•	X56065040.40
4.04	0.34	10	3.36	CU		•	X40100034.40	5.89	0.64	4	4.61	CU		•	X59040064.40
4.04	0.36	12.8	3.32	MS		•	X40128036.60	5.89	0.64	6	4.61	CU		•	X59060064.40
4.04	0.4	6.3	3.24	CU		•	X40063040.40	5.89	0.64	7	4.61	CU		•	X59070064.40
4.04	0.46	7	3.12	CU		•	X40070046.40	5.9	0.55	7	4.8	MS		•	X59070055.60
4.04	0.46	8.2	3.12	CU		•	X40082046.40	5.9	0.65	10	4.6	CU		•	X59100065.40
4.04	0.46	10	3.12	CU		•	X40100046.40	6	0.34	9	5.32	CU		•	X60090034.40
4.04	0.54	4	2.96	CU		•	X40040054.40	6	0.39	18	5.22	CU		•	X60180039.40
4.04	0.54	4.5	2.96	CU		•	X40045054.40	6.1	0.45	10.5	5.2	CU		•	X61105045.40
4.04	0.54	6	2.96	CU		•	X40060054.40	6.1	0.45	13.5	5.2	CU		•	X61135045.40
4.04	0.54	7	2.96	CU		•	X40070054.40	6.1	0.45	15	5.2	CU		•	X61150045.40
4.04	0.54	10	2.96	CU		•	X40100054.40	6.2	0.2	10	5.8	CU		•	X62100020.40
4.04	0.54	13	2.96	CU		•	X40130054.40	6.2	0.47	8	5.26	CU		•	X62080047.40

Andere Abmessungen auf Anfrage

Autres dimensions sur demande

Further dimensions on request

Crimphülsen

CU = Kupfer
MS = Messing

Douilles à sertir

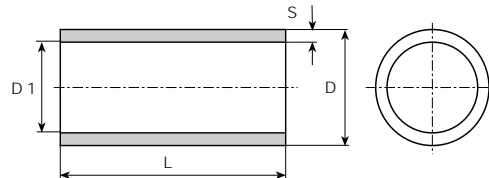
CU = cuivre
MS = laiton

Ferrules

CU = copper
MS = brass

Bestellbeispiel:
Exemple de commande:
Example of order:

X62090056.40
(X6.2x0.56x9.0 CU bl)



øD mm	S mm	L mm	øD1 mm	Werkstoff Matière Material	Stand.-Packg.		Artikel-Nr. Numéro d'article Part-No.		øD mm	S mm	L mm	øD1 mm	Werkstoff Matière Material	Stand.-Packg.		Artikel-Nr. Numéro d'article Part-No.
					2000	5000								2000	5000	
6.2	0.56	9	5.08	CU		•	X62090056.40		9.5	0.6	13.5	8.3	CU	•		X95135060.40
6.2	0.56	12	5.08	CU		•	X62120056.40		9.5	0.72	4	8.06	CU	•	•	X95040072.40
6.2	0.62	9	4.96	CU		•	X62090062.40		9.55	0.72	13.5	8.11	CU	•		X95135072.40
6.2	0.65	9	4.9	CU		•	X62090065.40		9.8	0.58	13.5	8.64	CU	•		X98135058.40
6.2	0.7	9	4.8	CU		•	X62090070.40		10.14	0.49	13.5	9.16	CU	•		X10113504940
6.22	0.5	6.5	5.22	CU		•	X62065050.40		10.34	0.45	9.5	9.44	MS	•		X10309504560
6.32	0.56	10.5	5.2	CU		•	X63105056.40		10.65	0.63	17.5	9.39	CU	•		X10617506340
6.33	0.41	13.5	5.51	CU		•	X63135041.40		11	0.5	25	10	CU	•		X11025005040
6.35	0.4	6	5.55	CU		•	X63060040.40		11.02	0.51	7	10	MS	•		X11007005160
6.35	0.4	9.8	5.55	CU		•	X63098040.40		11.05	0.5	15.3	10.05	CU	•		X11015305040
6.38	0.4	12	5.58	CU		•	X63120040.40		11.5	0.5	9	10.5	CU	•		X11509005040
6.38	0.43	12.7	5.52	CU		•	X63127043.40		12.02	0.45	7.1	11.12	MS	•		X12007104560
6.4	0.42	12	5.56	CU		•	X64120042.40		12.02	0.51	7	11	MS	•		X12007005160
6.4	0.5	8	5.4	CU		•	X64080050.40		12.25	0.65	15.5	10.95	CU	•		X12215506540
6.4	0.5	9.5	5.4	CU		•	X64095050.40		12.3	0.45	15.5	11.4	CU	•		X12315504540
6.4	0.5	12	5.4	CU		•	X64120050.40		12.3	0.5	25	11.3	CU	•		X12325005040
6.4	0.5	13	5.4	CU		•	X64130050.40		12.44	0.49	15.5	11.46	MS	•		X12415504960
6.4	0.5	13.5	5.4	CU		•	X64135050.40		12.5	0.9	15.5	10.7	CU	•		X12515509040
6.5	0.4	6.5	5.7	CU		•	X65065040.40		12.56	0.71	15.5	11.14	CU	•		X12515507140
6.5	0.4	10	5.7	CU		•	X65100040.40		14.5	0.67	22	13.16	CU	1000		X14522006740
6.54	0.54	4	5.46	CU		•	X65040054.40									
6.54	0.54	6	5.46	CU		•	X65060054.40									
6.54	0.54	6.5	5.46	CU		•	X65065054.40									
6.54	0.54	8.3	5.46	CU		•	X65083054.40									
6.54	0.54	10	5.46	CU		•	X65100054.40									
6.54	0.54	13.5	5.46	CU		•	X65135054.40									
6.6	0.37	13.5	5.86	MS		•	X66135037.60									
6.63	0.42	13.5	5.79	CU		•	X66135042.40									
7	0.25	2.5	6.5	CU		•	X70025025.40									
7.5	0.47	9.5	6.56	MS		•	X75095047.60									
7.5	0.5	12	6.5	CU		•	X75120050.40									
7.5	0.6	9	6.3	CU		•	X75090060.40									
7.6	0.46	9.5	6.68	MS		•	X76095046.60									
7.64	0.62	11	6.4	CU		•	X76110062.40									
7.64	0.62	13.5	6.4	CU		•	X76135062.40									
7.78	0.44	12	6.9	CU		•	X78120044.40									
7.78	0.63	12	6.52	CU		•	X78120063.40									
7.84	0.44	13.5	6.96	CU		•	X78135044.40									
7.9	0.5	12	6.9	CU		•	X79120050.40									
7.9	0.52	12	6.86	CU		•	X79120052.40									
8	0.5	2.6	7	MS		•	X80026050.60									
8	0.5	12	7	CU		•	X80120050.40									
8.15	0.55	12.7	7.05	CU		•	X81127055.40									
8.4	0.55	7	7.3	MS		•	X84070055.60									
8.5	0.4	12	7.7	CU		•	X85120040.40									
9	0.7	9	7.6	MS		•	X90090070.60									
9.35	0.7	12	7.95	CU		•	X93120070.40									
9.4	0.6	12	8.2	CU		•	X94120060.40									
9.5	0.35	12	8.8	CU		•	X95120035.40									

Andere Abmessungen auf Anfrage

Autres dimensions sur demande

Further dimensions on request

Isolier-Distanzrollen

Polystyrol + Polyamid
für Bolzen M3 - M6

Werkstoff:

PS = Polystyrol, schwarz
PA = Polyamid, schwarz (Nylon)

Temperaturbeständigkeit:

PS - 10°C bis + 80°C
PA - 40°C bis +110°C

Bestellbeispiel:

Exemple de commande:
Example of order:

X05010032.PS
(X5.0 x 3.2 x 10 PS)

Entretoises isolantes

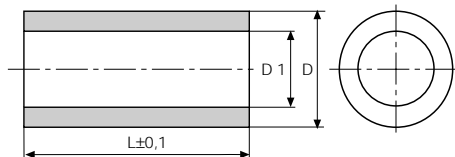
polystyrène + polyamide
pour borne M3 - M6

Matière:

PS = polystyrène, noire
PA = polyamide, noire (nylon)

Résistant à une température de:

PS - 10°C à + 80°C
PA - 40°C à +110°C



Insulating spacer sleeves

polystyrene + polyamid
for stud M3 - M6

Material:

PS = polystyrene, black
PA = polyamid, black (nylon)

Temperature range:

PS - 10°C up to + 80°C
PA - 40°C up to +110°C

für Bolzen pour borne for stud	øD mm	øD1 mm	L mm	Stand.-Packg. 500	Artikel-Nr. Numéro d'article Part-No.	für Bolzen pour borne for stud	øD mm	øD1 mm	L mm	Stand.-Packg. 500	Artikel-Nr. Numéro d'article Part-No.
M3	5	3.2	10	•	X05010032.PS	M4	8	4.2	20	•	X08020042.PA
M3	6	3.2	4.5	•	X06004532.PA	M4	8	4.5	3	•	X08003045.PS
		3.2	6.4	•	X06006432.PA			4.5	4	•	X08004045.PS
		3.2	7	•	X06007032.PA			4.5	5	•	X08005045.PS
		3.2	7.4	•	X06007432.PA			4.5	6	•	X08006045.PS
		3.2	8	•	X06008032.PA			4.5	7	•	X08007045.PS
M3	7	3.4	15.5	•	X07015534.PA			4.5	8	•	X08008045.PS
M3	7	3.6	3	•	X07003036.PS			4.5	9	•	X08009045.PS
		3.6	4	•	X07004036.PS			4.5	10	•	X08010045.PS
		3.6	5	•	X07005036.PS			4.5	11	•	X08011045.PS
		3.6	6	•	X07006036.PS			4.5	12	•	X08012045.PS
		3.6	6.5	•	X07006536.PS			4.5	13	•	X08013045.PS
		3.6	7	•	X07007036.PS			4.5	14	•	X08014045.PS
		3.6	8	•	X07008036.PS			4.5	15	•	X08015045.PS
		3.6	9	•	X07009036.PS			4.5	20	•	X08020045.PS
		3.6	10	•	X07010036.PS			4.5	25	•	X08025045.PS
		3.6	11	•	X07011036.PS			4.5	30	•	X08030045.PS
		3.6	12	•	X07012036.PS	M5	10	5.5	3	•	X10003055.PS
		3.6	13	•	X07013036.PS			5.5	5	•	X10005055.PS
		3.6	14	•	X07014036.PS			5.5	10	•	X10010055.PS
		3.6	15	•	X07015036.PS			5.5	15	•	X10015055.PS
		3.6	16	•	X07016036.PS			5.5	20	•	X10020055.PS
		3.6	17	•	X07017036.PS			5.5	25	•	X10025055.PS
		3.6	18	•	X07018036.PS			5.5	30	•	X10030055.PS
		3.6	19	•	X07019036.PS			5.5	35	•	X10035055.PS
		3.6	20	•	X07020036.PS	M6	10	6.2	5	•	X10005062.PS
		3.6	25	•	X07025036.PS			6.2	10	•	X10010062.PS
		3.6	27	•	X07027036.PS			6.2	15	•	X10015062.PS
		3.6	30	•	X07030036.PS			6.2	20	•	X10020062.PS
		3.6	35	•	X07035036.PS			6.2	25	•	X10025062.PS
								6.2	30	•	X10030062.PS
								6.2	35	•	X10035062.PS

Andere Abmessungen auf Anfrage

Autres dimensions sur demande

Further dimensions on request

Isolier-Distanzrollen

Polycarbonat
für Bolzen M3 - M5

Werkstoff:

PC = Polycarbonat, grau

Temperaturbeständigkeit:

- 50°C bis +135°C

Entretoises isolantes

polycarbonate
pour borne M3 - M5

Matériau:

PC = polycarbonate, gris

Résistant à une température de:

- 50°C à +135°C

Insulating spacer sleeves

polycarbonate
for stud M3 - M5

Material:

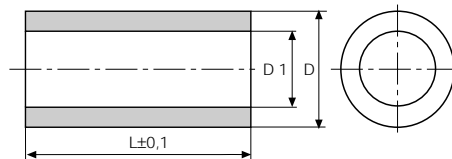
PC = polycarbonate, grey

Temperature range:

- 50°C up to +135°C

Bestellbeispiel:
Exemple de commande:
Example of order:

X07003036.PC
(X7.0 x 3.6 x 3.0 PC)



für Bolzen pour borne for stud	øD mm	øD1 mm	L mm	Stand.-Packg. 500	Artikel-Nr. Numéro d'article Part-No.	für Bolzen pour borne for stud	øD mm	øD1 mm	L mm	Stand.-Packg. 500	Artikel-Nr. Numéro d'article Part-No.																						
M3	7	3.6	3	•	X07003036.PC	M4	7	4.1	10	•	X07010041.PC																						
		3.6	5	•	X07005036.PC			M4	8	4.5	3	•	X08003045.PC																				
		3.6	6	•	X07006036.PC					M4	8	4.5	5	•	X08005045.PC																		
		3.6	7	•	X07007036.PC							M4	8	4.5	8	•	X08008045.PC																
		3.6	8	•	X07008036.PC									M4	8	4.5	10	•	X08010045.PC														
		3.6	10	•	X07010036.PC											M4	8	4.5	15	•	X08015045.PC												
		3.6	15	•	X07015036.PC													M4	8	4.5	20	•	X08020045.PC										
		3.6	18	•	X07018036.PC															M4	8	4.5	25	200	X08025045.PC								
		3.6	20	•	X07020036.PC																	M4	8	4.5	30	200	X08030045.PC						
		3.6	25	200	X07025036.PC																			M4	8	4.5	35	200	X08035045.PC				
		3.6	28.8	200	X07028836.PC																					M5	10	5.5	3	•	X10003055.PC		
		3.6	30	•	X07030036.PC																							M5	10	5.5	5	•	X10005055.PC
		3.6	35	200	X07035036.PC																									M5	10	5.5	10
				M5	10	5.5	15																									200	X10015055.PC
						M5	10	5.5	20																							200	X10020055.PC
								M5	10	5.5	25																					200	X10025055.PC
										M5	10	5.5	30																			200	X10030055.PC
												M5	10	5.5	35																	200	X10035055.PC

Andere Abmessungen auf Anfrage

Autres dimensions sur demande

Further dimensions on request