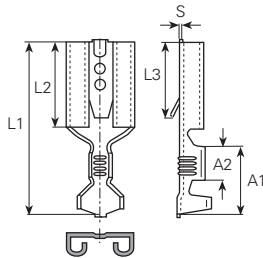


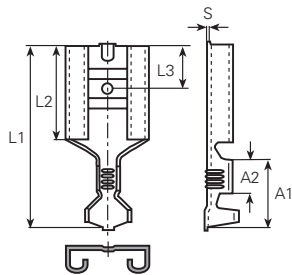
Werkstoff/Matière/Material
 .2 = Bronze/bronze
 .6 = Messing/laiton/brass

■ = Oberflächen/Surface/Surface-plating
 Seite/page/page 5.011

Strombelastbarkeit / Intensité admissible / Current carrying capacity:
 0.5 – 1.0 mm² / 10A max.
 1.5 – 2.5 mm² / 15A max.
 4.0 – 6.0 mm² / 25A max



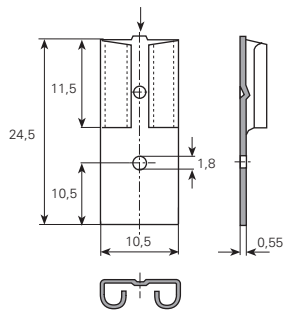
mm ²	AWG	Größe Grandeur Size	Artikelnummer Numéro d'article Part-No.	DIN	L1 mm	L2 mm	L3 mm	A1 mm	A2 mm	S mm	Werkzeuge Outils Toolings
2.5 (2x1)	14 (2x18)	7.7 x 0.8	3835s.2 ■	46340/T5	23	9.5	9.5	9.5	4	0.45	3975c, 3983p.4, 3984a, 3988n



mm ²	AWG	Größe Grandeur Size	Artikelnummer Numéro d'article Part-No.	DIN	L1 mm	L2 mm	L3 mm	A1 mm	A2 mm	S mm	Werkzeuge Outils Toolings
4-6	12-10	9.5 x 1.2	3835t.6 ■	46247/T4	25.2	11.5	7.9	9	4.4	0.45	3975c, 3983p.4, 3984a, 3988n

Werkstoff/Matière/Material
 .6 = Messing/laiton/brass

■ = Oberflächen/Surface/Surface-plating
 Seite/page/page 5.011



Artikelnummer
 Numéro d'article
 Part-No. **3835u.6**■
 Größe
 Grandeur
 Size 9.5 x 1.2