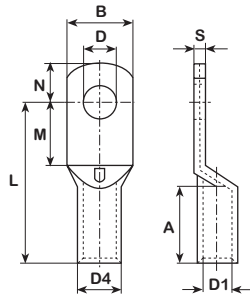


Rohrkabelschuhe ohne Isolation

Cosses de câble

Tubular terminals

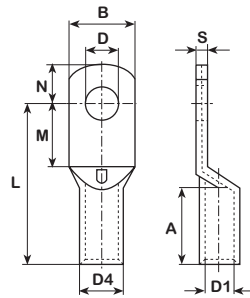


Werkstoff:
E-CU sn = Elektrolytkupfer verzinkt

Matière:
E-CU sn = cuivre électrolytique étamé

Material:
E-CU sn = tin-plated electrolytic copper

mm ²	AWG	für Bolzen pour borne for stud mm	Artikelnummer Numéro d'article Part-No.	øD mm	øD1 mm	B mm	L mm	N mm	M mm	øD4 mm	A mm	S mm	Werkzeuge Outils Toolings	
0.5-0.75	22-20	M3	3392a	3.2	1.3	6	12	3.4	4	2.8	6	0.8	3975d, 3980n, 3983p.2, 3984e	
	22-20	M4	3394a	4.3	1.3	6.5	13	4	5	2.8	6	0.7		
	22-20	M5	3396a	5.3	1.3	7.5	14	5	6	2.8	6	0.7		
1-1.5	18-16	M3	3397a	3.2	1.8	6	12	4	4	3.3	5.5	1		
	18-16	M4	3398a	4.3	1.8	6.5	13	4	5	3.3	5.5	0.9		
	18-16	M5	3399	5.3	1.8	7.5	14	4	6	3.3	5.5	0.9		
	18-16	M6	3400a	6.4	1.8	9	14	5	6	3.3	5.5	0.6		
2.5	14	M3.5	3401a	3.7	2.3	6.5	13	4	4	4	6	1.2		
	14	M4	3402a	4.3	2.3	7.5	14	4	5	4	6	1.1		
	14	M5	3403a	5.3	2.3	8.5	14	4.5	5.5	4	6	0.9		
	14	M6	3405a	6.4	2.3	9	15	5	6	4	6	0.9		
	14	M8	3406a	8.4	2.3	12	18	8	9	4	6	0.6		
4	12	M4	3402b	4.3	3	8.5	17	5	6	5	8	1.5		3980n, 3984f
	12	M5	3403b	5.3	3	9	17	5	6	5	8	1.3		
	12	M6	3405b	6.5	3	10	19	6	14	5	8	1.3		
	12	M8	3406b	8.5	3	14	22	7.5	11.5	5	8	0.8		
6	10	M4	3408a	4.3	3.5	8	17	4	5	5.5	9	1.5	3980n, 3982e, 3984f	
	10	M5	3409a	5.3	3.5	9	19	7	8	5.5	9	2.4		
	10	M6	3410a	6.4	3.5	11	19.5	6	7	5.5	9	1		
	10	M8	3411a	8.4	3.5	14	21	8	9	5.5	9	0.8		
	10	M10	3412a	10.5	3.5	16	23	12	12	5.5	9	1.2		
10	8	M4	3414a	4.3	4.5	12	22	6	6	7	10.5	1.9	3980p, 3981an, 3982cn, 3982e	
	8	M5	3415a	5.3	4.5	12	22	6	6	7	10.5	1.9		
	8	M6	3416a	6.4	4.5	12	23	7	8	7	10.5	1.9		
	8	M8	3417a	8.4	4.5	15	25.5	10	10	7	10.5	1.5		
	8	M10	3418a	10.5	4.5	18	27.5	12	12	7	10.5	1.2		
	8	M12	3419a	13.2	4.5	20	28.5	13	13	7	10.5	1.2		
16	6	M5	3420a	5.3	5.5	12	24.5	6	6	8.5	12	2.8		
	6	M6	3421a	6.4	5.5	12	25.5	7.5	7	8.5	12	2.9		
	6	M8	3422a	8.4	5.5	15	28	10	9	8.5	12	2.2		
	6	M10	3423a	10.5	5.5	18	30	12	11	8.5	12	1.7		
	6	M12	3424a	13.2	5.5	20	31	12	14	8.5	12	1.5		



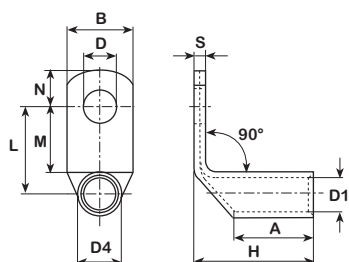
Werkstoff:
E-CU sn = Elektrolytkupfer verzinkt

Matière:
E-CU sn = cuivre électrolytique étamé

Material:
E-CU sn = tin-plated electrolytic copper

mm ²	AWG	für Bolzen pour borne for stud mm	Artikelnummer Numéro d'article Part-No.	øD mm	øD1 mm	B mm	L mm	N mm	M mm	øD4 mm	A mm	S mm	Werkzeuge Outils Toolings
25	4	M5	3425a	5.3	7	14	26.5	7	8	10	13	2.9	3981an, 3982cn, 3982e, 3982g
	4	M6	3426a	6.4	7	14	27.5	7.5	7.5	10	13	3	
	4	M8	3427a	8.4	7	15	30	10	11	10	13	2.5	
	4	M10	3428a	10.5	7	18	32	12	12	10	13	2.2	
	4	M12	3429a	13.2	7	20	33	13	14	10	13	2	
35	2	M5	3430a	5.3	8.5	17	30	7.4	8	12	15.5	3.5	
	2	M6	3431a	6.4	8.5	17	31	7	7	12	15.5	3.4	
	2	M8	3432a	8.4	8.5	17	33.5	10	10	12	15.5	3.4	
	2	M10	3433a	10.5	8.5	18	35.5	12	12	12	15.5	3.2	
	2	M12	3434a	13.2	8.5	21	36.5	13	13	12	15.5	2.7	
50	1/0	M6	3436a	6.4	10	20	37.5	10	10	14	18.5	4	
	1/0	M8	3437a	8.4	10	20	37.5	10	10	14	18.5	4	
	1/0	M10	3438a	10.5	10	20	39.5	12	12	14	18.5	3.8	
	1/0	M12	3439a	13.2	10	21	40.5	13	12	14	18.5	3.6	
	1/0	M14	3440a	15	10	21	41.5	14	16	14	18.5	3.3	
	1/0	M16	3441a	17	10	26	45.5	16	17	14	18.5	2.5	
70	2/0	M6	3444a	6.4	12	24	43	10	12	16.5	20	4.5	
	2/0	M8	3445a	8.4	12	24	43	10	10	16.5	20	4.3	
	2/0	M10	3446a	10.5	12	24	45	12	11	16.5	20	4.3	
	2/0	M12	3447a	13.2	12	24	46	13	12	16.5	20	4.4	
	2/0	M14	3448a	15	12	24	47	14	14	16.5	20	4.3	
	2/0	M16	3449a	17	12	30	51	16	18	16.5	20	3.6	
95	3/0	M8	3457a	8.4	13.5	26	47	10	10	18	24.5	4.3	
	3/0	M10	3458a	10.5	13.5	26	49	12	12	18	24.5	4.5	
	3/0	M12	3459a	13.2	13.5	26	50	13	13	18	24.5	4.3	
	3/0	M14	3460a	15	13.5	26	51	14	14	18	24.5	4.5	
	3/0	M16	3461a	17	13.5	30	55	16	17	18	24.5	3.7	
120	250 MCM	M8	3463a	8.4	15	29	53.5	15	15	19.5	25.5	4.6	
	250 MCM	M10	3464a	10.5	15	29	53.5	14	13	19.5	25.5	4.2	
	250 MCM	M12	3465a	13.2	15	29	53.5	14	14	19.5	25.5	4.2	
	250 MCM	M14	3466a	15	15	29	54.5	15	15	19.5	25.5	4.4	
	250 MCM	M16	3467a	17	15	31	57.5	16	17	19.5	25.5	3.8	
	250 MCM	M20	3468a	21	15	36	61.5	21	21	19.5	25.5	3.7	

mm ²	AWG	für Bolzen pour borne for stud mm	Artikelnummer Numéro d'article Part-No.	øD mm	øD1 mm	B mm	L mm	N mm	M mm	øD4 mm	A mm	S mm	Werkzeuge Outils Toolings
150	300 MCM	M8	3469a	8.4	16.5	31	58.5	14	14	21	28.5	4.2	3982cn
	300 MCM	M10	3470a	10.5	16.5	31	58.5	14	14	21	28.5	4.4	
	300 MCM	M12	3471a	13.2	16.5	31	58.5	14	14	21	28.5	4.4	
	300 MCM	M14	3472a	15	16.5	31	59.5	15	16	21	28.5	4.4	
	300 MCM	M16	3473a	17	16.5	31	62.5	16	17	21	28.5	4.4	
	300 MCM	M20	3474a	21	16.5	36	66.5	21	21	21	28.5	3.5	
185	350 MCM	M10	3480a	10.5	19	35	68.5	16	18	24	31.5	5	
	350 MCM	M12	3481a	13.2	19	35	68.5	16	18	24	31.5	4.7	
	350 MCM	M14	3482a	15	19	35	68.5	18	23	24	31.5	6.4	
	350 MCM	M16	3483a	17	19	35	68.5	16	17	24	31.5	5.1	
	350 MCM	M20	3484a	21	19	37	72.5	17	24	24	31.5	6.4	
240	400 MCM	M12	3486a	13.2	21	39	74.5	16	18	26	36.5	5	
	400 MCM	M14	3487a	15	21	39	74.5	16	18	26	36.5	4.7	
	400 MCM	M16	3488a	17	21	39	78.5	21	21	26	36.5	5	
	400 MCM	M20	3489a	21	21	39	78.5	21	22	26	36.5	4.7	
300	500 MCM	M12	34891a	13.2	23.5	44	83.5	24	24	29.5	45	6	
	500 MCM	M14	34892a	15	23.5	43	87	24	24	29.5	44	7	
	500 MCM	M16	34893a	17	23.5	44	87.5	17	20	29.5	45	7	
	500 MCM	M20	34894a	21	23.5	43	87	24	24	29.5	44	7	
400	600 MCM	M12	34896a	13.2	27	49	90	24	24	34	48	7.1	
	600 MCM	M14	34897a	15	27	49	90	24	25	34	48	7.1	
	600 MCM	M16	34898a	17	27	49	90	24	25	34	48	7.1	
	600 MCM	M20	34899a	21	27	49	90	24	25	34	48	7.1	



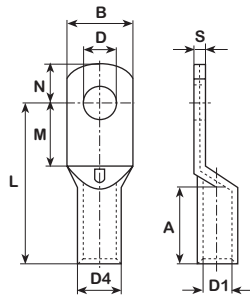
Werkstoff:
E-CU sn = Elektrolytkupfer verzinkt

Matériau:
E-CU sn = cuivre électrolytique étamé

Material:
E-CU sn = tin-plated electrolytic copper

mm ²	AWG	für Bolzen pour borne for stud mm	Artikelnummer Numéro d'article Part-No.	øD mm	øD1 mm	B mm	L mm	N mm	M mm	H mm	øD4 mm	A mm	S mm	Werkzeuge Outils Toolings
6	10	M6	3410w	6.4	3.6	10.5	10	6	7	13	5.5	9	1	3980n, 3982e, 3984f
10	8	M4	3414w	4.3	4.6	10	8	4.5	4.5	14.5	7	10.5	2	3980p, 3981an, 3982cn, 3982e
	8	M5	3415w	5.3	4.6	10.5	9	6	6.5	14.5	7	10.5	2	
	8	M6	3416w	6.4	4.6	11	10	6.5	7	14.5	7	10.5	1.5	
	8	M8	3417w	8.4	4.6	15	11	8	9	14.5	7	10.5	1.5	
	8	M10	3418w	10.5	4.6	18	14	10.5	11	14.5	7	10.5	1	
	8	M12	3419w	13.2	4.6	19	17.5	12.5	14	14	7	10.5	1	
16	6	M5	3420w	5.3	5.8	12	10	6	6.5	16.5	8	12	2	3980p, 3981an, 3982cn, 3982e
	6	M6	3421w	6.4	5.8	12	11	6.5	7.5	17	8	12	2	
	6	M8	3422w	8.4	5.8	15	13	8.5	9	17	8	12	1.5	
	6	M10	3423w	10.5	5.8	18	15	10.5	15.5	17.5	8	12	1.5	
	6	M12	3424w	13.2	5.8	20	12.5	12.5	15	16	8	12	1	
25	4	M5	3425w	5.3	7	14	12	6	8	18	9.5	14	2	3980p, 3981an, 3982cn, 3982e, 3982g
	4	M6	3426w	6.4	7	14.5	12.5	6	8.5	18.5	9.5	13	2	
	4	M8	3427w	8.4	7	15.5	14	8	10.5	18.5	9.5	14	2	
	4	M10	3428w	10.5	7	18	16.5	10	13	17.5	9.5	14	1.5	
	4	M12	3429w	13.2	7	21	20.5	12.5	16	17.5	9.5	13	1.5	
35	2	M6	3431w	6.4	8.9	17	13.5	6	8	22	12	16.5	2.5	3981an, 3982cn, 3982e, 3982g
	2	M8	3432w	8.4	8.9	17	14	8	9	22	12	16.5	2.5	
	2	M10	3433w	10.5	8.9	19	16.5	10	11	22	12	14	2.5	
	2	M12	3434w	13.2	8.9	21	19.5	12	14	22	12	14	2	
	2	M16	3441w	17	10	26	25.5	16.5	18	27	13	19	2	
50	1/0	M8	3437w	8.4	10	19	15	8	9.5	26	13	19.5	3	3981an, 3982cn, 3982e, 3982g
	1/0	M10	3438w	10.5	10	20	17	10	11.5	26.5	13	19.5	3	
	1/0	M12	3439w	13.2	10	21.5	20.5	12.5	14.5	27	13	19.5	2.5	
	1/0	M16	3441w	17	10	26	25.5	16.5	18	27	13	19	2	
	2/0	M8	3445w	8.4	11.3	21	17	8	9.5	30	15	22.5	3	
70	2/0	M10	3446w	10.5	11.3	21	20	10	13	30	15	22.5	3	3981an, 3982cn, 3982g
	2/0	M12	3447w	13.2	11.3	22.5	21.5	12.5	15	30	15	22.5	3	
	2/0	M16	3447w	17	11.3	27.5	26.5	16.5	19.5	35	18	24	3.5	
95	3/0	M8	3457w	8.4	13.5	25.5	19	8.5	10.5	35.5	18	24	3.5	3981an, 3982cn, 3982g
	3/0	M10	3458w	10.5	13.5	25.5	23.5	10.5	12.5	35.5	18	24.5	3.5	
	3/0	M12	3459w	13.2	13.5	25.5	23.5	11	15	35.5	18	24.5	3.5	
	3/0	M14	3460w	15	13.5	25.5	25.5	15	18	34.5	18	25	3.5	
	3/0	M16	3461w	17	13.5	27	26.5	16.5	19.5	35	18	24	3.5	
120	250 MCM	M8	3463w	8.4	15.2	28.5	20	8.5	11	37	20	25	4	3981an, 3982cn, 3982g
	250 MCM	M10	3464w	10.5	15.2	28.5	21.5	10.5	12.5	37	20	25	4	
	250 MCM	M12	3465w	13.2	15.2	29	24.5	12.5	15	37	20	25	4	
	250 MCM	M14	3466w	15	15.2	29	26.5	14.5	17.5	37	20	25	4	
	250 MCM	M16	3467w	17	15.2	29	28	16.5	20	37.5	20	25.5	4	
	250 MCM	M20	3468w	21	15.2	30.5	33.5	20.5	23.5	37.5	20	25	4	

mm ²	AWG	für Bolzen pour borne for stud mm	Artikelnummer Numéro d'article Part-No.	øD mm	øD1 mm	B mm	L mm	N mm	M mm	H mm	øD4 mm	A mm	S mm	Werkzeuge Outils Toolings
150	300 MCM	M10	3470w	10.5	16.7	31.5	25	11.5	15	45	21.5	28	4.5	3982cn
	300 MCM	M12	3471w	13.2	16.7	31.5	28	14	19	44.5	21.5	28	4.5	
	300 MCM	M14	3472w	15	16.7	31.5	30.5	16.5	20	44.5	21.5	27	4.5	
	300 MCM	M16	3473w	17	16.7	31.5	31	17.5	20.5	45	21.5	27	4.5	
185	350 MCM	M10	3480w	10.5	19.2	35.5	25.5	11.5	13.5	52	24.5	30	5	
	350 MCM	M12	3481w	13.2	19.2	35.5	28.5	14	17.5	52.5	24.5	30	5	
	350 MCM	M14	3482w	15	19.2	35.5	30.5	16.5	19.5	52	24.5	30	5	
	350 MCM	M16	3483w	17	19.2	35.5	32	17.5	21.5	51.5	24.5	29.5	5	
240	400 MCM	M20	3484w	21	19.2	35.5	36.5	20	25.5	50	24.5	30	5	
	400 MCM	M12	3486w	12.5	21.2	39.5	30	13.5	19.5	57	27.5	32	6	
	400 MCM	M14	3487w	15	21.2	39.5	32.5	16.5	18.5	58.5	27.5	32	6	
	400 MCM	M16	3488w	17	21.2	39.5	33	17.5	21.5	58	27.5	35	6	
300	400 MCM	M20	3489w	21	21.2	39.5	37.5	20	22.5	58.5	27.5	32	6	
	500 MCM	M12	34891w	13.2	23.7	44	36	14.5	23.5	63.5	31	41	7	
	500 MCM	M16	34893w	17	23.7	44	38	19	25.5	64	31	42.5	7	
	500 MCM	M20	34894w	21	23.7	44	40	23.5	27.5	64	31	42.5	7	



flach englaschig

Werkstoff:
E-CU sn = Elektrolytkupfer verzinkt

plate serré

Matière:
E-CU sn = cuivre électrolytique étamé

tight plate

Material:
E-CU sn = tin-plated electrolytic copper

mm ²	AWG	für Bolzen pour borne for stud mm	Artikelnummer Numéro d'article Part-No.	øD mm	øD1 mm	B mm	L mm	N mm	M mm	øD4 mm	A mm	S mm	Werkzeuge Outils Toolings
10	8	M5	3415s	5.3	4.6	9	20	6	6.5	7	10	2.5	3980p, 3981an, 3982cn, 3982e
16	6	M5	3420s	5.3	5.8	9	23	6	6.5	8	12	2.5	
25	4	M5	3425s	5.3	7	9	25.5	6	6.5	9.5	15	2.5	
35	2	M6	3431s	6.4	8.9	11.5	29.5	7	8	12	16	3.5	3981an, 3982cn, 3982e, 3982g
50	1/0	M6	3436s	6.4	10	11.5	33.5	7	8	13.5	19	4.5	
	1/0	M8	3437s	8.4	10	16.5	34.5	8	9	13.5	17	3	
70	2/0	M6	3444s	6.4	11.3	12.5	37	7	8	15	20	5	3981an, 3982cn, 3982g
	2/0	M8	3445s	8.3	11.3	16.5	39	8	9	15	20	3.5	
95	3/0	M8	3457s	8.4	13.5	15.5	44.5	8	9	18	24	5.5	
120	250 MCM	M8	3463s	8.4	15.2	19	51	9	14	20	26	5.5	3982cn, 3982g
	250 MCM	M10	3464s	10.5	15.2	19	51	9	14	20	26	5.5	
150	300 MCM	M8	3469s	8.4	16.7	19	61	9	18	21.5	28	6	3982cn
	300 MCM	M10	3470s	10.5	16.7	19	61	9	18	21.5	28	6	
185	350 MCM	M10	3480s	10.5	19.2	24.5	68	9	18	24.5	30	6.5	
240	400 MCM	M10	3485s	10.5	21.2	31	71	9	13	24.5	35	7	
	400 MCM	M12	3486s	13.2	21.2	31	74	12	16	27.5	35	7	
	400 MCM	M16	3488s	17	21.2	31	77	17	19	27.5	35	7	
300	500 MCM	M12	34891s	13.2	23.7	31	83	12	16	31	43	7.5	