

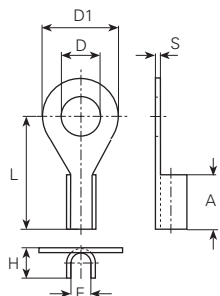
# Lötkabelschuhe offen

## Cosses de câble à souder, ouvertes

### Soldering terminals, open

Werkstoff/Matière/Material  
.6 = Messing/laiton/brass

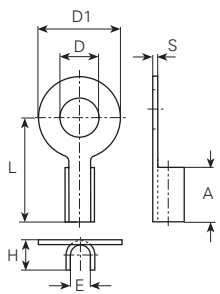
■ = Oberflächen/Surface/Surface-plating  
Seite/page/page 5.011



mm <sup>2</sup>	AWG	für Bolzen pour borne for stud mm	øD mm	E mm	øD1 mm	L mm	A mm	H mm	S mm	Artikelnummer Numéro d'article Part-No.
<b>0.5-1</b>	22-18	M3	3.2	1.4	6	10	3.5	2.6	0.5	<b>3218a.6</b> ■
<b>1.5</b>	16	M3	4	1.8	7	11.5	7	4.6	0.8	<b>3219a.6</b> ■
	16	M4	4.3	1.8	8	13	5	3.1	0.5	<b>3228a.6</b> ■
<b>4</b>	12	M3.5	3.7	2.8	8.5	12.8	4.5	4.3	0.5	<b>3223a.6</b> ■

Werkstoff/Matière/Material  
.6 = Messing/laiton/brass

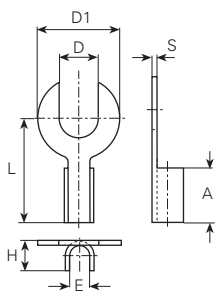
■ = Oberflächen/Surface/Surface-plating  
Seite/page/page 5.011



mm <sup>2</sup>	AWG	für Bolzen pour borne for stud mm	øD mm	E mm	øD1 mm	L mm	A mm	H mm	S mm	Artikelnummer Numéro d'article Part-No.
<b>0.14-0.34</b>	26-24	M2	2.3	0.9	8	11	4	1.5	0.25	<b>3215b.6</b> ■
	26-24	M2	2.3	0.9	8	14	4	1.5	0.25	<b>3215a.6</b> ■
	26-24	M4	4.3	0.9	8	14	4	1.5	0.25	<b>3213a.6</b> ■
<b>1</b>	18	M3	3.2	1.3	5	5.5	3	2.2	0.3	<b>3216a.6</b> ■
<b>1.5</b>	16	M2	2.5	1.8	4.5	7.5	4.5	3.2	0.3	<b>3212a.6</b> ■
	16	M4	4.3	1.8	7	11.5	6.5	3	0.5	<b>3226a.6</b> ■
<b>2.5</b>	14	M5	5.3	2.3	9	11.5	6	3.5	0.5	<b>3236a.6</b> ■
	14	M6	6.4	2.3	9	11.5	6	3.5	0.5	<b>3238a.6</b> ■
<b>4</b>	12	M6	6.4	2.8	12	14	6	4.2	0.5	<b>3240a.6</b> ■

Werkstoff/Matière/Material  
.6 = Messing/laiton/brass

■ = Oberflächen/Surface/Surface-plating  
Seite/page/page 5.011



mm <sup>2</sup>	AWG	für Bolzen pour borne for stud mm	øD mm	E mm	øD1 mm	L mm	A mm	H mm	S mm	Artikelnummer Numéro d'article Part-No.
<b>2.5</b>	14	M5	5.3	2.3	9	11.5	6	3.5	0.5	<b>3236c.6</b> ■