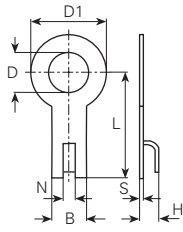


Werkstoff/Matière/Material  
 .6 = Messing/laiton/brass

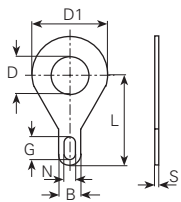
■ = Oberflächen/Surface/Surface-plating  
 Seite/page/page 5.011



øD mm	L mm	øD1 mm	B mm	N mm	H mm	S mm	Artikelnummer Numéro d'article Part-No.
<b>3.2</b>	10	6	4.5	1.5	2.5	0.5	<b>2100.6</b> ■
<b>4.3</b>	12	8	4.5	1.3	2.5	0.5	<b>2101.6</b> ■
<b>5.3</b>	14	10	4.5	1.4	2.75	0.5	<b>2102.6</b> ■
<b>6.4</b>	14	10	4.8	1.5	2	0.3	<b>2103.6</b> ■
<b>8.5</b>	16	15	5	1.5	2.5	0.5	<b>2103a.6</b> ■
<b>10.5</b>	16	15.2	5	1.5	2.5	0.5	<b>2104.6</b> ■

Werkstoff/Matière/Material  
 .6 = Messing/laiton/brass

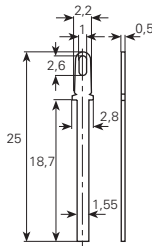
■ = Oberflächen/Surface/Surface-plating  
 Seite/page/page 5.011



øD mm	L mm	øD1 mm	B mm	N mm	G mm	S mm	DIN	Artikelnummer Numéro d'article Part-No.
<b>2.2</b>	6.5	4.5	2	ø 1	ø 1	0.4	2 DIN-46215	<b>2120.6</b> ■
<b>4.3</b>	12	10	3	1.5	3	0.5	4 DIN-46215	<b>2128.6</b> ■

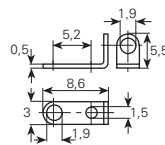
Werkstoff/Matière/Material  
 .6 = Messing/laiton/brass

■ = Oberflächen/Surface/Surface-plating  
 Seite/page/page 5.011

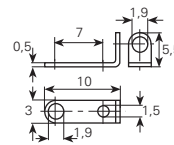


Artikelnummer  
Numéro d'article  
Part-No.

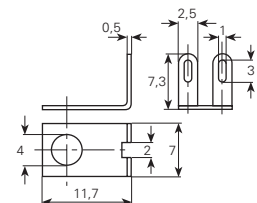
**1100.6**■



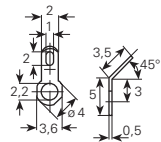
**1136a.6**■



**1136c.6**■

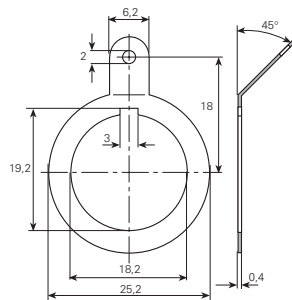


**1139m.6**■

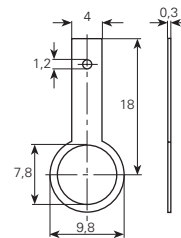


Artikelnummer  
Numéro d'article  
Part-No.

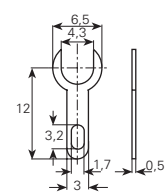
**201745.6**■



**2080.6**■



**2084.6**■



**2127.6**■