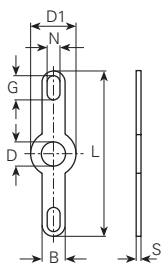


Werkstoff/Matière/Material
.6 = Messing/laiton/brass

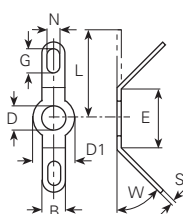
■ = Oberflächen/Surface/Surface-plating
Seite/page/page 5.011



øD mm	L mm	øD1 mm	B mm	N mm	G mm	S mm	DIN	Artikelnummer Numéro d'article Part-No.
2.2	18	4.5	3	1.7	3.2	0.4	41496-A2-2	2500.6■
2.6	18.5	5.5	3	1.4	2.5	0.3		2501.6■
3.1	18.5	6	3	1.5	3	0.4		2521.6■
3.2	24	5.5	3	1.7	3.2	0.5	41496-A2-3	2504.6■
4.3	24	6.5	3	1.7	3.2	0.5	41496-A2-4	2505.6■
6.4	30	10	3	1.7	3.2	0.5		2519.6■

Werkstoff/Matière/Material
.6 = Messing/laiton/brass

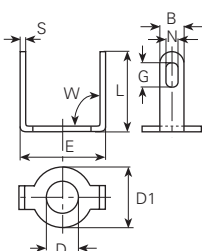
■ = Oberflächen/Surface/Surface-plating
Seite/page/page 5.011



45°									
øD mm	W mm	L mm	E mm	øD1 mm	B mm	N mm	G mm	S mm	Artikelnummer Numéro d'article Part-No.
3.1	45°	9.2	5.7	6	3	1.5	3	0.4	252145.6■
3.2	45°	12	7.5	5.5	3	1.7	3.2	0.5	250445.6■

Werkstoff/Matière/Material
.6 = Messing/laiton/brass

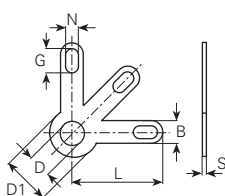
■ = Oberflächen/Surface/Surface-plating
Seite/page/page 5.011



90°									
øD mm	W mm	L mm	E mm	øD1 mm	B mm	N mm	G mm	S mm	Artikelnummer Numéro d'article Part-No.
3.1	90°	6.8	6.5	6	3	1.5	3	0.4	252190.6■

Werkstoff/Matière/Material
.6 = Messing/laiton/brass

■ = Oberflächen/Surface/Surface-plating
Seite/page/page 5.011



øD mm	L mm	øD1 mm	B mm	N mm	G mm	S mm	DIN	Artikelnummer Numéro d'article Part-No.
3.2	12	6.5	3	1.7	3.2	0.3		2560.6■
4.3	12	6.5	3	1.7	3.2	0.3		2572.6■
	12	6.5	3	1.7	3.2	0.5	41496-A3-4x12	2574.6■