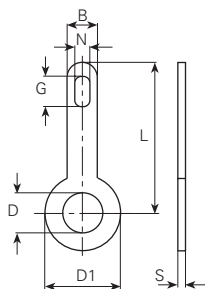


Werkstoff/Matière/Material
.6 = Messing/laiton/brass
.9 = Stahl/acier/steel

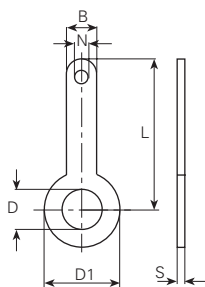
■ = Oberflächen/Surface/Surface-plating
Seite/page/page 5.011



øD mm	L mm	øD1 mm	B mm	N mm	G mm	S mm	DIN	Artikelnummer Numéro d'article Part-No.
1.6	5	3	2	0.7	1.3	0.3		2021.6■
	8	3	2	0.7	1.3	0.3		2022.6■
2.2	6	5.5	3	1	1.8	0.3		2025.6■
	9	4.5	3	1.7	3.2	0.4	41496-A1-2x9	2002.6■
	9	4.5	3	1.7	3.2	0.5		200205.9■
	9	5.5	3	1.7	3.2	0.3		2027.6■
	4.5	12	3	1.7	3.2	0.4	41496-A1-2x12	2005.6■
2.6	9	4.5	3	1.7	3.2	0.3		2035.6■
	12	4.5	3	1.7	3.2	0.4		2036.6■
2.8	9	5.5	3	1.7	3.2	0.3		2038.6■
3.2	9	5.5	3	1.7	3.2	0.3		2003.6■
	12	5.5	3	1.7	3.2	0.3		200603.6■
	12	5.5	3	1.7	3.2	0.5	41496-A1-3x12	2006.6■
	12	6.5	3	1.7	3.2	0.3		2055.6■
	18	5.5	3	1.7	3.2	0.5	41496-A1-3x18	2008.6■
	18	6.5	3	1.7	3.2	0.5		2013.6■
	24	7	3	1.7	3.2	0.5		2058.6■
3.7	9	6	3	1.7	3.2	0.3		2060.6■
	12	6.5	3	1.7	3.2	0.3		2061.6■
	18	6.5	3	1.7	3.2	0.3		2062.6■
4.2	21	6.3	3	1.5	2.7	0.3		2077.9■
4.3	9	6	3	1.7	3.2	0.3		2004.6■
	12	6.5	3	1.7	3.2	0.5	41496-A1-4x12	2007.6■
	18	6.5	3	1.7	3.2	0.5	41496-A1-4x18	2009.6■
	24	7	3	1.7	3.2	0.3		201503.6■
	24	7	3	1.7	3.2	0.5		2015.6■
4.7	9.4	7.5	3	1.3	2.2	0.3		2047.6■
5.3	12	10	4	1.7	3.2	0.3		2064.6■
	20	10	4	2	4.2	0.5		2065.6■
6.4	12	10	4	1.7	3.2	0.3		2067.6■
	20	10	4	2	4.2	0.5		2068.6■
7.3	12	10	4	1.7	3.2	0.3		2069.6■
8	12	10	4	1.7	3.2	0.3		2088.6■
11.2	16	15	4	1.5	4	0.5		2054.6■

Werkstoff/Matière/Material
.2 = Bronze/bronze
.6 = Messing/laiton/brass

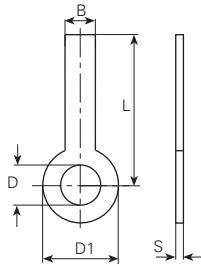
■ = Oberflächen/Surface/Surface-plating
Seite/page/page 5.011



øD mm	L mm	øD1 mm	B mm	N mm	S mm	Artikelnummer Numéro d'article Part-No.
2.7	6.5	5	3	1.6	0.4	2000.6■
3.2	6.5	5	3.2	1.6	0.3	2001.6■
	6.5	5	3	1.8	0.3	2014.6■
4.15	10.7	5.5	3	1.15	0.2	2018.2■
5.5	18	9	4	1	0.4	2010.6■
8.2	14	12	4	1.7	0.3	2053.6■
9.6	14	12	4	1.7	0.5	2051.6■
18	27.5	25	2.8	1	0.5	2083.6■
18.5	36	28	6	2	0.3	2075.6■
19	36	36	5	2.5	0.5	2032.6■

Werkstoff/Matière/Material
 .6 = Messing/laiton/brass

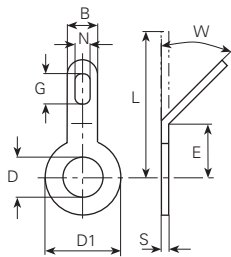
■ = Oberflächen/Surface/Surface-plating
 Seite/page/page 5.011



øD mm	L mm	øD1 mm	B mm	S mm	Artikelnummer Numéro d'article Part-No.
3.2	21	5.5	1.5	0.5	2048.6■
	29	5.5	1.5	0.5	2056.6■
	36	5.5	1.5	0.5	2057.6■

Werkstoff/Matière/Material
 .6 = Messing/laiton/brass

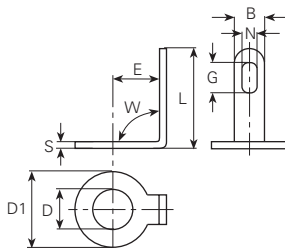
■ = Oberflächen/Surface/Surface-plating
 Seite/page/page 5.011



45°										
øD mm	W mm	L mm	E mm	øD1 mm	B mm	N mm	G mm	S mm	DIN	Artikelnummer Numéro d'article Part-No.
3.2	45°	9	3.2	5.5	3	1.7	3.2	0.3	41496-B1-3x12	20345.6■
	45°	12	4.3	5.5	3	1.7	3.2	0.5		20645.6■
	45°	12	4.2	5.5	3	1.7	3.2	0.8		2060845.6■
4.3	45°	12	5.5	6.5	3	1.7	3.2	0.5	41496-B1-4x12	200745.6■

Werkstoff/Matière/Material
 .2 = Bronze/bronze
 .6 = Messing/laiton/brass

■ = Oberflächen/Surface/Surface-plating
 Seite/page/page 5.011



90°										
øD mm	W mm	L mm	E mm	øD1 mm	B mm	N mm	G mm	S mm	DIN	Artikelnummer Numéro d'article Part-No.
3.2	90°	6	3.2	5.5	3	1.7	3.2	0.3	41496-B1-3x12	200390.6■
	90°	8	4.3	5.5	3	1.7	3.2	0.5		200690.6■
	90°	8	2.5	5.5	3	1.7	3.2	0.5		201990.2■
4.3	90°	7	5.5	6.5	3	1.7	3.2	0.5	41496-B1-4x12	200790.6■