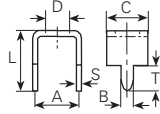


Werkstoff/Matière/Material
 .2 = Bronze/bronze
 .4 = Kupfer/cuivre/copper
 .6 = Messing/laiton/brass
 .9 = Stahl/acier/steel

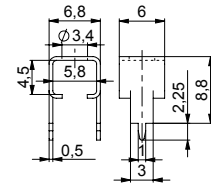
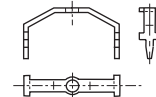
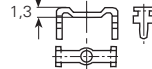
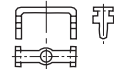
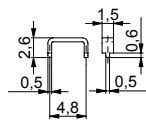
■ = Oberflächen/Surface/Surface-plating
 Seite/page/page 5.011



Lötbrücken

contacts shuntés

bridge connectors



Artikelnummer
 Numéro d'article
 Part-No.

Bohrung/Trou/Hole

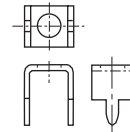
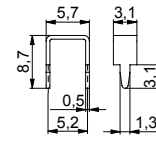
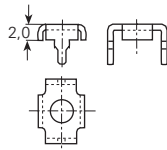
1098x.4
∅ 0.6
T
L
C
A
∅D
B
S

1098b.6
∅ 0.8
T 2.5
L 4.3
C 2.7
A 8
∅D 1.4
B 0.8
S 0.3

1098c.6
∅ 0.8
T 2.5
L 4.3
C 2.7
A 8
∅D 1.4
B 0.8
S 0.3

1098h.6
∅ 0.8
T 2.5
L 6.7
C 2.7
A 12.7
∅D 1.5
B 0.8
S 0.3

1098g.6
∅ 0.9
T
L
C
A
∅D 3.4
B
S



Artikelnummer
 Numéro d'article
 Part-No.

Bohrung/Trou/Hole

1098l.6
∅ 1.0/1.5
T 2.0/3.0
L 5
C 6
A 7.5
∅D 3.5
B 0.9/1.5
S 0.5

1099s.2
∅ 1
T 5.4
L 7.4
C 5
A 4.2
∅D
B 0.8
S 0.73

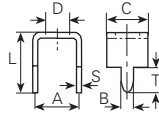
1098m.6
∅ 1.3
T 3.1
L 8.2
C 3.1
A 5.2
∅D -
B 1.3
S 0.5

1098w.6
∅ 1.3
T
L
C
A
∅D
B
S

1098a.6
∅ 1.4
T 3.5
L 8
C 5.5
A 6.3
∅D 3.2
B 1.4
S 0.5

Werkstoff/Matière/Material
 .2 = Bronze/bronze
 .4 = Kupfer/cuivre/copper
 .6 = Messing/laiton/brass
 .9 = Stahl/acier/steel

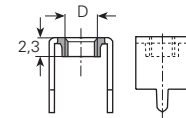
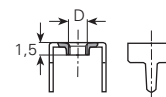
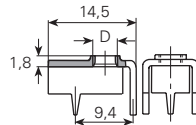
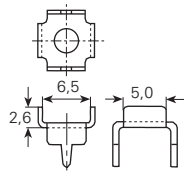
■ = Oberflächen/Surface/Surface-plating
 Seite/page/page 5.011



Lötbrücken

contacts shuntés

bridge connectors



Artikelnummer
 Numéro d'article
 Part-No.
 Bohrung/Trou/Hole

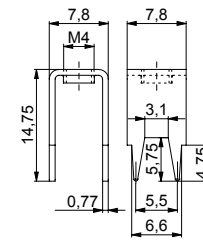
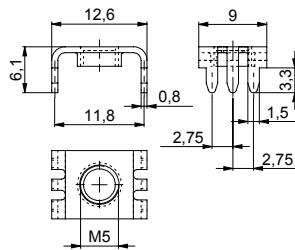
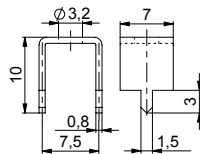
1098f.6
∅ 1.5
T 3
L 8
C 7.5
A 7.5
∅D 3.2
B 1.5
S 0.5

1098p.9
∅ 1.5
T 3.5
L 9.8
C 9.2
A 8.2
∅D M3.5
B 1.2
S 1

1098s.4
∅ 1.5
T 4.8
L 5.4
C 1.5
A 5
∅D
B 1.5
S 0.6

1098t.6
∅ 1.5
T 3.5
L 6.5
C 6.2
A 7.5
∅D M3
B 1.5
S 0.5

1098u.6
∅ 1.6
T 3
L 10
C 7
A 7.5
∅D M4
B 1.5
S 0.8



Artikelnummer
 Numéro d'article
 Part-No.
 Bohrung/Trou/Hole

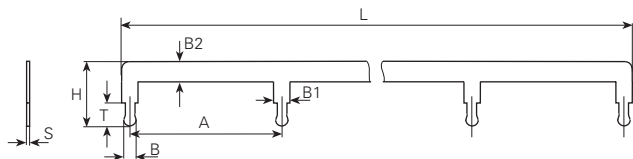
1098e.6
∅ 1.6
T
L
C
A
∅D 3.2
B
S

1098d.6
∅ 1.6
T
L
C
A
∅D M5
B
S

1099y.6
∅ 1.6
T
L
C
A
∅D M4
B
S

Werkstoff/Matière/Material
 .4 = Kupfer/cuivre/copper
 .6 = Messing/laiton/brass
 .7 = Neusilber/mailechort/german silver

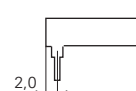
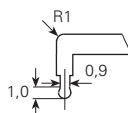
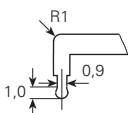
■ = Oberflächen/Surface/Surface-plating
 Seite/page/page 5.011



Sammelschienen

plots à souder

tag blocks



Artikelnummer
 Numéro d'article
 Part-No.

Bohrung/Trou/Hole

1059.6■

∅ 1.1
 T 3
 A 20
 L 81.8
 H 8.5
 B1 1.8
 B2 2.5
 B 1.1
 S 0.4

1059.7■

∅ 1.1
 T 3
 A 20
 L 81.8
 H 8.5
 B1 1.8
 B2 2.5
 B 1.1
 S 0.4

1059d.6■

∅ 1
 T 3
 A 20
 L 81.8
 H 8.5
 B1 1.8
 B2 2.5
 B 0.9
 S 0.4

1059g.4■

∅ 0.8
 T 3
 A 25.4
 L 131
 H 8.5
 B1 1.5
 B2 4
 B 0.65
 S 0.4

Anzahl Kontakte
 Quantité contacts
 Quantity Contacts

5

5

5

6

Artikelnummer
 Numéro d'article
 Part-No.

Bohrung/Trou/Hole

1059i08.4■

∅ 0.8
 T 3
 A 25.4
 L 181.8
 H 7
 B1 1.2
 B2 3
 B 0.6
 S 0.4

1059i10.4■

∅ 0.8
 T 3
 A 25.4
 L 232.6
 H 7
 B1 1.2
 B2 3
 B 0.6
 S 0.4

1059i12.4■

∅ 0.8
 T 3
 A 25.4
 L 283.4
 H 7
 B1 1.2
 B2 3
 B 0.6
 S 0.4

1059i14.4■

∅ 0.8
 T 3
 A 25.4
 L 334.2
 H 7
 B1 1.2
 B2 3
 B 0.6
 S 0.4

1059i16.4■

∅ 0.8
 T 3
 A 25.4
 L 385
 H 7
 B1 1.2
 B2 3
 B 0.6
 S 0.4

Anzahl Kontakte
 Quantité contacts
 Quantity Contacts

8

10

12

14

16