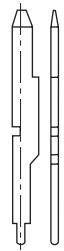
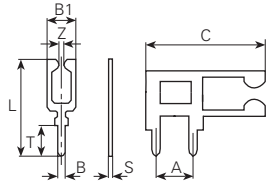


Steckkontakte Pièces de raccord enfichables Contacts to push-on

Werkstoff/Matière/ Material
 .2 = Bronze/bronze
 .6 = Messing/laiton/brass
 .7 = Neusilber/mailechort/german silver

■ = Oberflächen/Surface/Surface-plating
 Seite/page/page 5.011



Artikelnummer Numéro d'article Part-No.	1026b.6
Bohrung/Trou/Hole	∅ 1.25
T	3
L	31
B1	2.5
Z	
A	
C	3.5
B	1
S	1

Werkzeuge
Outils
Toolings

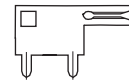


Artikelnummer Numéro d'article Part-No.	1003g.2
Bohrung/Trou/Hole	∅ 1.3
T	3.1
L	11.5
B1	2.9
Z	0.3
A	
C	
B	1.2
S	0.7

13

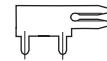


Artikelnummer Numéro d'article Part-No.	1006g.2
Bohrung/Trou/Hole	∅ 1.2
T	3
L	6.5
B1	2.6
Z	0.4
A	5
C	18.7
B	1.1
S	0.6



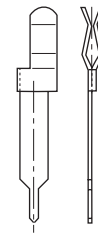
Artikelnummer Numéro d'article Part-No.	1005g.2
Bohrung/Trou/Hole	∅ 1.2
T	3
L	9.5
B1	2.6
Z	0.4
A	5
C	15.8
B	1.1
S	0.6

26

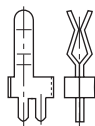


Artikelnummer Numéro d'article Part-No.	1004g.2
Bohrung/Trou/Hole	∅ 1.3
T	3
L	6.5
B1	2.6
Z	0.5
A	5
C	12.8
B	1.1
S	0.6

24

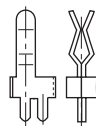


Artikelnummer Numéro d'article Part-No.	1341p.7
Bohrung/Trou/Hole	∅ 1.2
T	4.5
L	28.5
B1	3
Z	0.1
A	
C	4.8
B	1.2
S	0.3

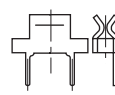


Artikelnummer Numéro d'article Part-No.	1341k.2
Bohrung/Trou/Hole	∅ 1.3
T	3
L	14.7
B1	2.5
Z	0.1
A	2.5
C	6
B	1.3
S	0.3

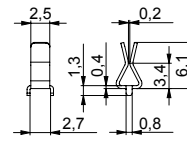
Werkzeuge
Outils
Toolings



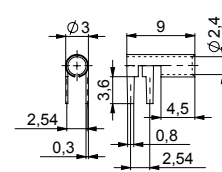
Artikelnummer Numéro d'article Part-No.	1341k.7
Bohrung/Trou/Hole	∅ 1.3
T	3
L	14.7
B1	2.5
Z	0.1
A	2.5
C	6
B	1.3
S	0.3



Artikelnummer Numéro d'article Part-No.	1342b.2
Bohrung/Trou/Hole	∅ 0.6
T	2.9
L	6.9
B1	4.1
Z	6.2
A	4.5
C	7.6
B	0.4
S	0.4



Artikelnummer Numéro d'article Part-No.	1341w.6
Bohrung/Trou/Hole	∅ 0.8
T	0.9
L	7
B1	
Z	
A	
C	
B	
S	0.4



Artikelnummer Numéro d'article Part-No.	1343.7
Bohrung/Trou/Hole	∅ 0.7
T	
L	
B1	
Z	
A	
C	
B	
S	