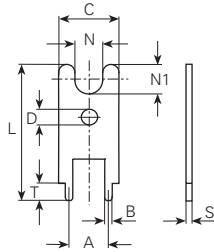
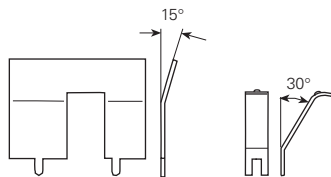


Werkstoff/Matière/Material
 .2 = Bronze/bronze
 .6 = Messing/laiton/brass
 .9 = Stahl/acier/steel

■ = Oberflächen/Surface/Surface-plating
 Seite/page/page 5.011

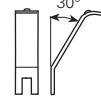


Kontaktteile / Pièces de contact / Contact parts

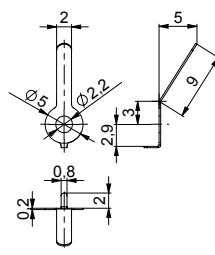


Artikelnummer
 Numéro d'article
 Part-No.
 Bohrung/Trou/Hole

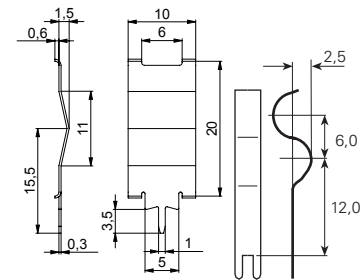
1099h.6
∅ 0.6
T 2.5
L 15.5
C 18
A 10.2
N 5
N1 8.5
B 0.5
S 0.5



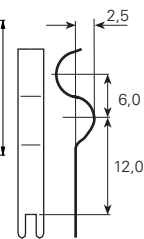
1334.2
∅ 0.8
T 2
L 11
C 3
A 2.2
N
N1
B 0.8
S 0.2



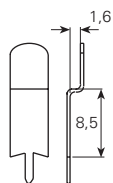
1096b.2
∅ 0.8
T 2
L 14.9
C 3.1
A
N
N1
B 0.8
S 0.2



1334h.2
∅ 0.9
T 3.5
L 25.5
C
A
N
N1
B
S 0.3

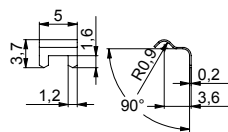


1334d.2
∅ 1
T 3
L 25
C 3.5
A 2.5
N
N1
B 1
S 0.3

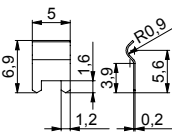


Artikelnummer
 Numéro d'article
 Part-No.
 Bohrung/Trou/Hole

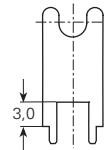
1530h.2
∅ 1
T 3.5
L 18.5
C 5
A
N
N1
B 1
S 0.3



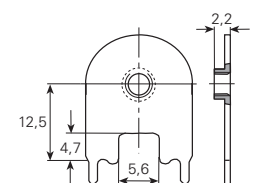
1530l.2
∅ 1.2
T 1.6
L 4.7
C
A
N
N1
B
S 0.2



1530k.2
∅ 1.2
T 1.6
L 6.9
C
A
N
N1
B
S 0.2



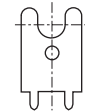
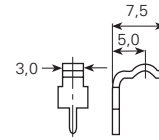
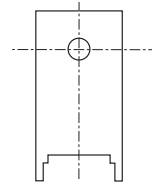
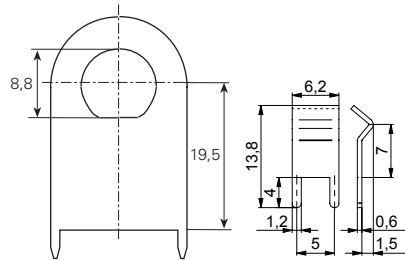
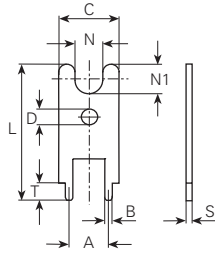
1099c.6
∅ 1.2
T 2.5
L 18
C 8
A 5
N 4
N1 4
B 1
S 0.8



1027k.6
∅ 1.2
T 3
L 23
C 15
A 12.7
N
N1
B 1.1
S 0.8

Werkstoff/Matière/Material
 .2 = Bronze/bronze
 .6 = Messing/laiton/brass
 .9 = Stahl/acier/steel

■ = Oberflächen/Surface/Surface-plating
 Seite/page/page 5.011



Artikelnummer
 Numéro d'article
 Part-No.
 Bohrung/Trou/Hole

1099g.6■

Ø	1.3
T	3.5
L	32
C	18
A	17
N	
N1	
B	1
S	1

1530.2■

Ø	1.3
T	4
L	13.8
C	6.2
A	5
N	
N1	
B	1.2
S	0.6

1027.9■

Ø	1.4
T	2.5
L	25
C	13.8
A	12.7
N	
N1	
B	1.1
S	1

3783c.6■

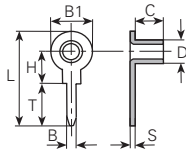
Ø	1.4
T	3.5
L	9.3
C	4
A	
N	
N1	
B	1.2
S	1

1099e.6■

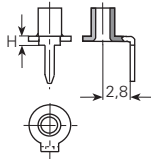
Ø	1.7
T	2
L	13.5
C	8
A	5
N	4
N1	4
B	1.5
S	1

Werkstoff/Matière/ Material
.6 = Messing/laiton/brass

■ = Oberflächen/Surface/Surface-plating
Seite/page/page 5.011



Nietlötösen / Cosses à river / Eyelet tags



Artikelnummer
Numéro d'article
Part-No.

Bohrung/Trou/Hole

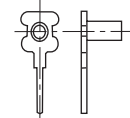
102990.6
∅ 1
T 6
L 11
B1 5.5
H 1
∅D 3
C 4
B 1
S 0.5



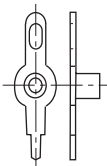
1029.6
∅ 1
T 6
L 12.7
B1 5.5
H 4
∅D 3
C 4
B 1
S 0.5



1032.6
∅ 1.1
T 3.5
L 8.5
B1 2
H 4
∅D 1.2
C 1.5
B 1.1
S 0.25



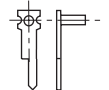
1031.6
∅ 1.1
T 6.5
L 13.5
B1 5
H 4.5
∅D 2
C 4.4
B 1.2
S 0.3



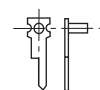
Artikelnummer
Numéro d'article
Part-No.

Bohrung/Trou/Hole

1039.6
∅ 1.2
T 4
L 19.5
B1 5.5/3.0
H 6.2
∅D 3
C 3.2
B 1.2
S 0.35



1036.6
∅ 1.2
T 4.5
L 10.5
B1 3
H 5
∅D 1.4
C 3.2
B 1.2
S 0.25



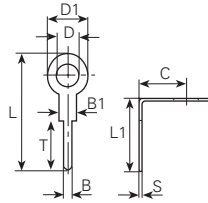
1034.6
∅ 1.2
T 5.4
L 9.5
B1 3
H 3
∅D 1.4
C 3.2
B 1.2
S 0.25




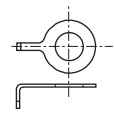
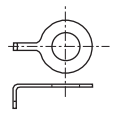

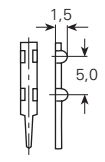
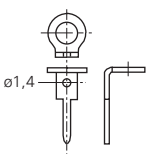
1038.6
∅ 1.8
T 6.5
L 9
B1 3
H 1.2
∅D 1.4
C 3.2
B 1.8
S 0.25

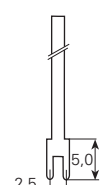
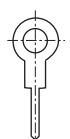
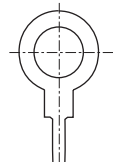

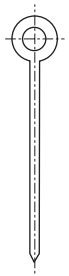
Werkstoff/Matière/Material
 .6 = Messing/laiton/brass
 .9 = Stahl/acier/steel

■ = Oberflächen/Surface/Surface-plating
 Seite/page/page 5.011



Kleinstanzteile / Petites pièces découpées / Small stamping parts

						
Artikelnummer Numéro d'article Part-No.	985.6 ■	1095g.6 ■	1095h.6 ■	1095d.6 ■	1030.6 ■	1096a.9 ■
Bohrung/Trou/Hole	∅ 0.7	∅ 0.9	∅ 0.9	∅ 1	∅ 1	∅ 1.1
T	6	3.2	3.2	2.5	4.5	6
L	6.5	L	L	L	L	L
∅D		∅D 4	∅D 4.5	∅D 1.9	∅D	∅D 2.6
∅D1		∅D1 7	∅D1 7	∅D1 3.2	∅D1	∅D1 5
B1	1.2	B1	B1	B1 1.5	B1 2.2	B1 3
C		C 7	C 7	C	C	C 2.8
B	0.6	B 0.8	B 0.8	B 0.8	B 1.1	B 1.1
S	0.6	S 0.5	S 0.5	S 0.8	S 0.3	S 0.5

					
Artikelnummer Numéro d'article Part-No.	1003y.6 ■	1095a.6 ■	1095b.6 ■	1095c.6 ■	1095e.6 ■
Bohrung/Trou/Hole	∅ 1.2	∅ 1.2	∅ 1.2	∅ 1.2	∅ 1.2
T	3	T 6.5	T 6.5	T 26	T 26.3
L	29	L 16.5	L 20.5	L	L 32.3
∅D		∅D 3.2	∅D 6.5	∅D 3	∅D 3
∅D1		∅D1 6	∅D1 10	∅D1 6	∅D1 6
B1	2	B1 3	B1 3	B1	B1
C		C	C	C 3.5	C
B	1	B 1.2	B 1.2	B 1.1	B 1.1
S	0.8	S 0.5	S 0.5	S 0.8	S 0.8