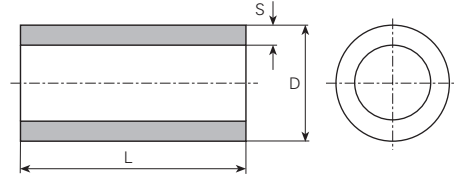


Werkstoff/Matière/Material
 .1 = Aluminium
 .4 = Kupfer/cuivre/copper
 .6 = Messing/laiton/brass
 .9 = Stahl/acier/steel

■ = Oberflächen/Surface/Surface-plating
 Seite/page/page 5.011



für Bolzen pour borne for stud mm	øD mm	S mm	L mm	Artikelnummer Numéro d'article Part-No.	für Bolzen pour borne for stud mm	øD mm	S mm	L mm	Artikelnummer Numéro d'article Part-No.	für Bolzen pour borne for stud mm	øD mm	S mm	L mm	Artikelnummer Numéro d'article Part-No.	
M2	2.8	0.2	4	x28040020.6■	4.5	4.5	0.9	2	x45020090.10	5	5	0.75	4.5	x50045075.6■	
	3	0.3	2	x30020030.10		4.5	0.9	2.5	x45025090.10		5	1	4.5	x50045100.9■	
	3	0.4	2.1	x30021040.6■		4.5	0.9	3	x45030090.10		5	0.75	5	x50050075.10	
	3	0.3	2.5	x30025030.6■		4.5	0.9	3.5	x45035090.10		5	0.75	5	x50050075.6■	
	3	0.3	3	x30030030.6■		4.5	0.9	4	x45040090.10		5	0.75	5	x50050075.9■	
	3	0.3	3	x30030030.9■		4.5	0.9	4.4	x45044090.10		5	1	5	x50050100.6■	
	3	0.5	3	x30030050.10		4.5	0.9	4.5	x45045090.10		5	0.75	5.5	x50055075.10	
	3	0.3	4	x30040030.10		4.5	0.9	5	x45050090.10		5	0.75	6	x50060075.10	
	3	0.3	5	x30050030.10		4.5	0.9	5	x45050090.9■		5	0.75	6	x50060075.9■	
	3	0.4	5	x30050040.6■		4.5	0.9	6	x45060090.10		5	0.75	6.4	x50064075.6■	
	3	0.5	5	x30050050.6■		4.5	0.9	7	x45070090.10		5	0.75	6.5	x50065075.10	
	3	0.3	6	x30060030.6■		4.5	0.9	7.3	x45073090.10		5	0.75	7	x50070075.10	
	3	0.3	7	x30070030.9■		4.5	0.9	8	x45080090.10		5	0.75	7	x50070075.6■	
	3	0.5	13	x30130050.6■		4.5	0.9	9	x45090090.10		5	0.75	7.2	x50072075.10	
	3	0.5	13	x30130050.9■		4.5	0.9	10	x45100090.10		5	0.75	8	x50080075.10	
	3	0.3	20	x30200030.9■		4.5	0.9	10.5	x45105090.10		5	0.75	8	x50080075.6■	
	3	0.5	20	x30200050.9■		4.5	0.9	11	x45110090.10		5	0.75	8	x50080075.9■	
	4	0.8	1	x40010080.10		4.5	0.9	12	x45120090.10		5	0.75	8.5	x50085075.6■	
	4	0.8	2	x40020080.10		4.5	0.9	13.5	x45135090.10		5	0.75	9	x50090075.10	
	4	0.75	2.5	x40025075.6■		4.5	0.9	14	x45140090.10		5	0.75	9	x50090075.9■	
	4	0.8	3	x40030080.10		4.5	0.9	15	x45150090.10		5	0.75	9.3	x50093075.6■	
	4	0.8	4	x40040080.10		4.5	0.9	16	x45160090.10		5	0.75	9.4	x50094075.6■	
	4	0.75	5	x40050075.6■		4.5	0.9	20	x45200090.10		5	0.75	9.5	x50095075.10	
	4	0.8	5	x40050080.10		M3	4	0.4	4		x40040040.10	5	0.75	9.6	x50096075.6■
	4	0.8	5.3	x40053080.10			5	0.75	10		x40080040.10	5	0.75	10	x50100075.10
	4	0.8	5.5	x40055080.10			5	0.75	10		x40120040.10	5	0.75	10	x50100075.6■
	4	0.8	6	x40060080.10			4	0.4	12		x40120040.6■	5	0.75	10	x50100075.9■
4	0.8	7	x40070080.10	4	0.4		28	x40280040.6■	5	0.75	11	x50110075.10			
4	0.8	8	x40080080.10	4.5	0.5		3	x45030050.6■	5	0.75	11	x50110075.6■			
4	0.8	9	x40090080.10	4.8	0.5		3	x48030050.6■	5	0.75	11	x50110075.9■			
4	0.8	10	x40100080.10	5	0.75		2	x50020075.10	5	0.75	11.5	x50115075.10			
4	0.8	12	x40120080.10	5	0.75		2	x50020075.6■	5	0.75	12	x50120075.10			
4	0.8	15	x40150080.10	5	0.75		2	x50020075.9■	5	0.75	12	x50120075.6■			
4	0.8	16	x40160080.10	5	0.75		2.2	x50022075.10	5	0.75	12	x50120075.9■			
4	0.8	20	x40200080.10	5	0.75		2.5	x50025075.10	5	0.75	13	x50130075.10			
4	0.8	30	x40300080.10	5	0.75		2.5	x50025075.9■	5	0.75	13	x50130075.9■			
4.5	0.9	2.2	x45022090.10	5	0.75		3	x50030075.10	5	0.75	14	x50140075.10			
4.5	0.9	6.5	x45065090.10	5	0.75		3	x50030075.6■	5	0.75	14	x50140075.9■			
M2.5	4	0.5	1.9	x40019050.6■	5		0.75	3	x50030075.9■	5	0.75	15	x50150075.10		
	4	0.5	3	x40030050.6■	5		0.75	3.5	x50035075.10	5	0.75	16	x50160075.10		
	4	0.5	4	x40040050.10	5		0.75	3.7	x50037075.10	5	0.75	16	x50160075.9■		
	4	0.5	4	x40040050.6■	5		0.75	4	x50040075.10	5	0.75	17	x50170075.10		
	4	0.5	9	x40090050.6■	5		0.75	4	x50040075.9■	5	0.75	17	x50170075.9■		
	4	0.5	12	x40120050.6■	5		0.9	4	x50040090.6■	5	0.75	18	x50180075.10		
	4	0.5	18.6	x40186050.6■	5		0.75	4.1	x50041075.6■	5	0.75	18	x50180075.9■		

Andere Abmessungen auf Anfrage

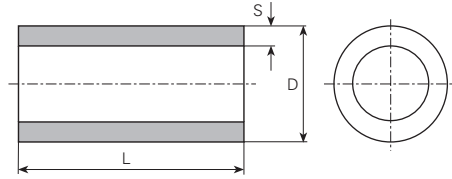
Autres dimensions sur demande

Further dimensions on request

für Bolzen pour borne for stud mm	øD mm	S mm	L mm	Artikelnummer Numéro d'article Part-No.	für Bolzen pour borne for stud mm	øD mm	S mm	L mm	Artikelnummer Numéro d'article Part-No.	für Bolzen pour borne for stud mm	øD mm	S mm	L mm	Artikelnummer Numéro d'article Part-No.
5	0.75	20		x50200075.10		5.5	1.1	24	x55240110.10		6	0.9	9	x60090090.10
5	0.75	22		x50220075.10		5.5	1.1	25	x55250110.10		6	0.75	10	x60100075.9
5	0.75	23		x50230075.10		5.5	1.1	26.8	x55268110.10		6	0.9	10	x60100090.10
5	0.75	23		x50230075.6		5.5	1.1	27.5	x55275110.10		6	0.75	11	x60110075.9
5	0.75	24		x50240075.10		5.5	1.1	30	x55300110.10		6	0.9	11	x60110090.10
5	0.75	24		x50240075.9		5.5	1.1	32	x55320110.10		6	1	11	x60110100.6
5	0.75	25		x50250075.10		5.5	1.1	38	x55380110.10		6	0.9	11.7	x60117090.10
5	0.75	26.5		x50265075.10		5.5	1.1	40	x55400110.10		6	0.75	12	x60120075.6
5	0.75	30		x50300075.10		5.5	1.1	85	x55850110.10		6	0.75	12	x60120075.9
5	0.75	35		x50350075.10		5.6	1	15	x56150100.4		6	0.9	12	x60120090.10
5	0.75	40		x50400075.10		6	1.45	5	x60050145.10		6	0.75	13	x60130075.9
5	0.75	43		x50430075.10	M4	4.8	0.4	6	x48060040.6		6	0.75	14	x60140075.9
5	0.75	50		x50500075.10		5	0.35	3	x50030035.6		6	0.9	14	x60140090.10
5.5	1.1	1		x55010110.10		5	0.35	30	x50300035.10		6	0.75	15	x60150075.9
5.5	1.1	1.5		x55015110.10		5	0.45	4	x50040045.6		6	0.9	15	x60150090.10
5.5	1.1	2		x55020110.10		5	0.5	4	x50040050.6		6	1	15.5	x60155100.6
5.5	1.1	2.5		x55025110.10		5	0.5	6	x50060050.10		6	0.75	16	x60160075.9
5.5	1.1	3		x55030110.10		5	0.5	10	x50100050.10		6	0.9	16	x60160090.10
5.5	1.1	3.5		x55035110.10		5	0.5	14	x50140050.10		6	0.9	17	x60170090.10
5.5	1.1	4		x55040110.10		5	0.5	26	x50260050.10		6	0.75	18	x60180075.6
5.5	1.1	4.2		x55042110.10		5	0.5	30	x50300050.9		6	0.75	18	x60180075.9
5.5	1.1	4.5		x55045110.10		6	0.75	2	x60020075.9		6	0.9	18	x60180090.10
5.5	1.1	4.6		x55046110.10		6	0.9	1.5	x60015090.10		6	0.9	19	x60190090.10
5.5	1.1	4.7		x55047110.10		6	0.9	2	x60020090.10		6	0.75	20	x60200075.9
5.5	1.1	5		x55050110.10		6	0.9	2.5	x60025090.10		6	0.9	20	x60200090.10
5.5	1.1	5.3		x55053110.10		6	0.9	2.6	x60026090.10		6	0.75	22	x60220075.9
5.5	1.1	5.5		x55055110.10		6	1	2.5	x60025100.6		6	0.9	23	x60230090.10
5.5	1.1	5.7		x55057110.10		6	0.75	3	x60030075.9		6	0.75	24	x60240075.9
5.5	1.1	6		x55060110.10		6	0.9	3	x60030090.10		6	0.9	25	x60250090.10
5.5	1.1	6.4		x55064110.10		6	1	3	x60030100.6		6	0.75	26	x60260075.9
5.5	1.1	6.5		x55065110.10		6	0.9	3.5	x60035090.10		6	0.75	28	x60280075.9
5.5	1.1	6.6		x55066110.10		6	1	3.5	x60035100.6		6	0.9	28	x60280090.10
5.5	1.1	7		x55070110.10		6	1	3.5	x60035100.9		6	0.75	30	x60300075.9
5.5	1.1	7.5		x55075110.10		6	0.75	4	x60040075.6		6	0.9	30	x60300090.10
5.5	1.1	8		x55080110.10		6	0.75	4	x60040075.9		6	0.75	32	x60320075.9
5.5	1.1	8.6		x55086110.10		6	0.9	4	x60040090.10		6	0.75	35	x60350075.9
5.5	1.1	9		x55090110.10		6	1	4	x60040100.6		6	0.9	35	x60350090.10
5.5	1.1	9.5		x55095110.10		6	0.9	4.5	x60045090.10		6	0.9	37	x60370090.10
5.5	1.1	10		x55100110.10		6	1	4.5	x60045100.6		6	0.75	38	x60380075.9
5.5	1.1	10.5		x55105110.10		6	1	4.5	x60045100.9		6	0.9	40	x60400090.10
5.5	1.1	10.7		x55107110.10		6	0.75	5	x60050075.9		6	0.75	50	x60500075.9
5.5	1.1	11		x55110110.10		6	0.9	5	x60050090.10		7	1.35	2	x70020135.10
5.5	1.1	11.5		x55115110.10		6	1	5	x60050100.6		7	1.35	2.5	x70025135.10
5.5	1.1	11.6		x55116110.10		6	0.9	5.3	x60053090.10		7	1.4	3	x70030140.10
5.5	1.1	12		x55120110.10		6	0.9	5.5	x60055090.10		7	1.35	3.5	x70035135.10
5.5	1.1	12.5		x55125110.10		6	1	5.5	x60055100.9		7	1.4	4	x70040140.10
5.5	1.1	13		x55130110.10		6	0.75	6	x60060075.9		7	1.4	5	x70050140.10
5.5	1.1	13.5		x55135110.10		6	0.9	6	x60060090.10		7	1.35	5.2	x70052135.10
5.5	1.1	14		x55140110.10		6	1	6	x60060100.6		7	1.4	6	x70060140.10
5.5	1.1	15		x55150110.10		6	0.9	6.5	x60065090.10		7	1.4	7	x70070140.10
5.5	1.1	16		x55160110.10		6	0.75	7	x60070075.9		7	1.4	7.2	x70072140.10
5.5	1.1	18		x55180110.10		6	0.9	7	x60070090.10		7	1.4	8	x70080140.10
5.5	1.1	19		x55190110.10		6	0.75	8	x60080075.9		7	1.35	8.5	x70085135.10
5.5	1.1	20		x55200110.10		6	0.9	8	x60080090.10		7	1.4	9	x70090140.10
5.5	1.1	22		x55220110.10		6	0.75	9	x60090075.9		7	1.4	10	x70100140.10

Werkstoff/Matière/ Material
 .1 = Aluminium
 .4 = Kupfer/cuivre/copper
 .6 = Messing/laiton/brass
 .9 = Stahl/acier/steel

■ = Oberflächen/Surface/Surface-plating
 Seite/page/page 5.011



für Bolzen pour borne for stud mm	øD mm	S mm	L mm	Artikelnummer Numéro d'article Part-No.	für Bolzen pour borne for stud mm	øD mm	S mm	L mm	Artikelnummer Numéro d'article Part-No.	für Bolzen pour borne for stud mm	øD mm	S mm	L mm	Artikelnummer Numéro d'article Part-No.
	7	1.35	10.2	x70102135.10		8	1.4	5	x80050140.10		8	1.4	35	x80350140.10
	7	1.4	11	x70110140.10		8	1.2	6	x80060120.9■		8	1.4	36	x80360140.10
	7	1.4	12	x70120140.10		8	1.4	6	x80060140.10		8	1.2	38	x80380120.9■
	7	1.4	13	x70130140.10		8	1.2	6.5	x80065120.9■		8	1.2	40	x80400120.9■
	7	1.4	14	x70140140.10		8	1.2	7	x80070120.9■		8	1.4	40	x80400140.10
	7	1.4	15	x70150140.10		8	1.4	7	x80070140.10		8	1.2	80	x80800120.9■
	7	1.4	16	x70160140.10		8	1.2	8	x80080120.9■	M6	7	0.5	7.5	x70075050.6■
	7	1.4	16.5	x70165140.10		8	1.4	8	x80080140.10		7	0.5	8	x70080050.6■
	7	1.4	17	x70170140.10		8	1.2	9	x80090120.9■		8	1	3	x80030100.10
	7	1.4	17.2	x70172140.10		8	1.4	9	x80090140.10		8	1	5	x80050100.9■
	7	1.4	18	x70180140.10		8	1.4	9.5	x80095140.10		8	0.5	5	x80050050.6■
	7	1.4	20	x70200140.10		8	1.2	10	x80100120.9■		8	1	6.5	x80065100.10
	7	1.4	22	x70220140.10		8	1.4	10	x80100140.10		8	0.5	8	x80080050.6■
	7	1.4	25	x70250140.10		8	1.2	12	x80120120.9■		8	1	13	x80130100.10
	7	1.4	30	x70300140.10		8	1.4	12	x80120140.10		8	1	17	x80170100.9■
	8	1.6	5	x80050160.9■		8	1.2	13	x80130120.9■		10	1.8	4	x1000401809■
M5	6	0.5	5	x60050050.10		8	1.2	14	x80140120.9■		10	1.8	5	x1000501809■
	6	0.5	12	x60120050.6■		8	1.4	14	x80140140.10		10	1.8	6	x1000601809■
	6	0.5	12.7	x60127050.6■		8	1.1	15	x80150110.9■		10	1.8	7	x1000701809■
	6	0.48	15.5	x60155048.6■		8	1.2	15	x80150120.9■		10	1.8	8	x1000801809■
	6	0.5	40	x60400050.9■		8	1.4	15	x80150140.10		10	1.8	9	x1000901809■
	6.5	0.75	3	x65030075.10		8	1.2	16	x80160120.9■		10	1.8	10	x1001001809■
	7	1	2	x70020100.10		8	1.4	16	x80160140.10		10	1.8	11	x1001101809■
	7	1	4	x70040100.10		8	1.2	17	x80170120.9■		10	1.8	12	x1001201809■
	7	1	5	x70050100.10		8	1.2	18	x80180120.9■		10	1.8	13	x1001301809■
	7	1	5	x70050100.6■		8	1.4	18	x80180140.10		10	1.8	15	x1001501809■
	7	1	9	x70090100.6■		8	1.4	19	x80190140.10		10	1.8	24	x1002401809■
	7	1	13	x70130100.6■		8	1.2	20	x80200120.9■		10	1.8	28	x1002801809■
	7	1	15	x70150100.6■		8	1.4	20	x80200140.10		10	1.8	30	x1003001809■
	7	1	16	x70160100.6■		8	1.2	21	x80210120.9■		10	1.8	35	x1003501809■
	7	1	18	x70180100.10		8	1.2	22	x80220120.9■		10	1.8	45	x1004501809■
	8	1.2	3	x80030120.9■		8	1.4	25	x80250140.10	M8	10	0.8	6	x1000600809■
	8	1.4	3	x80030140.10		8	1.2	26	x80260120.9■		12	1.8	12	x1201201809■
	8	1.4	3.5	x80035140.10		8	1.4	26.5	x80265140.10		12	1.8	14	x1201401809■
	8	1.2	4	x80040120.9■		8	1.4	28	x80280140.10	M10	12	0.7	6	x1200600709■
	8	1.4	4	x80040140.10		8	1.2	30	x80300120.9■	M12	15	0.8	6	x1500600809■
	8	1.4	4.5	x80045140.10		8	1.4	30	x80300140.10					
	8	1.2	5	x80050120.9■		8	1.2	32	x80320120.9■					

Andere Abmessungen auf Anfrage

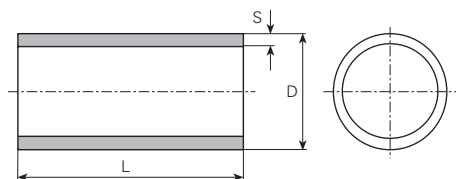
Autres dimensions sur demande

Further dimensions on request

Rohrabschnitte Pièces tubulaires cylind. Cylindrical tubular pcs

Werkstoff/Matière/Material
 .4 = Kupfer/cuivre/copper
 .6 = Messing/laiton/brass
 .8 = rostfreier Stahl/acier inox/stainless steel
 .9 = Stahl/acier/steel

■ = Oberflächen/Surface/Surface-plating
 Seite/page/page 5.011



øD mm	S mm	L mm	Artikelnummer Numéro d'article Part-No.	øD mm	S mm	L mm	Artikelnummer Numéro d'article Part-No.	øD mm	S mm	L mm	Artikelnummer Numéro d'article Part-No.		
1	0.2	5.7	x10057020.6		0.3	3	x20030030.9		0.5	51.5	x30515050.6		
1.1	0.15	2	x11020015.6		0.3	7	x20070030.6		0.7	4	x30040070.4		
1.2	0.2	3	x12030020.6		0.4	1.5	x20015040.6		0.7	8.2	x30082070.4		
	0.2	8	x12080020.6		0.4	8	x20080040.6	3.5	0.25	12	x35120025.6		
	0.2	10	x12100020.6		0.4	9	x20090040.6		0.25	14.5	x35145025.6		
1.34	0.12	3.5	x13035012.4		0.4	34	x20340040.6	3.7	0.25	4	x37040025.80		
	0.12	9.5	x13095012.4		0.5	6	x20060050.6	3.8	0.3	8	x38080030.6		
	0.12	12	x13120012.4		0.5	9	x20090050.6	4	0.25	12	x40120025.6		
1.4	0.2	4	x14040020.6		0.5	9.5	x20095050.6		0.25	16	x40160025.9		
	0.15	6	x14060015.4		0.5	12.5	x20125050.6		0.3	3	x40030030.6		
	0.2	6	x14060020.6		0.5	20	x20200050.6		0.3	8	x40080030.6		
	0.2	8	x14080020.6		0.5	48	x20480050.6		0.3	10	x40100030.6		
	0.2	10	x14100020.6					0.3	12	x40120030.6			
1.5	0.2	6	x15060020.6	2.2	0.2	5	x22050020.6	4.04	0.46	17	x40170046.4		
	0.2	7	x15070020.6		0.2	10	x22100020.6		0.54	120	x401200054		
	0.2	10	x15100020.6	2.3	0.25	33	x23330025.6		0.54	170	x401700054		
		0.25	2	x15020025.6	2.4	0.4	17	x24170040.6	4.5	0.25	8.5	x45085025.6	
		0.25	3	x15030025.6	2.5	0.2	2	x25020020.6		5	0.35	5.5	x50055035.6
		0.25	4	x15040025.6			0.2	3	x25030020.6		0.4	22	x50220040.4
		0.25	5	x15050025.6			0.2	5	x25050020.6		0.5	12	x50120050.6
		0.25	12	x15120025.6			0.2	6.5	x25065020.6		0.5	17	x50170050.4
		0.1	5	x16050010.6			0.2	8	x25080020.6		5.2	0.2	3
	1.6	0.1	22	x16220010.6			0.2	12	x25120020.6	0.2		25	x52250020.6
0.1		24	x16240010.6			0.25	3	x25030025.6	5.5	0.25	3	x55030025.6	
0.15		3	x16030015.6			0.25	3	x25030025.9		0.25	7.3	x55073025.6	
						0.25	5	x25050025.6		0.25	8	x55080025.6	
1.7	0.2	3	x17030020.4			0.25	5	x25050025.9	6	0.25	2	x60020025.6	
	0.2	4	x17040020.4		0.25	5	x25050025.9	0.25		5	x60050025.6		
	0.2	5	x17050020.6		0.25	10	x25100025.80	0.25		15	x60150025.6		
	0.2	8	x17080020.6		0.3	5	x25050030.6	6.9		1.45	4.5	x69045145.6	
	0.25	3	x17030025.4		0.4	9	x25090040.6			7.5	0.2	7	x75070020.6
1.9	0.2	1.5	x19015020.6		0.4	16	x25160040.6	8.9	0.22	8.5	x89085022.4		
	0.2	5	x19050020.6		0.4	18	x25180040.6		9.3	0.25	2.5	x93025025.6	
2	0.2	7	x20070020.6		0.4	30	x25300050.4	9.5		0.5	2	x95020050.6	
	0.25	5	x20050025.6	3	0.25	6	x30060025.6		1.25	1	x1650101256		
	0.25	15	x20150025.9		0.25	7	x30070025.6						
					0.3	10	x30100030.6						

Andere Abmessungen auf Anfrage

Autres dimensions sur demande

Further dimensions on request