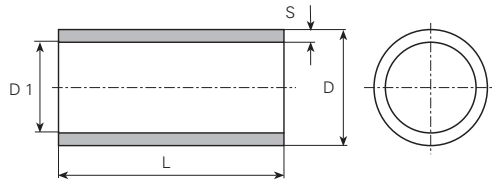


Werkstoff/Matière/Material
 .4 = Kupfer/cuivre/copper
 .6 = Messing/laiton/brass

■ = Oberflächen/Surface/Surface-plating
 Seite/page/page 5.011



øD mm	S mm	L mm	øD1 mm	Artikelnummer Numéro d'article Part-No.	øD mm	S mm	L mm	øD1 mm	Artikelnummer Numéro d'article Part-No.	øD mm	S mm	L mm	øD1 mm	Artikelnummer Numéro d'article Part-No.	
1	0.2	20	0.6	x10200020.6		0.54	4	2.96	x40040054.4	5.34	0.47	9	4.4	x53090047.4	
2.1	0.3	3.5	1.5	x21035030.4		0.54	4.5	2.96	x40045054.4	5.4	0.42	10	4.56	x54100042.4	
3	0.30	17	2.4	x30170030.4		0.54	6	2.96	x40060054.4		0.5	10.2	4.4	x54102050.4	
3.2	0.3	2.9	2.6	x32029030.4		0.54	7	2.96	x40070054.4	5.43	0.37	10.2	4.69	x54102037.4	
	0.3	12	2.6	x32120030.4		0.54	10	2.96	x40100054.4	5.5	0.25	13	5	x55130025.6	
	0.31	9.5	2.58	x32095031.4		0.54	13	2.96	x40130054.4	5.6	0.4	6.5	4.8	x56065040.4	
	0.34	7.8	2.52	x32078034.4		0.74	4.5	2.56	x40045074.4	5.89	0.64	4	4.61	x59040064.4	
	0.49	4.8	2.22	x32048049.4		0.74	5.5	2.56	x40055074.4		0.64	6	4.61	x59060064.4	
	0.49	7.8	2.22	x32078049.4		0.74	7	2.56	x40070074.4		0.64	7	4.61	x59070064.4	
	0.49	12	2.22	x32120050.4		4.2	0.29	7	3.62	x42070029.4	5.9	0.55	7	4.8	x59070055.6
	0.5	7	2.2	x32070050.4		0.47	9	3.26	x42090047.4		0.65	10	4.6	x59100065.4	
0.5	9	2.2	x32090050.4		4.25	0.3	10	3.65	x42100030.4	6	0.34	9	5.32	x60090034.4	
3.6	0.33	5.5	2.94	x36055033.4		0.32	7	3.61	x42070032.4		0.39	18	5.22	x60180039.4	
	0.33	7	2.94	x36070033.4		4.3	0.35	7.8	3.6	x43078035.4	6.1	0.45	7	5.2	x61070045.4
	0.33	9	2.94	x36090033.4			0.35	9	3.6	x43090035.4		0.45	10.5	5.2	x61105045.4
3.61	0.33	10	2.94	x36100033.4			0.35	10.5	3.6	x43105035.4		0.45	13.5	5.2	x61135045.4
	0.26	3	3.09	x36030026.4			0.46	11	3.38	x43110046.4		0.45	15	5.2	x61150045.4
	0.26	9.5	3.09	x36095026.4		4.4	0.2	9	4	x44090020.4	6.2	0.47	8	5.26	x62080047.4
3.8	0.3	5.2	3.2	x38052030.6		4.44	0.48	6.3	3.48	x44063048.6		0.52	7.6	5.16	x62076052.6
	0.3	6.3	3.2	x38063030.6		4.5	0.3	7	3.9	x45070030.6		0.56	9	5.08	x62090056.4
	0.3	8	3.2	x38080030.4			0.45	6	3.6	x45060045.4		0.56	12	5.08	x62120056.4
	0.33	8	3.14	x38080033.4			0.45	7	3.6	x45070045.4		0.62	9	4.96	x62090062.4
	0.33	9	3.14	x38090033.4			0.47	9	3.56	x45090047.4		0.65	9	4.9	x62090065.4
	0.43	11	2.94	x38110043.4			0.47	10.7	3.56	x45107047.4		0.65	11	4.9	x62110065.4
3.84	0.47	9	2.9	x38090047.4			0.5	9	3.5	x45090050.4		0.65	12	4.9	x62120065.4
3.85	0.31	7.8	3.23	x38078031.4			0.5	9	3.5	x45090050.6		0.65	11	4.9	x62110065.4
	0.31	9	3.23	x38090031.4			0.5	9	3.5	x45120050.4		0.7	9	4.8	x62090070.4
3.86	0.33	5	3.20	x38050033.4		4.59	0.5	9	3.59	x46090050.4	6.3	0.49	10.5	5.32	x63105049.4
3.88	0.28	10	3.32	x38100028.4		4.6	0.36	6.3	3.88	x46063036.6	6.32	0.56	10.5	5.2	x63105056.4
3.9	0.2	8	3.5	x39080020.4		4.7	0.38	9	3.94	x47090038.4	6.33	0.41	13.5	5.51	x63135041.4
3.92	0.29	9	3.34	x39090029.4		5	0.25	9	4.5	x50090025.6	6.35	0.45	10.15	5.45	x63101045.4
3.94	0.41	12.8	3.12	x39128041.6			0.34	10.5	4.32	x50105034.4	6.38	0.4	6	5.58	x64060040.4
4	0.35	7	3.3	x40070035.4			0.4	10.5	4.2	x50105040.4		0.4	9.5	5.58	x64095040.4
	0.35	9	3.3	x40090035.4			0.42	7	4.16	x50070042.4		0.4	12	5.58	x63120040.4
	0.37	13	3.26	x40130037.4			0.42	9	4.16	x50090042.4		0.43	12.7	5.52	x63127043.4
	0.4	6.3	3.20	x40063040.4			0.42	10	4.16	x50100042.4	6.4	0.42	12	5.56	x64120042.4
	0.55	7	2.9	x40070055.4			0.42	10	4.16	x50100042.4		0.5	8	5.4	x64080050.4
	0.7	5.5	2.6	x40055070.4			0.5	11	4	x50110050.4		0.5	9.5	5.4	x64095050.4
	0.7	7	2.6	x40070070.4		5.08	0.48	9	4.12	x51090048.4		0.5	12	5.4	x64120050.4
	4.03	0.73	10	2.57	x40100073.4		5.1	0.5	12	4.1	x51120050.4		0.5	13.5	5.4
4.04	0.34	5.5	3.36	x40055034.4		5.12	0.42	9	4.28	x51090042.4	6.45	0.47	6.3	5.51	x64063050.6
	0.34	7	3.36	x40070034.4			0.42	10	4.28	x51100042.4	6.5	0.4	6.5	5.7	x65065040.4
	0.34	10	3.36	x40100034.4			0.42	11	4.28	x51110042.4	6.54	0.41	13.5	5.72	x65135041.4
	0.36	12.8	3.32	x40128036.6		5.2	0.35	6.3	4.5	x52063035.6		0.54	4	5.46	x65040054.4
	0.46	7	3.12	x40070046.4			0.52	9	4.16	x52090052.4		0.54	6	5.46	x65060054.4
	0.46	8.2	3.12	x40082046.4		5.21	0.66	9	3.89	x52090066.4		0.54	6.5	5.46	x65065054.4
	0.46	10	3.12	x40100046.4		5.3	0.39	10.5	4.52	x53105039.4		0.54	10	5.46	x65100054.4
							0.55	9	4.2	x53090055.4		0.54	13.5	5.46	x65135054.4

Andere Abmessungen auf Anfrage

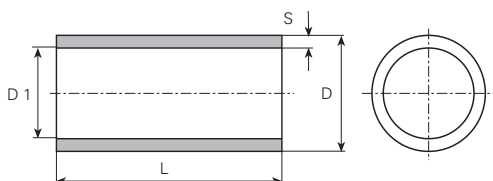
Autres dimensions sur demande

Further dimensions on request

Crimphülsen Douilles à sertir Crimping sleeves

Werkstoff/Matière/ Material
.4 = Kupfer/cuivre/copper
.6 = Messing/laiton/brass

■ = Oberflächen/Surface/Surface-plating
Seite/page/page 5.011



øD mm	S mm	L mm	øD1 mm	Artikelnummer Numéro d'article Part-No.	øD mm	S mm	L mm	øD1 mm	Artikelnummer Numéro d'article Part-No.	øD mm	S mm	L mm	øD1 mm	Artikelnummer Numéro d'article Part-No.
	0.54	16	5.46	x65160054.4 ■	8.15	0.55	12.7	7.05	x81127055.4 ■	10.65	0.63	17.5	9.39	x1061750634 ■
6.6	0.37	13.5	5.86	x66135037.6 ■	8.4	0.55	7	7.3	x84070055.6 ■		0.63	23	9.39	x1062300634 ■
6.63	0.42	13.5	5.79	x66135042.4 ■	8.5	0.4	12	7.7	x85120040.4 ■	11	0.5	25	10	x1102500504 ■
7	0.25	2.5	6.5	x70025025.4 ■	9	0.7	9	7.6	x90090070.6 ■	11.02	0.51	7	10	x1100700516 ■
7.5	0.47	9.5	6.56	x75095047.6 ■	9.35	0.7	12	7.95	x93120070.4 ■	11.05	0.5	15.3	10.05	x1101530504 ■
	0.6	9	6.3	x75090060.4 ■	9.4	0.6	12	8.2	x94120060.4 ■	11.5	0.5	9	10.5	x1150900504 ■
7.64	0.62	7	6.4	x76070062.4 ■	9.5	0.35	12	8.8	x95120035.4 ■	12.02	0.45	7.1	11.12	x1200710456 ■
	0.62	11	6.4	x76110062.4 ■		0.72	4	8.06	x95040072.4 ■		0.51	7	11	x1200700516 ■
	0.62	13.5	6.4	x76135062.4 ■	9.55	0.6	13.5	8.35	x95135060.4 ■	12.25	0.65	15.5	10.95	x1221550654 ■
7.78	0.44	12	6.9	x78120044.4 ■		0.72	13.5	8.11	x95135072.4 ■	12.3	0.45	15.5	11.4	x1231550454 ■
	0.63	12	6.52	x78120063.4 ■	9.8	0.58	13.5	8.64	x98135058.4 ■		0.5	25	11.3	x1232500504 ■
7.84	0.44	13.5	6.96	x78135044.4 ■		0.58	17	8.64	x98170058.4 ■	12.44	0.49	15.5	11.46	x1241550496 ■
7.9	0.5	12	6.9	x79120050.4 ■	10.1	0.45	13.5	9.2	x1011350454 ■	12.5	0.9	15.5	10.7	x1251550904 ■
	0.52	12	6.86	x79120052.4 ■	10.14	0.49	13.5	9.16	x1011350494 ■	12.56	0.71	15.5	11.14	x1251550714 ■
8	0.5	12	7	x80120050.4 ■	10.34	0.45	9.5	9.44	x1030950456 ■	14.5	0.67	22	13.16	x1452200674 ■

Andere Abmessungen auf Anfrage

Autres dimensions sur demande

Further dimensions on request

