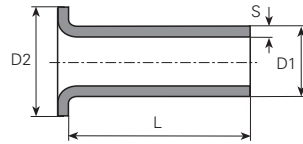


Werkstoff/Matière/Material
.1 = Aluminium
.4 = Kupfer/cuivre/copper
.6 = Messing/laiton/brass
.8 = rostfreier Stahl/acier inox/stainless steel
.9 = Stahl/acier/steel

■ = Oberflächen/Surface/Surface-plating
Seite/page/page 5.011



Form A

øD1 mm	S mm	L mm	DIN	Artikelnummer Numéro d'article Part-No.	øD1 mm	S mm	L mm	DIN	Artikelnummer Numéro d'article Part-No.	øD1 mm	S mm	L mm	DIN	Artikelnummer Numéro d'article Part-No.	
0.8	0.2	1	*	a08010020.6	0.8	0.2	3.5		a12035020.6	0.8	0.25	11	*	a15110025.4	
	0.2	1.5	*	a08015020.6		0.2	4		a12040020.6		0.25	11	*	a15110025.6	
	0.2	2	*	a08020020.6		0.2	4.5	*	a12045020.6		0.25	12	*	a15120025.6	
	0.2	2.5	*	a08025020.6		0.2	4.6	*	a12046020.4		0.2	13	*	a15130020.6	
	0.2	3	*	a08030020.6		0.2	5		a12050020.6		0.2	14	*	a15140020.6	
	0.2	3.5	*	a08035020.6		0.2	6		a12060020.6		0.25	14	*	a15140025.6	
	0.2	4	*	a08040020.4		0.2	6.2	*	a12062020.4		0.25	17	*	a15170025.6	
	0.2	4	*	a08040020.6		0.2	6.5	*	a12065020.6		0.25	20	*	a15200025.6	
	0.2	4.5	*	a08045020.6		0.2	7		a12070020.6		0.25	26.5	*	a15265025.4	
	0.2	5	*	a08050020.6		0.2	10		a12100020.6		0.25	30	*	a15300025.6	
	0.2	6	*	a08060020.6		0.2	11	*	a12110020.4		0.25	44	*	a15440025.6	
	0.2	7	*	a08070020.6		0.2	12		a12120020.4		0.25	47	*	a15470025.6	
	0.2	8	*	a08080020.6		0.2	14.5	*	a12145020.6		1.6	0.15	2.5	*	a16025015.6
	0.2	9	*	a08090020.6		0.2	15		a12150020.6			0.2	2.5	*	a16025020.6
	0.2	10	*	a08100020.6		0.2	18		a12180020.6			0.2	4	*	a16040020.6
	1	0.2	1	*		a10010020.6	1.3	0.2	2.5		*	a13025020.6	1.7	0.2	1.6
0.15		1.5	*	a10015015.6	0.2	6		*	a13060020.6	0.2	3	*		a17030020.6	
0.2		1.5	*	a10015020.6	1.4	0.2	2	*	a14020020.6	0.2	4	*		a17040020.6	
0.2		2	*	a10020020.6		0.2	4.5	*	a14045020.6	2	0.2	1.5	*	a20015020.6	
0.15		2.2	*	a10022015.4	1.5	0.25	2		a15020025.6		0.25	1.5	*	a20015025.4	
0.2		2.5	*	a10025020.6		0.2	2.2	*	a15022020.4		0.2	1.8	*	a20018020.6	
0.2		3	*	a10030020.6		0.2	2.5		a15025020.4		0.2	2	*	a20020020.6	
0.2		3.5	*	a10035020.6		0.25	2.5		a15025025.4		0.25	2	*	a20020025.6	
0.2		4	*	a10040020.6		0.25	2.5		a15025025.6		0.3	2	*	a20020030.6	
0.2		4.5	*	a10045020.6		0.2	3		a15030020.4		0.3	2.5	*	a20025030.6	
0.2		5	*	a10050020.6		0.2	3		a15030020.6		0.25	3	*	a20030025.6	
0.2		5.5	*	a10055020.6		0.25	3.2		a15032025.4		0.3	3	*	a20030030.6	
0.2		6	*	a10060020.6		0.2	3.5		a15035020.4		0.25	3.5	*	a20035025.6	
0.2		7	*	a10070020.6		0.2	3.5		a15035020.6		0.3	3.5	*	a20035030.6	
0.2		7.8	*	a10078020.6		0.2	4		a15040020.6		0.25	4	*	a20040025.6	
0.2		8	*	a10080020.6		0.25	4		a15040025.6		0.3	4	*	a20040030.4	
0.2	10	*	a10100020.6	0.2		4.5	*	a15045020.6	0.3	4	*	a20040030.6			
0.2	12	*	a10120020.6	0.2	5		a15050020.6	0.3	4.5	*	a20045030.6				
0.2	13	*	a10130020.6	0.2	5.5	*	a15055020.6	0.3	5	*	a20050030.4				
1.2	0.2	1.5	*	a12015020.4	0.2	6		a15060020.6	0.3	5	*	a20050030.6			
	0.2	2	*	a12020020.4	0.25	6		a15060025.6	0.25	5.5	*	a20055025.6			
	0.2	2	*	a12020020.6	0.2	7		a15070020.6	0.3	6	*	a20060030.6			
	0.2	2.5	*	a12025020.6	0.25	7.5	*	a15075025.4	0.3	6.5	*	a20065030.6			
	0.2	2.8	*	a12028020.4	0.2	8		a15080020.6	0.3	7	*	a20070030.6			
	0.2	3	*	a12030020.6	0.2	10		a15100020.6	0.4	7	*	a20070040.6			

Andere Abmessungen auf Anfrage

Autres dimensions sur demande

Futher dimensions on request

Form A

aD1 mm	S mm	L mm	DIN	Artikelnummer Numéro d'article Part-No.	aD1 mm	S mm	L mm	DIN	Artikelnummer Numéro d'article Part-No.	aD1 mm	S mm	L mm	DIN	Artikelnummer Numéro d'article Part-No.	
	0.25	7.5	*	a20075025.6		0.3	8.5	*	a25085030.6		0.5	10		a30100050.6	
	0.3	8		a20080030.6		0.25	9	*	a25090025.6		0.3	11	*	a30110030.6	
	0.4	8	*	a20080040.6		0.3	9	*	a25090030.6		0.3	12		a30120030.6	
	0.3	9	*	a20090030.6		0.4	9	*	a25090040.6		0.3	12		a30120030.9	
	0.4	9	*	a20090040.6		0.3	9.5	*	a25095030.6		0.3	12.4		a30124030.6	
	0.3	9.5	*	a20095030.6		0.25	10		a25100025.6		0.3	13	*	a30130030.6	
	0.3	10		a20100030.6		0.3	10		a25100030.6		0.3	14	*	a30140030.6	
	0.5	10.5		a20105050.6		0.4	10		a25100040.6		0.3	15		a30150030.6	
	0.3	11	*	a20110030.6		0.25	11	*	a25110025.6		0.3	16	*	a30160030.6	
	0.2	12		a20120020.6		0.3	11	*	a25110030.6		0.25	16.2		a30162025.6	
	0.25	12	*	a20120025.6		0.3	11.5	*	a25115030.6		0.25	16.5	*	a30165025.6	
	0.3	12		a20120030.6		0.3	12		a25120030.6		0.3	17	*	a30170030.6	
	0.4	12	*	a20120040.6		0.3	12		a25120030.6		0.3	17	*	a30170030.6	
	0.5	12.5		a20125050.6		0.3	15		a25150030.6		0.3	19	*	a30190030.6	
	0.25	13	*	a20130025.6		0.3	16	*	a25160030.6		0.3	20		a30200030.6	
	0.3	14	*	a20140030.6		0.25	18		a25180025.6		0.25	21.5		a30215025.6	
	0.3	15		a20150030.6		0.3	20		a25200030.6		0.3	22	*	a30220030.6	
	0.25	16	*	a20160025.6		0.3	25		a25250030.6		0.3	23	*	a30230030.6	
	0.3	16	*	a20160030.6		0.3	27	*	a25270030.6		0.3	23.7	*	a30237030.6	
	0.3	18		a20180030.6		0.4	30		a25300040.6		0.3	24	*	a30240030.6	
	0.4	20	*	a20200040.6		0.3	38.5	*	a25385030.6		0.4	25.8		a30258040.6	
	0.3	21	*	a20210030.6		0.3	43	*	a25430030.6		0.3	29	*	a30290030.6	
	0.2	22		a20220020.6		0.3	46.5		a25465030.6		0.3	31	*	a30310030.6	
	0.25	23	*	a20230025.6		2.6	0.2	4	*	a26040020.6		0.3	35		a30350030.6
	0.3	25		a20250030.6		2.8	0.3	3.5	*	a28035030.6		0.4	52.5		a30525040.6
	0.3	30		a20300030.6			0.3	4.5	*	a28045030.6	3.2	0.2	18	*	a32180020.6
	0.25	32	*	a20320025.6			0.3	15.5	*	a28155030.6		0.2	18.5	*	a32185020.6
	0.2	40		a20400020.6	3	0.25	2.5	*	a30025025.6	3.5	0.3	4	*	a35040030.6	
	0.3	50	*	a20500030.6		0.3	3		a30030030.6		0.3	5	*	a35050030.6	
2.2	0.15	2.5	*	a22025015.6		0.25	3.5		a30035025.6		0.3	6	*	a35060030.6	
	0.25	2.5	*	a22025025.6		0.3	3.5		a30035030.6		0.3	8	*	a35080030.6	
	0.25	4	*	a22040025.6		0.5	3.5		a30035050.6		0.3	115	*	a351150030.6	
	0.25	5	*	a22050025.6		0.25	3.8		a30038025.6		0.3	13	*	a35130030.6	
	0.25	17	*	a22170025.6		0.25	4		a30040025.6		0.3	16	*	a35160030.6	
2.4	0.25	5.5	*	a24055025.6		0.3	4		a30040030.6		0.3	18	*	a35180030.6	
	0.25	15	*	a24150025.6		0.25	4.2		a30042025.6		0.3	18.5	*	a35185030.6	
2.5	0.3	2.5	*	a25025030.6		0.3	4.5	*	a30045030.6		0.3	40	*	a35400030.6	
	0.3	3		a25030030.6		0.25	5		a30050025.6	3.8	0.3	10.2	*	a38102030.6	
	0.25	3.5		a25035025.6		0.3	5		a30050030.6		0.3	14.2	*	a38142030.6	
	0.3	3.5		a25035030.6		0.4	5	*	a30050040.6	4	0.2	1.7	*	a40017020.6	
	0.3	4		a25040030.6		0.5	5		a30050050.6		0.2	2	*	a40020020.6	
	0.3	4.5	*	a25045030.10		0.3	5.5	*	a30055030.6		0.2	2.3	*	a40023020.6	
	0.3	4.5	*	a25045030.6		0.3	6		a30060030.6		0.3	3		a40030030.6	
	0.25	5		a25050025.6		0.4	6	*	a30060040.6		0.3	3.5	*	a40035030.6	
	0.3	5		a25050030.6		0.3	6.5	*	a30065030.6		0.2	4	*	a40040020.6	
	0.4	5		a25050040.6		0.3	7		a30070030.6		0.4	4		a40040040.6	
	0.25	5.5	*	a25055025.6		0.4	7	*	a30070040.6		0.4	5		a40050040.6	
	0.3	5.5	*	a25055030.6		0.3	7.5	*	a30075030.4		0.4	5.5	*	a40055040.6	
	0.3	6		a25060030.6		0.3	7.5	*	a30075030.6		0.4	6		a40060040.6	
	0.3	6.5	*	a25065030.6		0.3	8		a30080030.6		0.4	7		a40070040.6	
	0.3	7		a25070030.6		0.3	8.5	*	a30085030.6		0.3	7.5	*	a40075030.6	
	0.4	7		a25070040.6		0.3	8.8	*	a30088030.4		0.3	8		a40080030.6	
	0.25	7.5	*	a25075025.6		0.3	9	*	a30090030.6		0.4	8		a40080040.6	
	0.3	8		a25080030.6		0.25	10		a30100025.6		0.2	9		a40090020.6	
	0.4	8		a25080040.6		0.3	10		a30100030.6		0.4	9.6	*	a40096040.6	
						0.3	10		a30100030.9		0.25	10	*	a40100025.6	

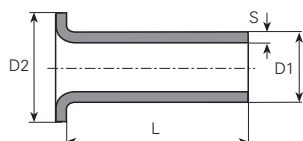
Andere Abmessungen auf Anfrage

Autres dimensions sur demande

Further dimensions on request

Werkstoff/Matière/Material
 .1 = Aluminium
 .4 = Kupfer/cuivre/copper
 .6 = Messing/laiton/brass
 .8 = rostfreier Stahl/acier inox/stainless steel
 .9 = Stahl/acier/steel

■ = Oberflächen/Surface/Surface-plating
 Seite/page/page 5.011


Form A

øD1 mm	S mm	L mm	DIN	Artikelnummer Numéro d'article Part-No.	øD1 mm	S mm	L mm	DIN	Artikelnummer Numéro d'article Part-No.	øD1 mm	S mm	L mm	DIN	Artikelnummer Numéro d'article Part-No.
	0.3	10		a40100030.6■		0.25	4.3	*	a50043025.6■		0.5	10		a60100050.6■
	0.4	10		a40100040.6■		0.5	4.5	*	a50045050.6■		0.5	10		a60100050.9■
	0.4	10.5		a40105040.6■		0.5	5		a50050050.6■		0.5	12.5		a60125050.6■
	0.2	11	*	a40110020.6■		0.5	6.5	*	a50065050.6■		0.25	14	*	a60140025.6■
	0.3	11	*	a40110030.6■		0.5	7		a50070050.6■		0.5	15	*	a60150050.6■
	0.4	12		a40120040.6■		0.5	8		a50080050.6■		0.5	16.5		a60165050.6■
	0.55	12.7		a40127055.10		0.25	10	*	a50100025.6■		0.5	19		a60190050.6■
	0.4	13	*	a40130040.6■		0.5	10		a50100050.6■		0.5	25		a60250050.6■
	0.4	14	*	a40140040.6■		0.5	10		a50100050.9■		0.5	30		a60300050.6■
	0.3	15		a40150030.6■		0.25	11	*	a50110025.6■		0.5	35		a60350050.6■
	0.3	17	*	a40170030.6■		0.5	12		a50120050.6■		0.5	40		a60400050.6■
	0.3	22		a40220030.6■		0.25	13	*	a50130025.6■		0.5	43	*	a60430050.6■
	0.4	25		a40250040.6■		0.5	20		a50200050.4■		0.5	53		a60530050.80
	0.4	28		a40280040.6■		0.35	21		a50210035.6■	7	0.5	9	*	a70090050.6■
						0.35	23	*	a50230035.6■		0.5	15	*	a70150050.6■
						0.5	25		a50250050.6■	7.5	0.25	5	*	a75050025.6■
4.8	0.3	2.7	*	a48027030.6■	6	0.25	3	*	a60030025.6■	8	0.5	10		a80100050.6■
	0.4	4	*	a48040040.6■		0.25	4	*	a60040025.6■		0.5	15.5	*	a80155050.6■
	0.4	6	*	a48060040.6■		0.25	6	*	a60060025.6■	9	0.3	8	*	a90080030.6■
5	0.25	2.6	*	a50026025.6■		0.5	8	*	a60080050.6■		0.3	10	*	a90100030.6■
	0.25	3	*	a50030025.6■		0.3	9	*	a60090030.6■	10	0.5	3		a1000300506■
	0.25	4	*	a50040025.6■		0.25	10		a60100025.6■					
	0.5	4		a50040050.6■										
	0.25	4.2	*	a50042025.6■										

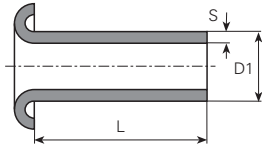
Andere Abmessungen auf Anfrage

Autres dimensions sur demande

Further dimensions on request

Werkstoff/Matière/ Material
 .1 = Aluminium
 .4 = Kupfer/cuivre/copper
 .6 = Messing/laiton/brass
 .8 = rostfreier Stahl/acier inox/stainless steel
 .9 = Stahl/acier/steel

■ = Oberflächen/Surface/Surface-plating
 Seite/page/page 5.011



Form B

øD1 mm	S mm	L mm	DIN	Artikelnummer Numéro d'article Part-No.	øD1 mm	S mm	L mm	DIN	Artikelnummer Numéro d'article Part-No.	øD1 mm	S mm	L mm	DIN	Artikelnummer Numéro d'article Part-No.
1	0.2	1.5	*	b10015020.6	1	0.2	7.5	*	b15075020.6	2	0.3	9	*	b20090030.6
	0.15	2	*	b10020015.4		0.2	8	*	b15080020.6		0.4	9	*	b20090040.6
	0.2	2	*	b10020020.6		0.25	9	*	b15090025.6		0.3	9.5	*	b20095030.6
	0.2	3	*	b10030020.6		0.2	10	*	b15100020.6		0.2	10	*	b20100020.6
	0.2	3.5	*	b10035020.6		0.25	10	*	b15100025.6		0.3	10	*	b20100030.6
	0.2	5	*	b10050020.6		0.2	11	*	b15110020.6		0.3	12	*	b20120030.6
	0.2	9	*	b10090020.6		0.2	12	*	b15120020.6		0.25	13	*	b20130025.6
	0.2	9.5	*	b10095020.6		0.25	13	*	b15130025.6		0.3	13	*	b20130030.6
	0.2	10	*	b10100020.6		0.2	15	*	b15150020.6		0.25	14	*	b20140025.6
	0.2	18	*	b10180020.6		0.25	16	*	b15160025.6		0.3	15	*	b20150030.6
						0.25	24	*	b15240025.6		0.3	23	*	b20230030.6
1.2	0.2	1.5	*	b12015020.6	1.7	0.2	2.3	*	b17023020.6	2.2	0.25	2.5	*	b22025025.6
	0.2	1.6	*	b12016020.4		0.2	2.8	*	b17028020.4		0.25	3	*	b22030025.6
	0.2	2	*	b12020020.4		0.2	3	*	b17030020.6		0.25	3.5	*	b22035025.6
	0.2	2	*	b12020020.6		0.2	7	*	b17070020.6		0.25	4	*	b22040025.6
	0.2	2.5	*	b12025020.6		0.2	8	*	b17080020.6		0.25	4.5	*	b22045025.6
	0.2	3	*	b12030020.6		0.2	9	*	b17090020.6		0.25	5	*	b22050025.6
	0.2	3.5	*	b12035020.6	0.2	11	*	b17110020.6	0.25		5.5	*	b22055025.6	
	0.2	4	*	b12040020.6	2	0.2	2	*	b20020020.6		0.25	6	*	b22060025.6
	0.2	5	*	b12050020.6		0.25	2	*	b20020025.6		0.25	6.5	*	b22065025.6
	0.2	5.5	*	b12055020.6		0.25	2.5	*	b20025025.6		0.25	7	*	b22070025.6
	0.2	8	*	b12080020.6		0.2	3	*	b20030020.6		0.25	8	*	b22080025.6
0.2	9	*	b12090020.6	0.25		3	*	b20030025.6	0.25	8.5	*	b22085025.6		
0.2	10	*	b12100020.6	0.3	3	*	b20030030.6	0.25	9	*	b22090025.6			
0.2	12	*	b12120020.6	0.2	3.5	*	b20035020.6	0.25	9.5	*	b22095025.6			
1.4	0.2	1.2	*	b14012020.6	0.25	3.5	*	b20035025.6	0.25	10	*	b22100025.6		
	0.2	3	*	b14030020.6	0.3	3.5	*	b20035030.6	0.25	16.5	*	b22165025.6		
1.5	0.2	1.5	*	b15015020.6	0.35	3.5	*	b20035035.6	0.25	17	*	b22170025.6		
	0.25	1.7	*	b15017025.6	0.3	3.8	*	b20038030.6	2.3	0.25	3.5	*	b23035025.6	
	0.2	2	*	b15020020.6	0.25	4	*	b20040025.6		0.25	5	*	b23050025.6	
	0.2	2.5	*	b15025020.6	0.3	4	*	b20040030.6		0.25	10	*	b23100025.6	
	0.25	2.5	*	b15025025.6	0.25	4.5	*	b20045025.6	2.4	0.25	2.5	*	b24025025.6	
	0.2	3	*	b15030020.4	0.3	4.5	*	b20045030.6		0.3	4.5	*	b24045030.6	
	0.2	3	*	b15030020.6	0.25	5	*	b20050025.6		0.25	6.5	*	b24065025.6	
	0.25	3	*	b15030025.6	0.3	5	*	b20050030.6		0.25	7	*	b24070025.6	
	0.2	3.5	*	b15035020.6	0.25	5.5	*	b20055025.6		0.25	9	*	b24090025.6	
	0.25	3.5	*	b15035025.4	0.25	6	*	b20060025.6		0.25	10	*	b24100025.6	
	0.25	3.5	*	b15035025.6	0.3	6	*	b20060030.6		0.25	10	*	b24100025.80	
	0.2	4	*	b15040020.6	0.3	6.5	*	b20065030.6		0.25	15	*	b24150025.6	
	0.2	4.5	*	b15045020.6	0.25	7	*	b20070025.6		0.3	15	*	b24150030.6	
	0.2	5	*	b15050020.6	0.3	7	*	b20070030.6		0.3	20	*	b24200030.6	
	0.2	5.5	*	b15055020.6	0.4	7	*	b20070040.6	2.5	0.25	2.5	*	b25025025.6	
	0.25	5.8	*	b15058025.6	0.3	8	*	b20080030.6		0.3	2.5	*	b25025030.6	
	0.2	6.5	*	b15065020.6	0.4	8	*	b20080040.6		0.25	3	*	b25030025.6	
0.2	7	*	b15070020.6	0.4	8	*	b20080040.6	0.25		3.5	*	b25035025.6		
0.25	7	*	b15070025.6	0.25	9	*	b20090025.6							

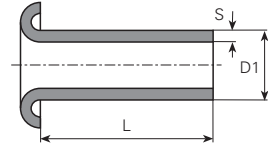
Andere Abmessungen auf Anfrage

Autres dimensions sur demande

Further dimensions on request

Werkstoff/Matière/Material
.1 = Aluminium
.4 = Kupfer/cuivre/copper
.6 = Messing/laiton/brass
.8 = rostfreier Stahl/acier inox/stainless steel
.9 = Stahl/acier/steel

■ = Oberflächen/Surface/Surface-plating
Seite/page/page 5.011



Form B

øD1 mm	S mm	L mm	DIN	Artikelnummer Numéro d'article Part-No.	øD1 mm	S mm	L mm	DIN	Artikelnummer Numéro d'article Part-No.	øD1 mm	S mm	L mm	DIN	Artikelnummer Numéro d'article Part-No.
	0.25	3.5		b25035025.6		0.2	3	*	b26030020.6		0.25	10		b30100025.6
	0.3	3.5		b25035030.6		0.25	4	*	b26040025.6		0.3	10		b30100030.6
	0.25	4		b25040025.6		0.2	4.5	*	b26045020.6		0.5	10		b30100050.6
	0.3	4		b25040030.6		0.2	5	*	b26050020.6		0.3	11	*	b30110030.6
	0.25	4.5	*	b25045025.6		0.2	5.5	*	b26055020.6		0.3	12		b30120030.6
	0.3	4.5	*	b25045030.6		0.2	6	*	b26060020.6		0.3	13	*	b30130030.6
	0.25	5		b25050025.6		0.2	7	*	b26070020.6		0.3	14	*	b30140030.6
	0.3	5.5	*	b25055030.6		0.4	7	*	b26070040.6		0.25	14.5	*	b30145025.6
	0.25	6		b25060025.6		0.2	7.3	*	b26073020.6		0.3	15		b30150030.6
	0.3	6		b25060030.6		0.2	8	*	b26080020.6		0.2	16		b30160020.6
	0.25	6.5	*	b25065025.6		0.2	9.5	*	b26095020.6		0.3	16	*	b30160030.6
	0.3	6.5	*	b25065030.6		0.2	13.2	*	b26132020.6		0.3	17	*	b30170030.6
	0.25	7		b25070025.6	2.8	0.3	6	*	b28060030.6		0.3	18		b30180030.6
	0.3	7		b25070030.6	3	0.25	2	*	b30020025.6		0.5	18		b30180050.6
	0.4	7		b25070040.6		0.3	2.5	*	b30025030.6		0.3	19	*	b30190030.6
	0.25	7.5	*	b25075025.6		0.25	3		b30030025.6		0.3	20		b30200030.6
	0.25	8		b25080025.6		0.3	3		b30030030.6		0.5	20.5		b30205050.80
	0.3	8		b25080030.6		0.25	3.5		b30035025.6		0.3	22		b30220030.6
	0.4	8		b25080040.6		0.3	3.5		b30035030.6		0.2	22.3	*	b30223020.6
	0.3	8.5	*	b25085030.6		0.3	4		b30040030.6		0.3	25		b30250030.6
	0.15	9	*	b25090015.6		0.25	4.5	*	b30045025.6		0.5	25		b30250050.6
	0.25	9	*	b25090025.6		0.5	4.5	*	b30045050.6		0.2	26	*	b30260020.6
	0.3	9	*	b25090030.6		0.25	5		b30050025.6		0.3	26	*	b30260030.6
	0.3	9.5	*	b25095030.6		0.3	5		b30050030.6		0.3	30		b30300030.6
	0.4	9.5	*	b25095040.10		0.4	5	*	b30050040.6		0.5	35		b30350050.6
	0.4	9.5	*	b25095040.6		0.5	5		b30050050.6		0.3	40		b30400030.6
	0.15	10	*	b25100015.6		0.3	5.5	*	b30055030.6	3.2	0.2	5	*	b32050020.6
	0.25	10		b25100025.6		0.25	6		b30060025.6		0.3	6	*	b32060030.6
	0.3	10		b25100030.6		0.3	6		b30060030.6		0.2	7	*	b32070020.6
	0.4	10		b25100040.6		0.5	6		b30060050.6		0.2	8	*	b32080020.6
	0.25	12		b25120025.6		0.2	6.5	*	b30065020.6		0.2	11	*	b32110020.6
	0.25	13	*	b25130025.6		0.25	6.5		b30065025.6		0.2	13	*	b32130020.6
	0.3	14	*	b25140030.6		0.3	6.5	*	b30065030.6		0.2	24.2	*	b32242020.6
	0.4	14	*	b25140040.6		0.2	7	*	b30070020.6	3.5	0.3	3	*	b35030030.6
	0.25	15		b25150025.6		0.25	7		b30070025.6		0.3	3.5	*	b35035030.6
	0.25	17	*	b25170025.6		0.3	7		b30070030.10		0.25	4	*	b35040025.6
	0.3	17	*	b25170030.6		0.3	7		b30070030.6		0.3	4	*	b35040030.6
	0.25	18		b25180025.6		0.3	7.5	*	b30075030.6		0.3	4.5	*	b35045030.6
	0.4	18		b25180040.6		0.25	8		b30080025.6		0.3	5	*	b35050030.6
	0.3	20		b25200030.6		0.3	8		b30080030.6		0.3	5.5	*	b35055030.6
	0.3	22		b25220030.6		0.3	8.5	*	b30085030.6		0.3	6	*	b35060030.6
	0.3	23	*	b25230030.6		0.25	9	*	b30090025.6		0.3	7	*	b35070030.6
	0.3	26	*	b25260030.6		0.3	9	*	b30090030.6		0.3	8	*	b35080030.6
	0.3	33	*	b25330030.6		0.25	9.5	*	b30095025.6		0.3	9	*	b35090030.6
2.6	0.2	2.6	*	b26026020.6		0.2	10		b30100020.6		0.3	10	*	b35100030.6

Andere Abmessungen auf Anfrage

Autres dimensions sur demande

Futher dimensions on request

Form B

øD1 mm	S mm	L mm	DIN	Artikelnummer Numéro d'article Part-No.	øD1 mm	S mm	L mm	DIN	Artikelnummer Numéro d'article Part-No.	øD1 mm	S mm	L mm	DIN	Artikelnummer Numéro d'article Part-No.	
	0.3	11	*	b35110030.6		0.4	19	*	b40190040.6		0.35	12	*	b50120035.6	
	0.3	15	*	b35150030.6		0.4	20	*	b40200040.6		0.5	12	*	b50120050.6	
4	0.3	3	*	b40030030.6		0.8	20	*	b40200080.80		0.25	14	*	b50140025.6	
	0.4	3	*	b40030040.6		0.4	22	*	b40220040.6		0.5	15	*	b50150050.6	
	0.3	3.5	*	b40035030.6		0.4	23	*	b40230040.6		0.5	16	*	b50160050.6	
	0.3	4	*	b40040030.6		0.5	25	*	b40250050.6		0.35	16.6	*	b50166035.6	
	0.3	4.5	*	b40045030.6		0.5	26.5	*	b40265050.6		0.5	17	*	b50170050.6	
	0.3	5	*	b40050030.6		0.4	30	*	b40300040.6		0.5	19	*	b50190050.6	
	0.3	5.5	*	b40055030.6		0.5	30	*	b40300050.6		0.75	20	*	b50200075.6	
	0.3	6	*	b40060030.6		0.4	30.5	*	b40305040.6		0.75	23.5	*	b50235075.80	
	0.4	6	*	b40060040.6		0.3	38	*	b40380030.6		0.75	24	*	b50240075.80	
	0.3	6.2	*	b40062030.6		0.4	38	*	b40380040.6		0.5	40	*	b50400050.6	
	0.3	6.5	*	b40065030.6		0.4	40	*	b40400040.6		5.5	0.5	30.5	*	b55305050.6
	0.3	7	*	b40070030.6		0.4	42	*	b40420040.6		6	0.25	4	*	b60040025.6
	0.3	8	*	b40080030.6		0.5	42.5	*	b40425050.6			0.25	5	*	b60050025.6
	0.4	8	*	b40080040.6		0.5	48.5	*	b40485050.6			0.3	5	*	b60050030.6
	0.3	9	*	b40090030.6		0.5	50	*	b40500050.6			0.5	5	*	b60050050.6
	0.4	9	*	b40090040.6		0.5	60	*	b40600050.6			0.25	6	*	b60060025.6
	0.5	100	*	b4010000506		4.5	0.3	3	*	b45030030.6		0.5	6	*	b60060050.4
	0.3	10	*	b40100030.6			0.25	4	*	b45040025.6		0.5	6	*	b60060050.6
	0.4	10	*	b40100040.6			0.3	10	*	b45100030.6		0.75	7	*	b60070075.4
	0.75	10	*	b40100075.10		0.25	12	*	b45120025.6	0.25		8	*	b60080025.6	
	0.4	10.5	*	b40105040.6		4.8	0.4	8	*	b48080040.6		0.25	9	*	b60090025.6
	0.4	11	*	b40110040.6			5	0.5	4	*		b50040050.6	0.5	12.5	*
	0.4	12	*	b40120040.6		0.5		4.5	*	b50045050.6		0.25	14	*	b60140025.6
	0.3	13	*	b40130030.6		0.25		5	*	b50050025.6	0.5	15	*	b60150050.6	
0.4	13	*	b40130040.6		0.5	5		*	b50050050.6	0.5	20	*	b60200050.6		
0.5	13.8	*	b40138050.9		0.25	7		*	b50070025.6	0.5	30	*	b60300050.6		
0.3	14	*	b40140030.6		0.25	8		*	b50080025.6	7.5	0.5	6	*	b75060050.4	
0.4	14	*	b40140040.6		0.5	8		*	b50080050.6		8	0.5	6	*	b80060050.6
0.4	16	*	b40160040.6		0.5	8.4		*	b50084050.6	0.5		8	*	b80080050.10	
0.8	16	*	b40160080.80		0.25	10		*	b50100025.6	0.5		10	*	b80100050.6	
0.2	18	*	b40180020.6		0.5	10		*	b50100050.6						

Andere Abmessungen auf Anfrage

Autres dimensions sur demande

Futher dimensions on request

Werkstoff/Matière/Material
.4 = Kupfer/cuivre/copper
.8 = rostfreier Stahl/acier inox/stainless steel

■ = Oberflächen/Surface/Surface-plating
Seite/page/page 5.011



Form C

øD1 mm	S mm	L mm	DIN	Artikelnummer Numéro d'article Part-No.	øD1 mm	S mm	L mm	DIN	Artikelnummer Numéro d'article Part-No.	øD1 mm	S mm	L mm	DIN	Artikelnummer Numéro d'article Part-No.
1	0.2	6.3	*	c10063020.4	1.7	0.2	4	*	c17040020.4	4.5	0.5	9	*	c45090050.80

Andere Abmessungen auf Anfrage

Autres dimensions sur demande

Futher dimensions on request